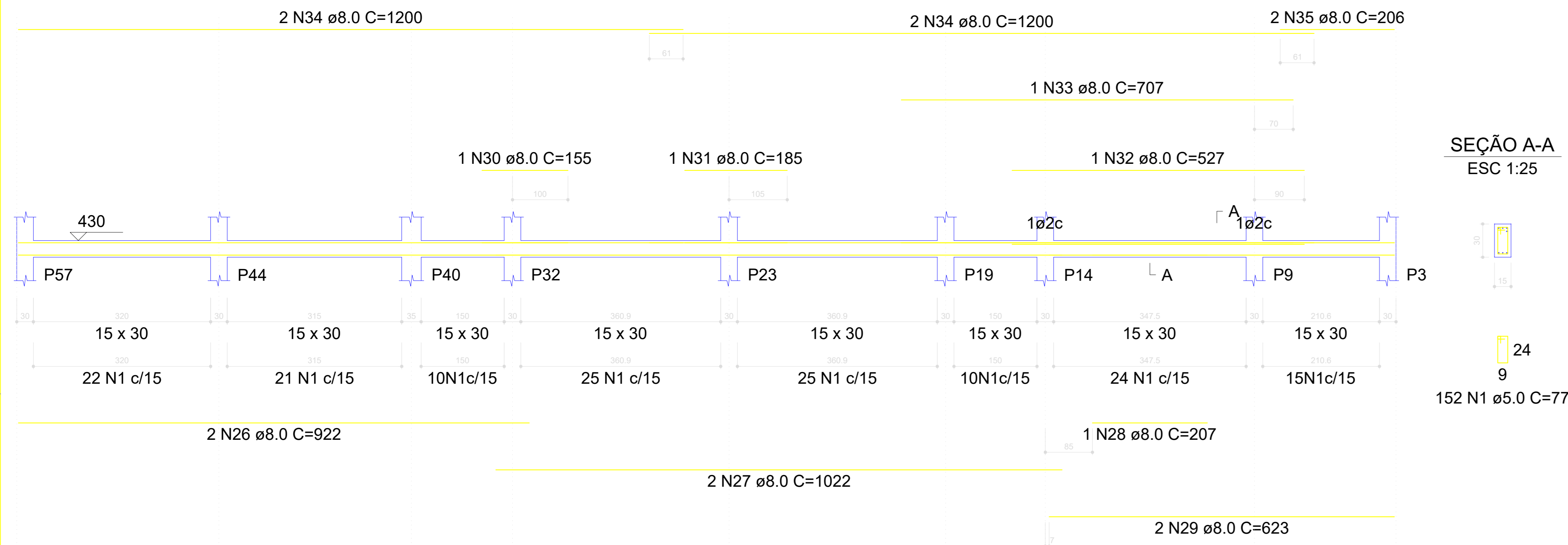
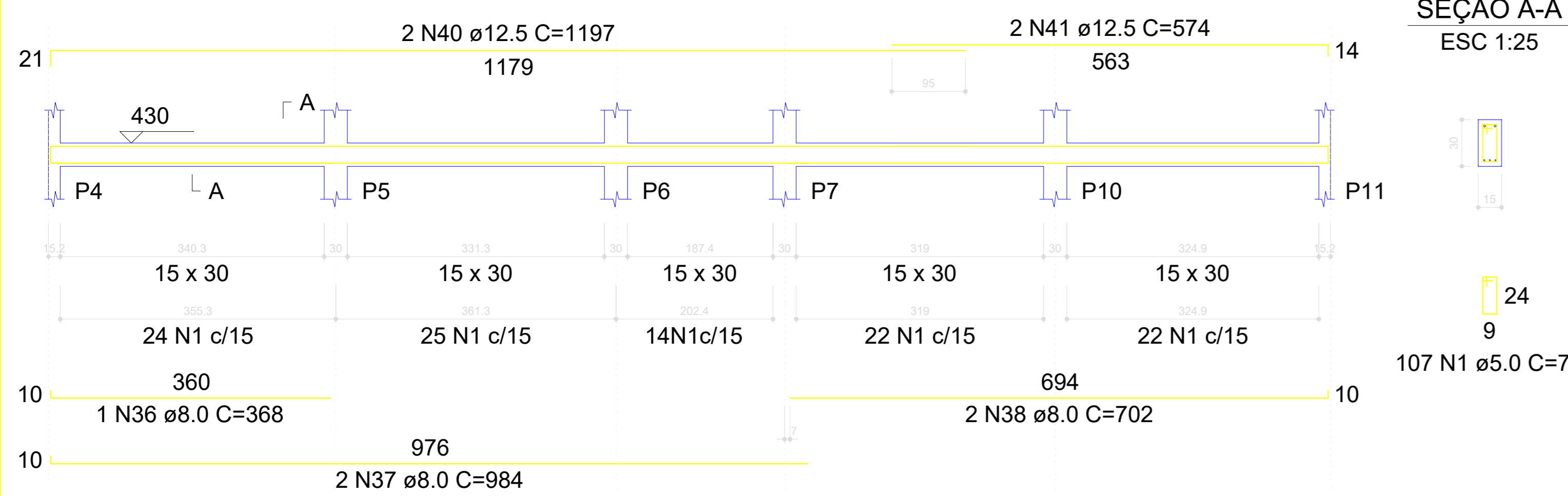


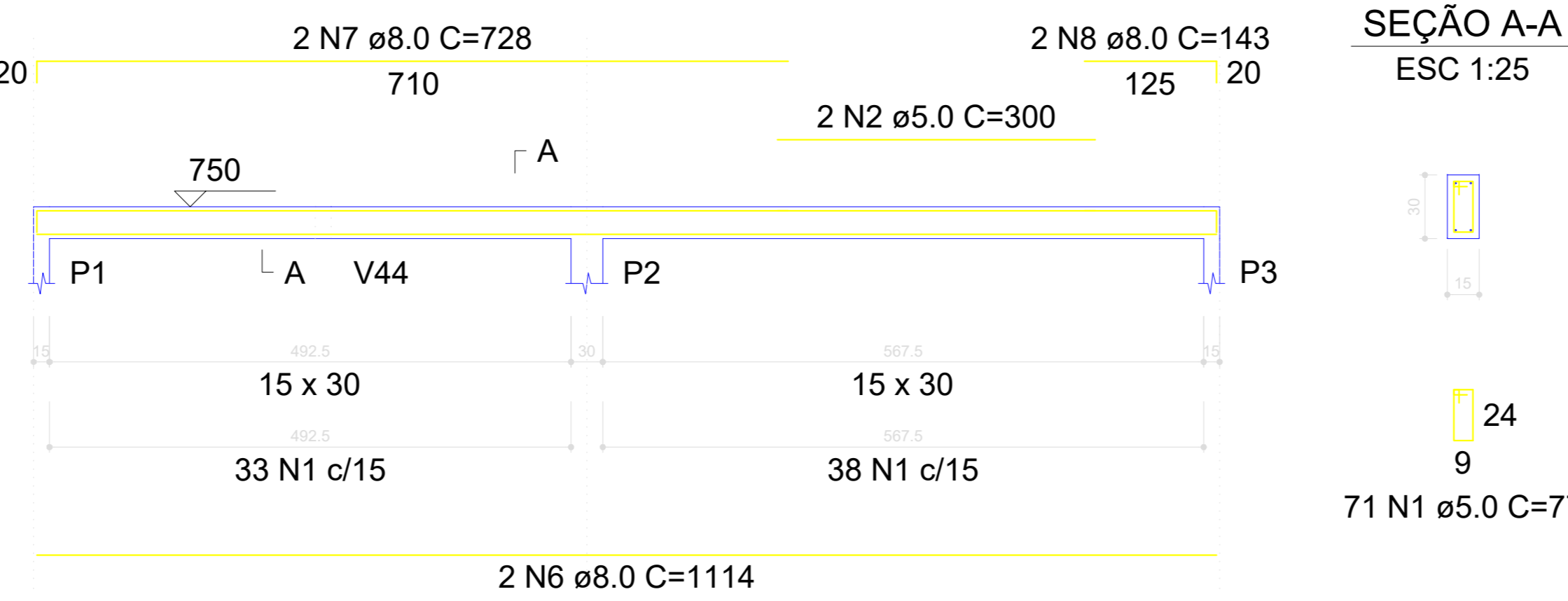
**V49**  
ESC 1:50



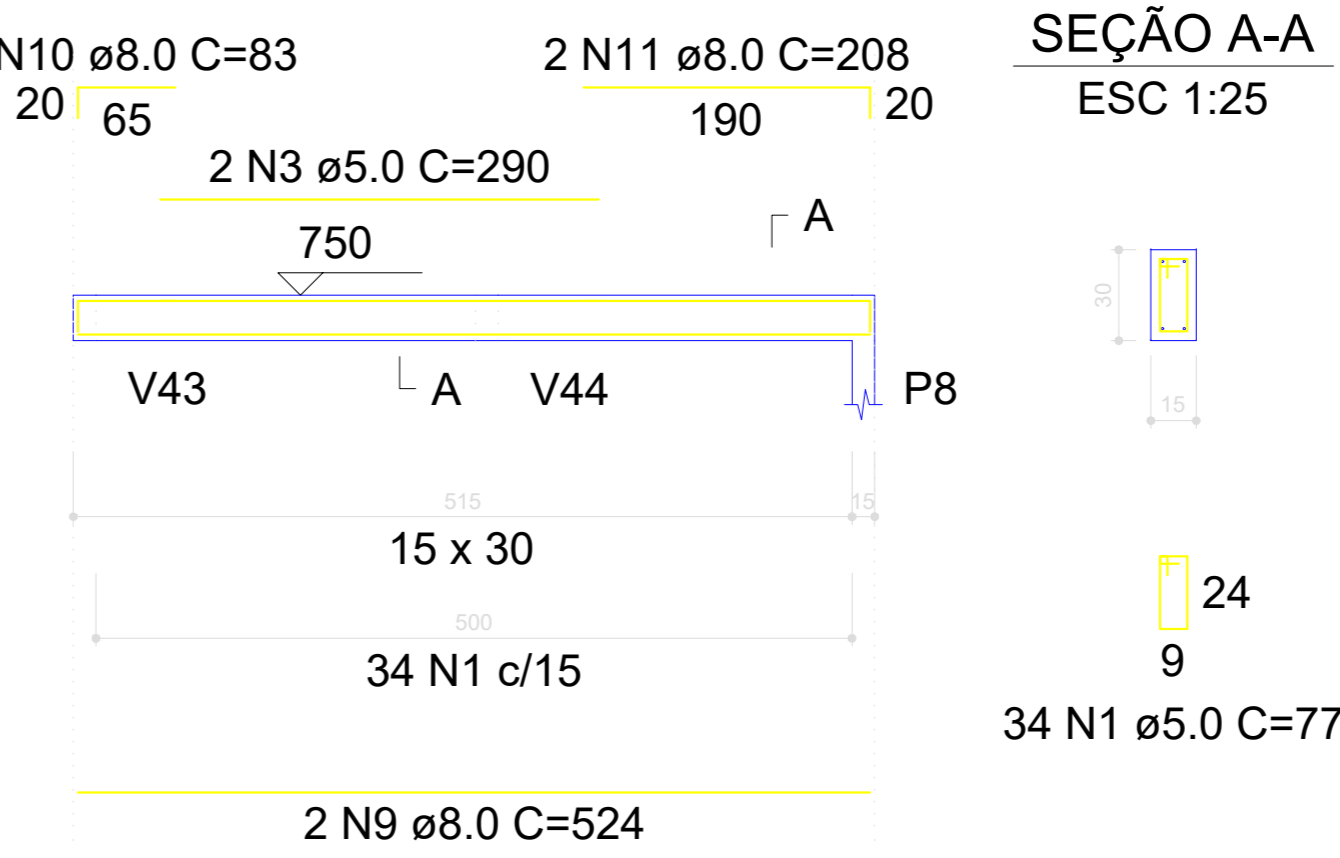
**V50**  
ESC 1:50



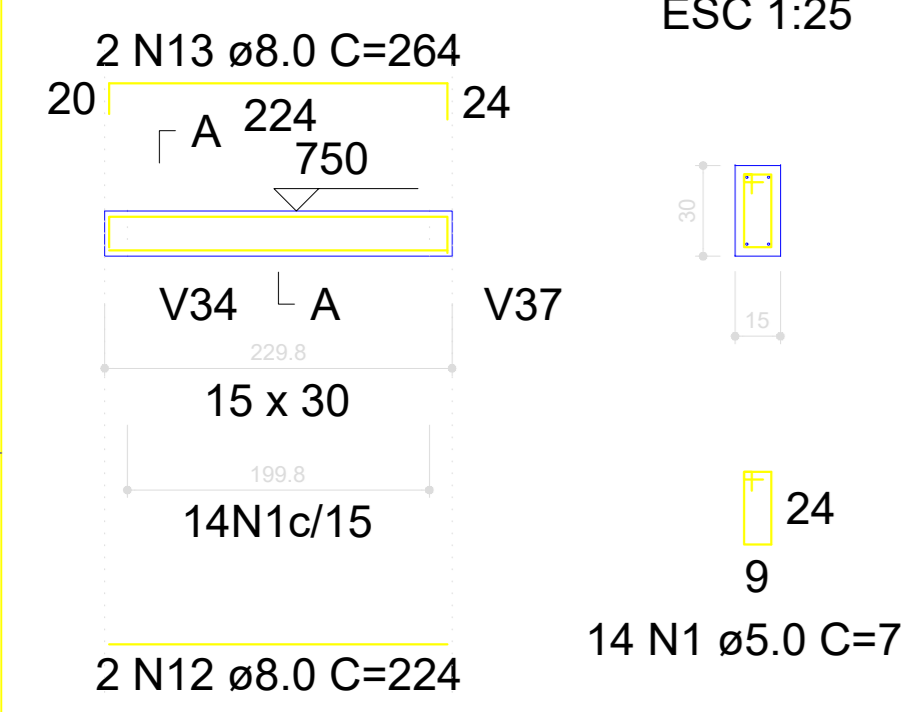
**V1**  
ESC 1:50



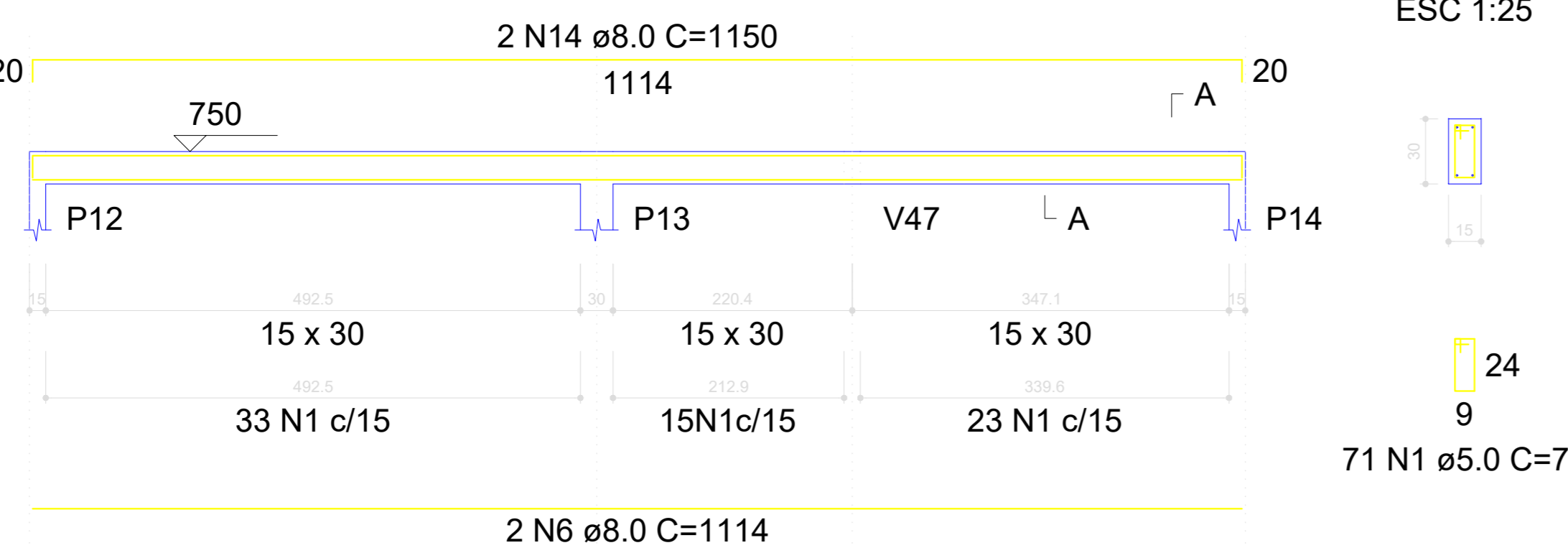
**V2**  
ESC 1:50



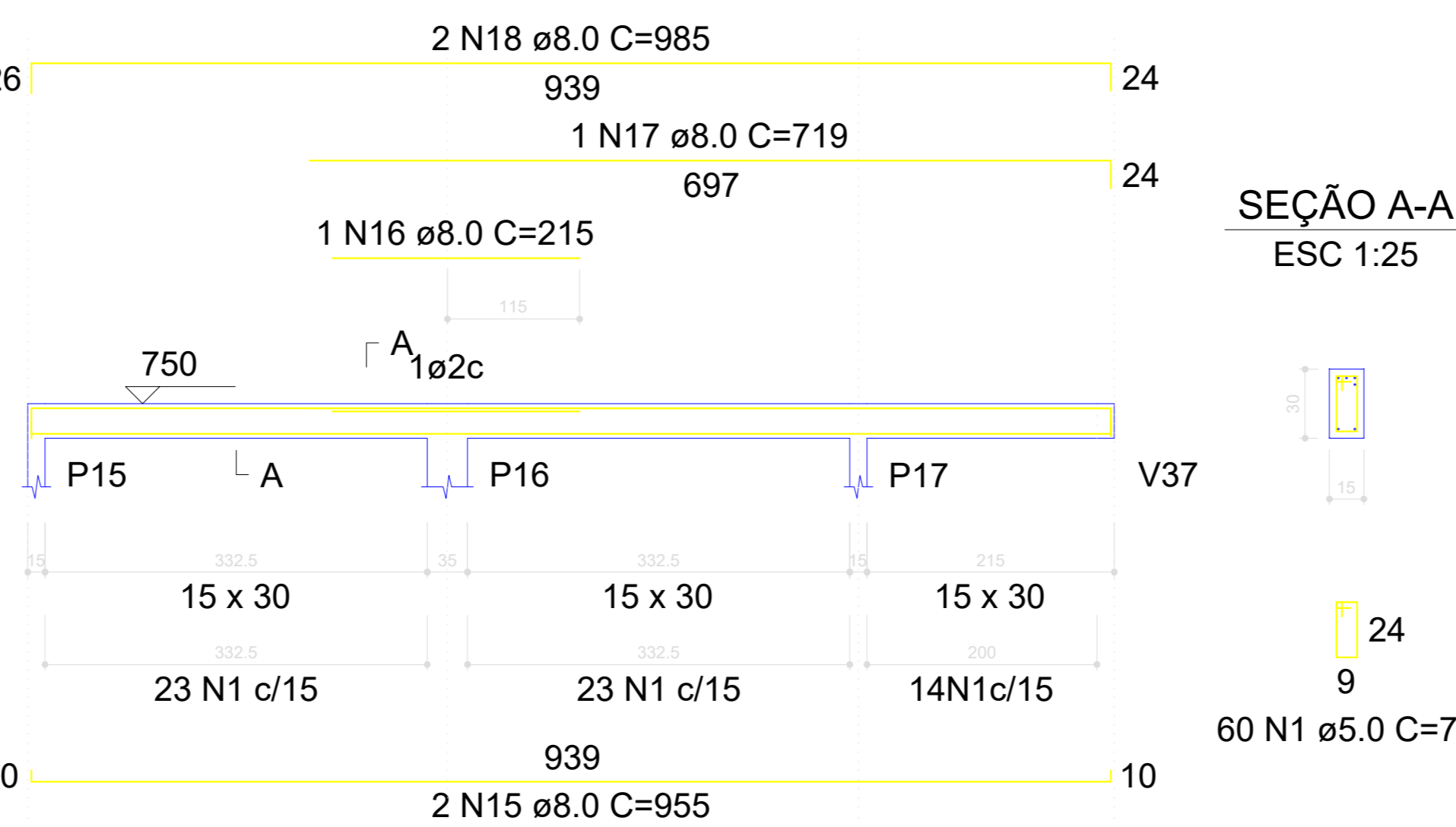
**V3**  
ESC 1:50



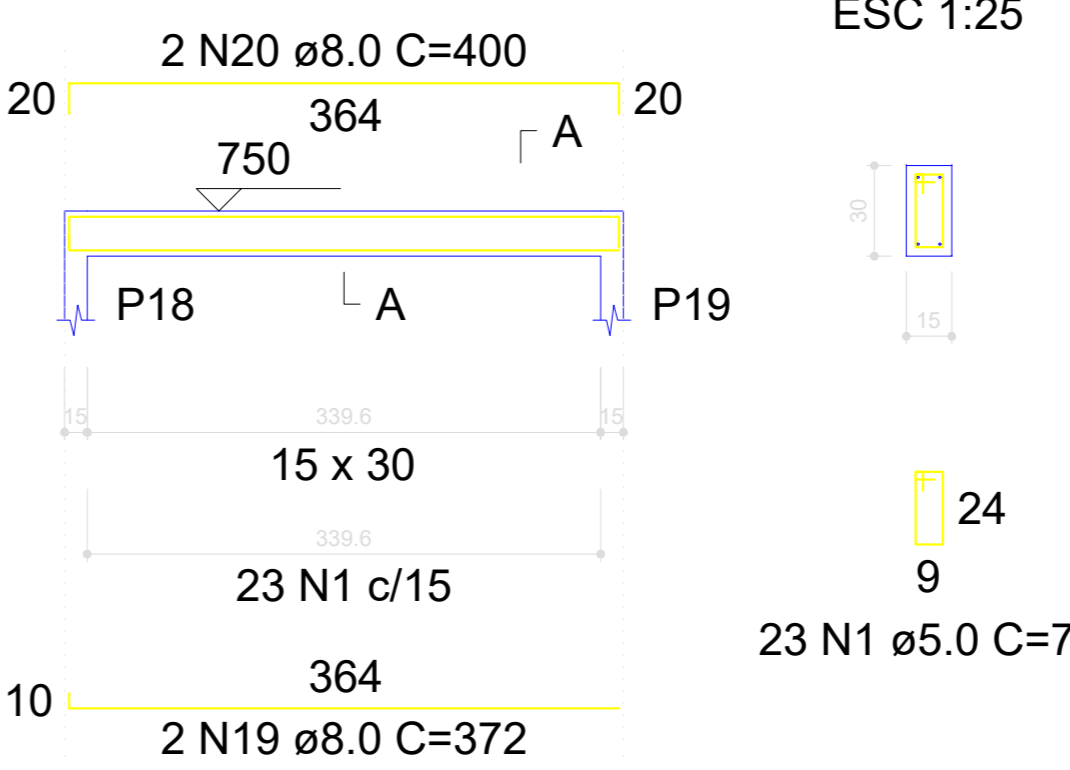
**V4**  
ESC 1:50



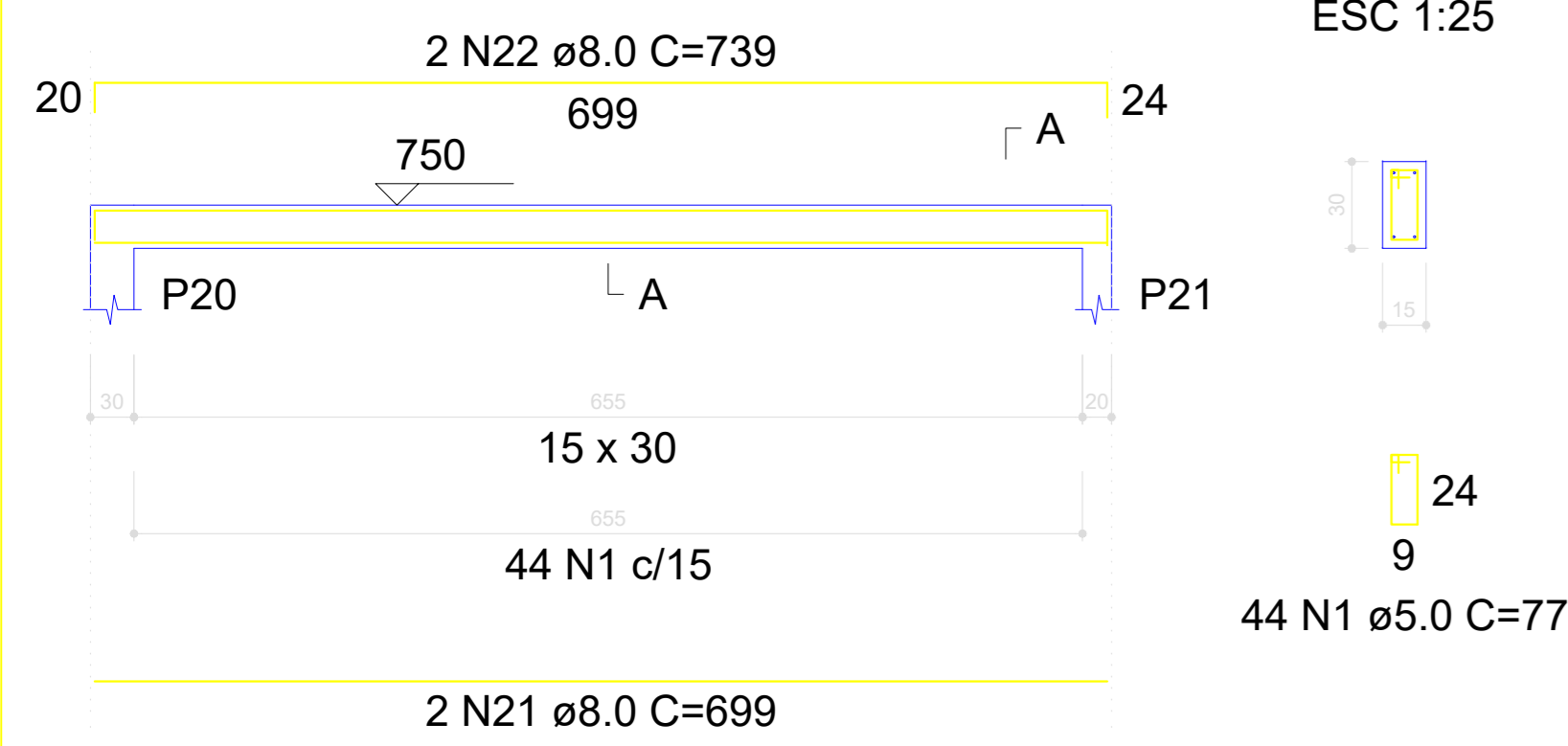
**V5**  
ESC 1:50



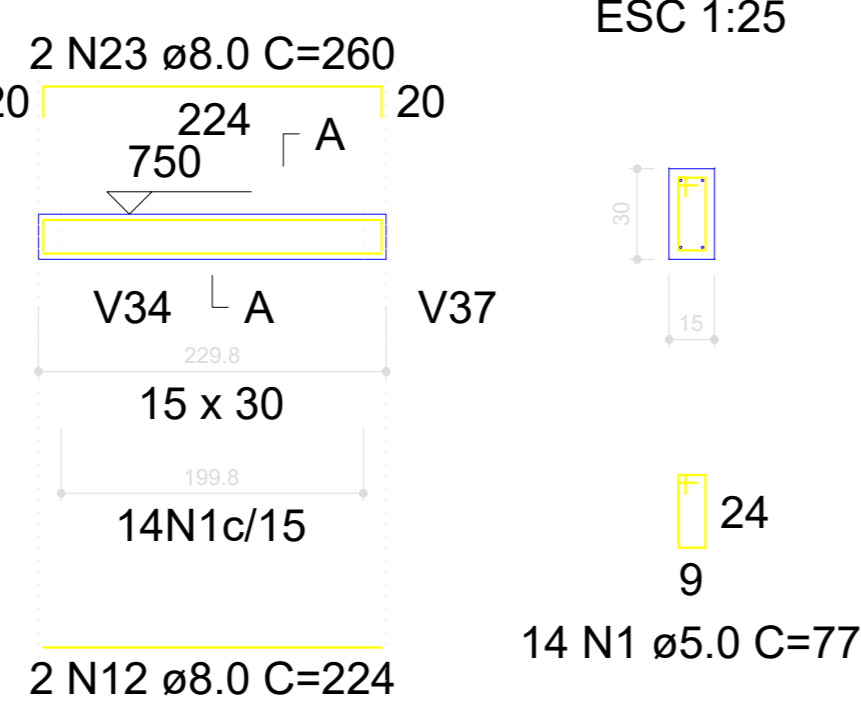
**V6**  
ESC 1:50



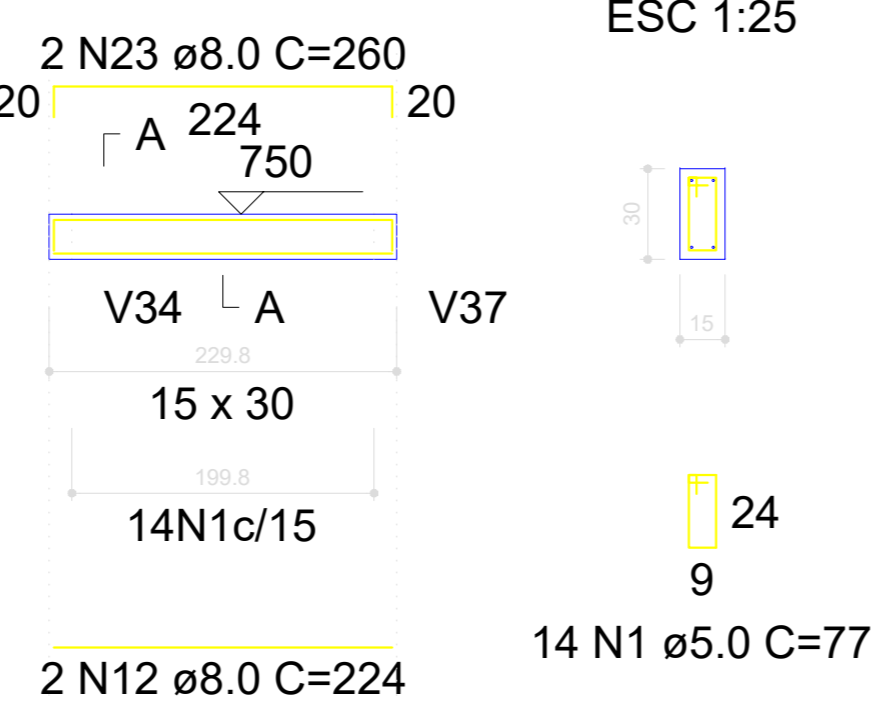
**V7**  
ESC 1:50



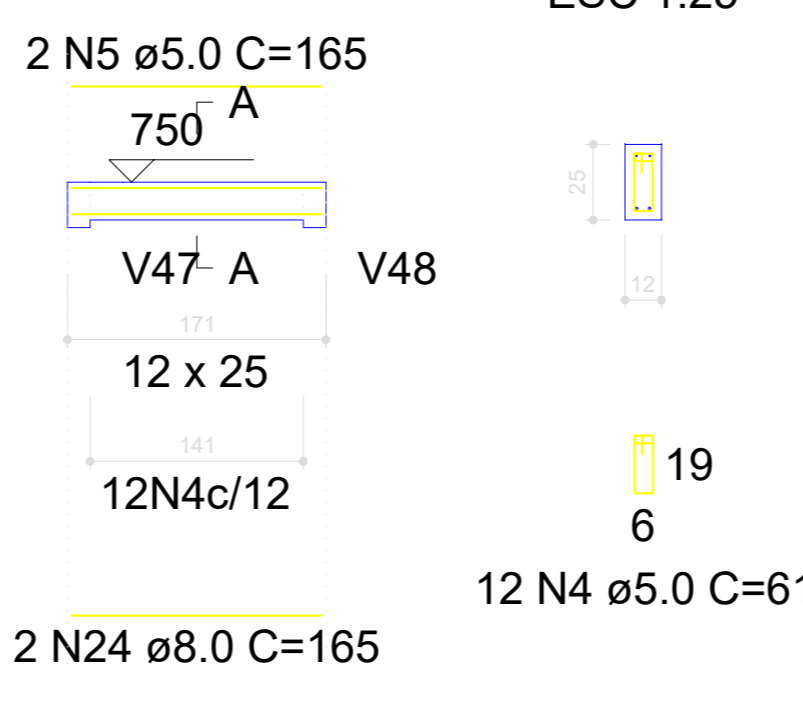
**V8**  
ESC 1:50



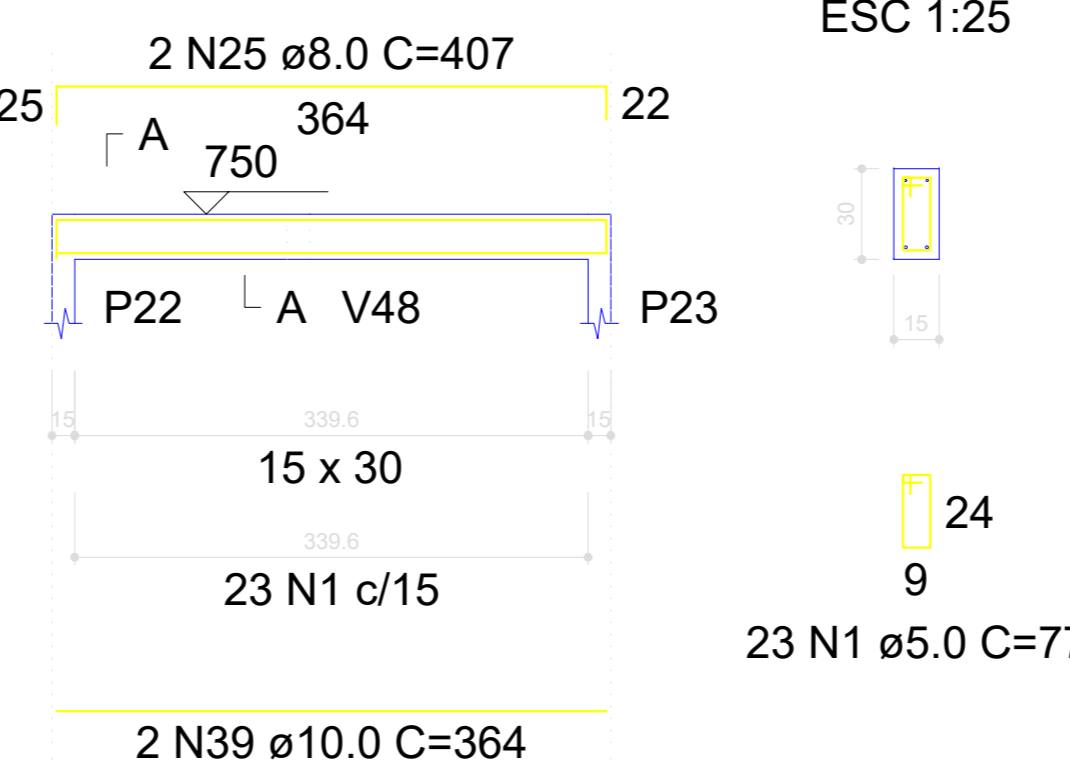
**V9**  
ESC 1:50



**V10**  
ESC 1:50



**V11**  
ESC 1:50



RELAÇÃO DO AÇO

V1-L3	V2-L3	V3-L3
V4-L3	V5-L3	V6-L3
V7-L3	V8-L3	V9-L3
V10-L3	V11-L3	V49-L2
V50-L2		

AÇO	N	DIAM (mm)	QUANT	C.UNIT (cm)	C.TOTAL (cm)
CA60	1	5.0	627	77	48279
	2	5.0	2	300	600
	3	5.0	2	290	580
	4	5.0	12	61	732
	5	5.0	2	165	330
	6	8.0	4	1114	4456
	7	8.0	2	728	1456
	8	8.0	2	143	286
	9	8.0	2	524	1048
	10	8.0	2	83	166
	11	8.0	2	208	416
CA50	12	8.0	6	224	1344
	13	8.0	2	264	528
	14	8.0	2	1150	2300
	15	8.0	2	955	1910
	16	8.0	1	215	215
	17	8.0	1	719	719
	18	8.0	2	985	1970
	19	8.0	2	372	744
	20	8.0	2	400	800
	21	8.0	2	699	1398
	22	8.0	2	739	1478
	23	8.0	4	260	1040
	24	8.0	2	165	330
	25	8.0	2	407	814
	26	8.0	2	922	1844
	27	8.0	2	1022	2044
	28	8.0	1	207	207
	29	8.0	2	623	1246
	30	8.0	1	155	155
	31	8.0	1	185	185
	32	8.0	1	527	527
	33	8.0	1	707	707
	34	8.0	4	1200	4800
	35	8.0	2	206	412
	36	8.0	1	368	368
	37	8.0	2	984	1968
	38	8.0	2	702	1404
	39	10.0	2	364	728
	40	12.5	2	1197	2394
	41	12.5	2	574	1148

RESUMO DO AÇO

AÇO	DIAM (mm)	C.TOTAL (m)	PESO + 10% (kg)
CA50	8.0	392.9	170.5
	10.0	7.3	4.9
	12.5	35.4	37.5
CA60	5.0	505.2	85.7

PESO TOTAL (kg)	
CA50	213
CA60	85.7

Volume de concreto (C-25) = 4.55 m³  
Área de forma = 76.00 m²

PROJETO: **ESCOLA EDEVAL SUZART COUTINHO**

TÍTULO: **PROJETO ESTRUTURAL**

ENDEREÇO: **ZONA URBANA**

OBJETO: **VIGAS**

MUNICÍPIO: **IBIRAPITANGA - BA**

RESPONSÁVEL TÉCNICO: **ADEBALDO RODRIGUES DOS SANTOS**  
ENG. CIVIL CREA 18429/D

ART: **EST15**

ARQUIVO: **ESC. INDICADA** DATA: **JULHO/2022**