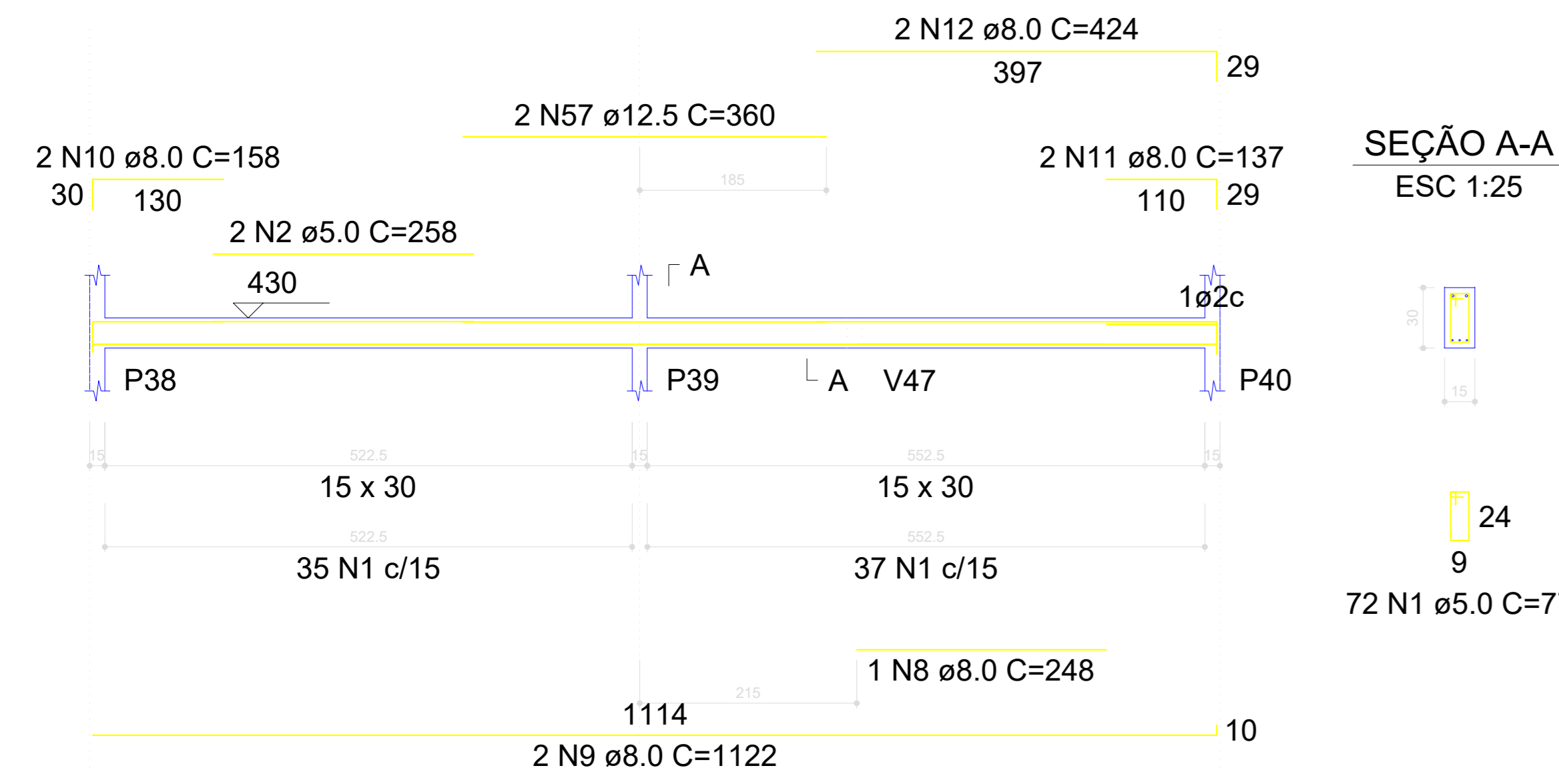
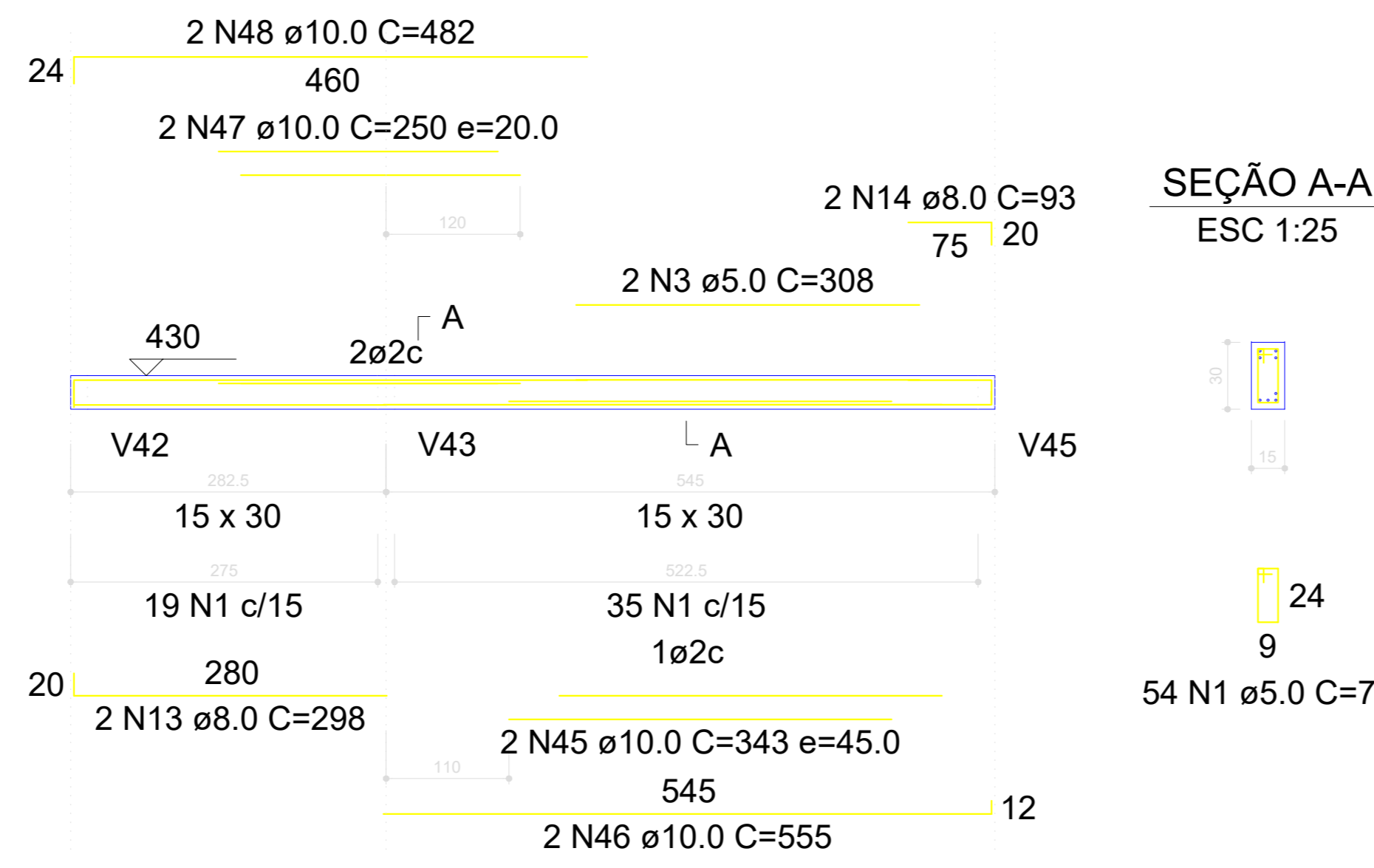


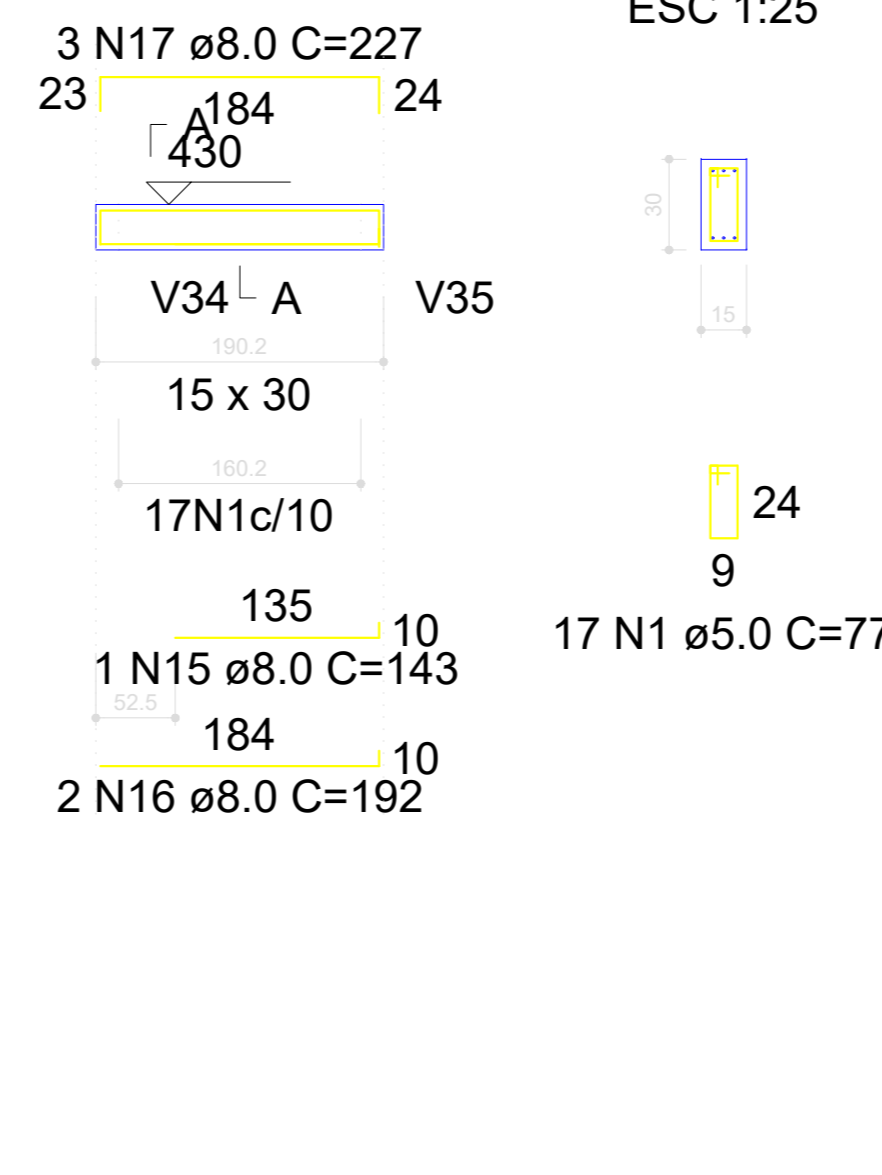
V20
ESC 1:50



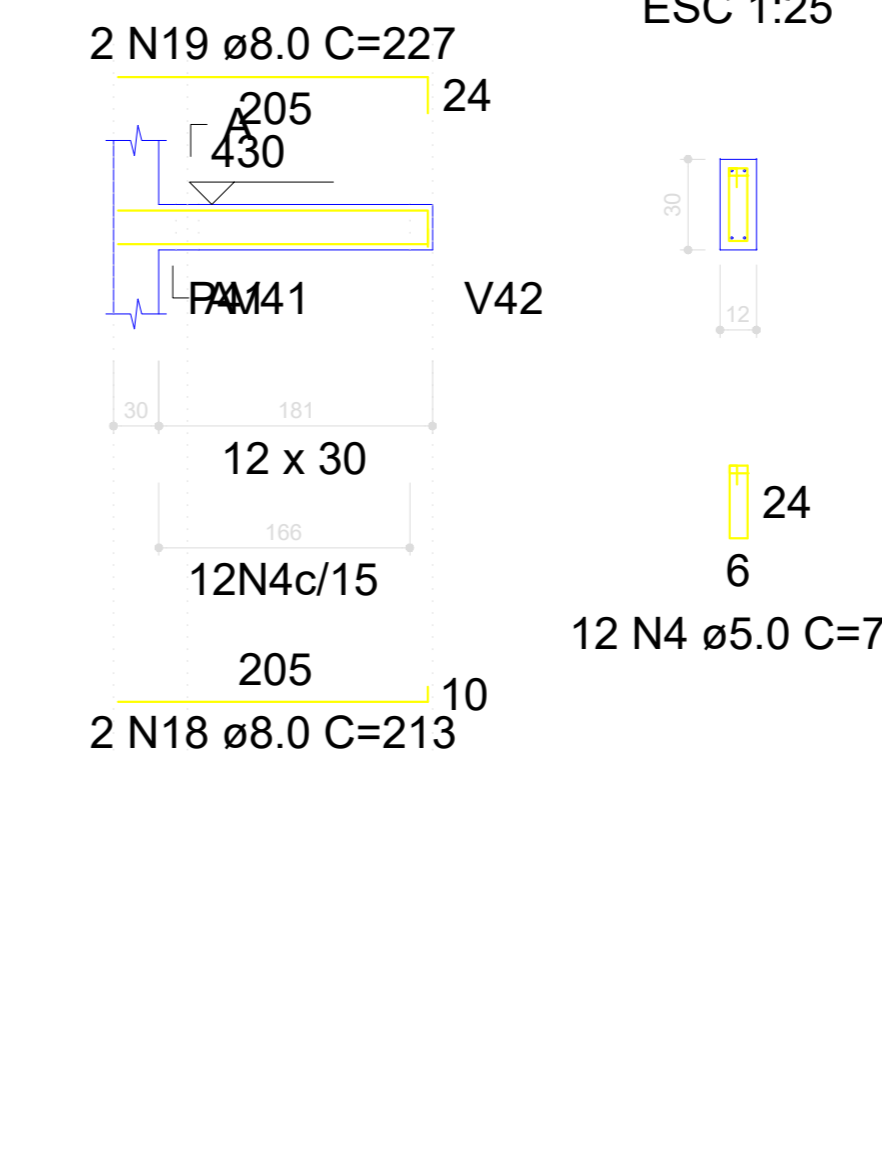
V21
ESC 1:50



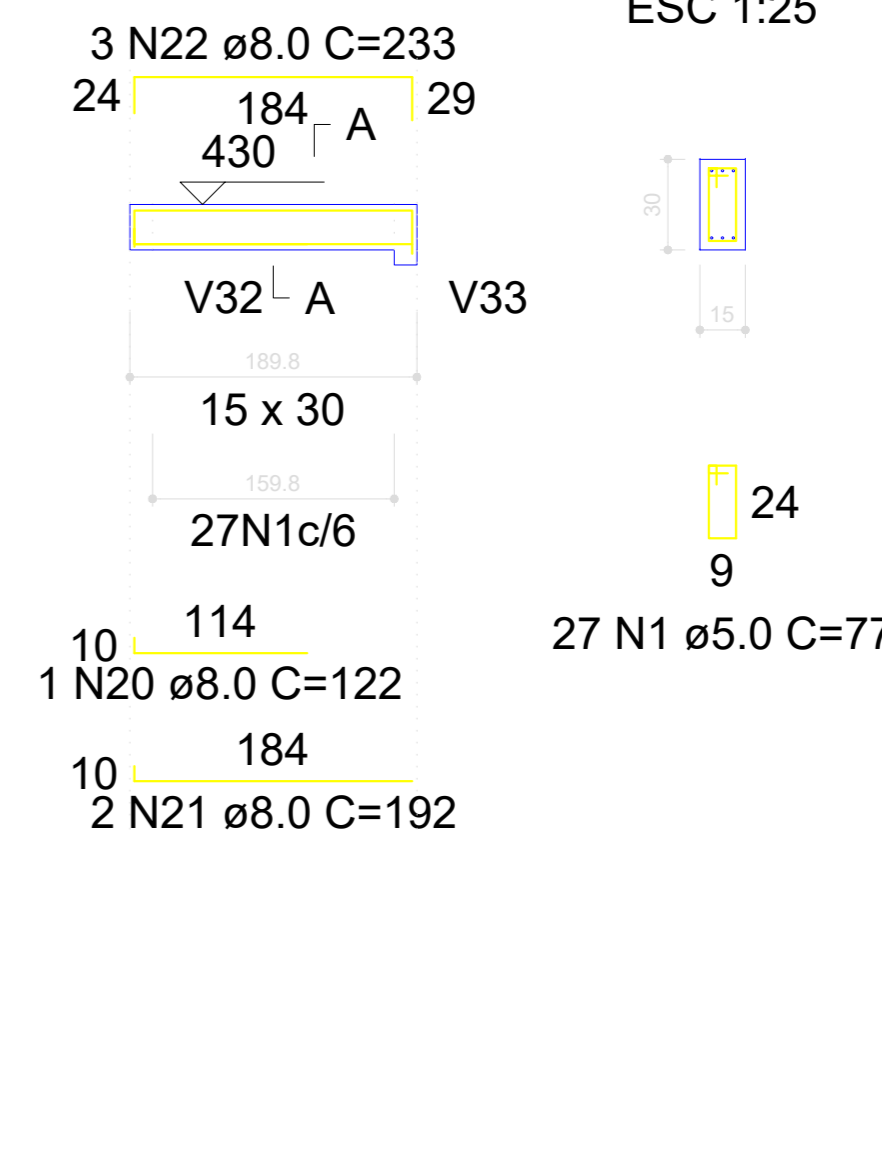
V22
ESC 1:50



V23
ESC 1:50



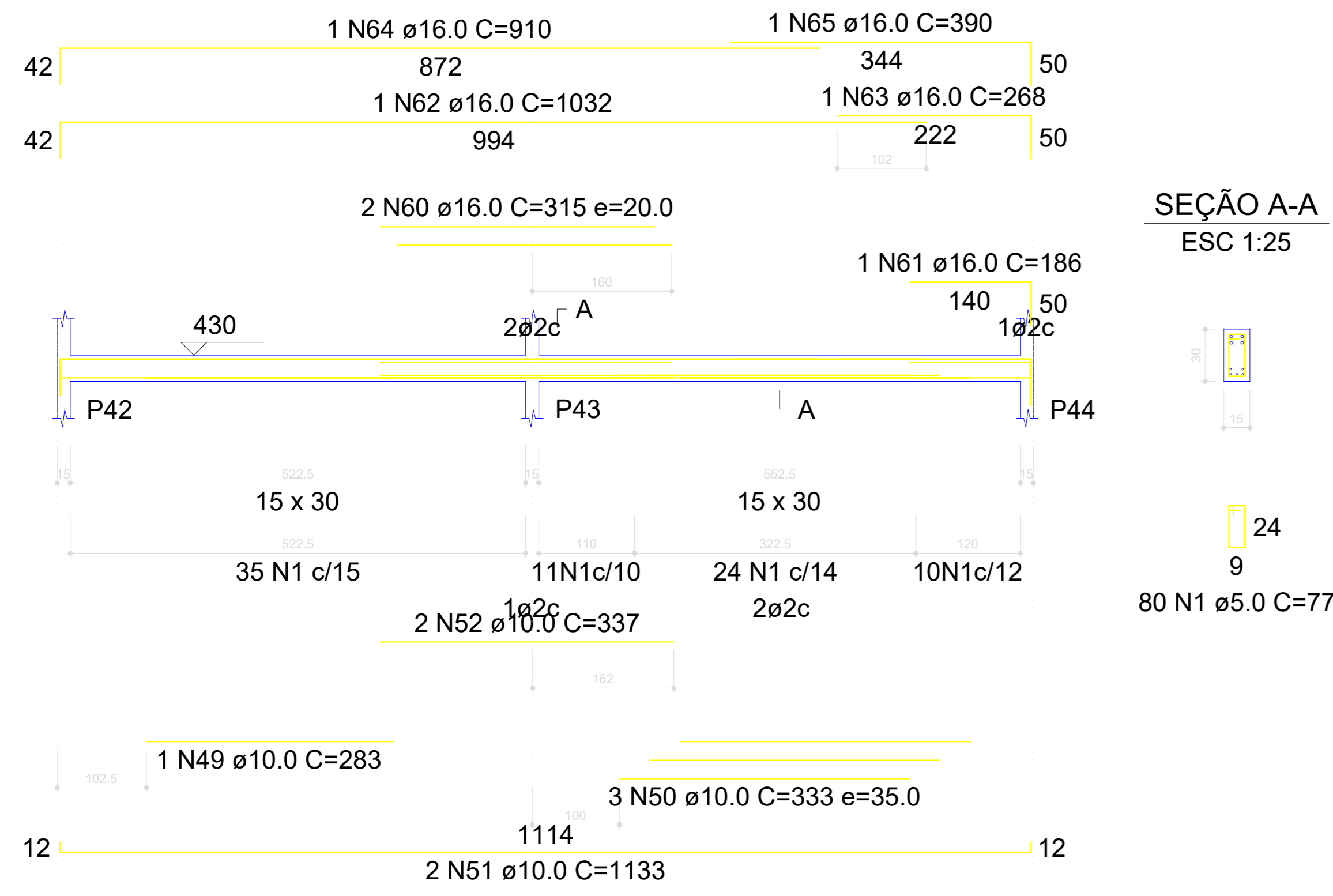
V24
ESC 1:50



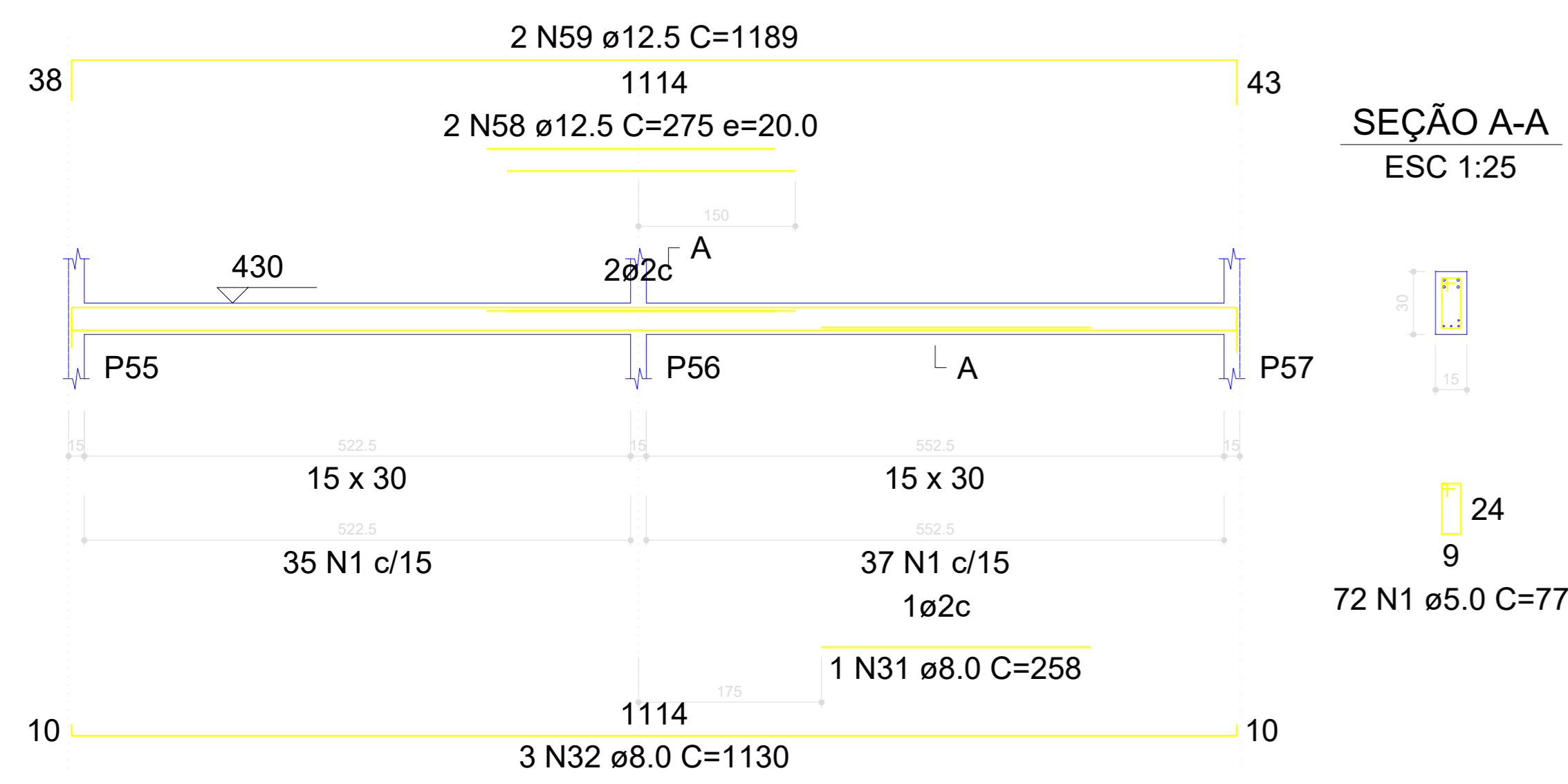
RELAÇÃO DO AÇO

AÇO	N	DIAM (mm)	QUANT	C.UNIT (cm)	C.TOTAL (cm)
CA60	1	5.0	521	77	40117
	2	5.0	2	258	516
	3	5.0	2	308	616
	4	5.0	12	71	852
	5	5.0	21	87	1827
CA50	6	6.3	32	88	2816
	7	6.3	1	76	76
	8	8.0	1	248	248
	9	8.0	2	1122	2244
	10	8.0	2	158	316
	11	8.0	2	137	274
	12	8.0	2	424	848
	13	8.0	2	298	596
	14	8.0	2	93	186
	15	8.0	1	143	143
	16	8.0	2	192	384
	17	8.0	3	227	681
	18	8.0	2	213	426
	19	8.0	2	227	454
	20	8.0	1	122	122
	21	8.0	2	192	384
	22	8.0	3	233	699
	23	8.0	1	137	137
	24	8.0	1	248	248
	25	8.0	2	655	1310
	26	8.0	1	182	182
	27	8.0	2	190	380
	28	8.0	2	210	420
	29	8.0	2	292	584
	30	8.0	2	320	640
	31	8.0	1	258	258
	32	8.0	3	1130	3390
	33	8.0	2	210	420
	34	8.0	2	1107	2214
	35	8.0	2	181	362
	36	8.0	2	1167	2334
	37	8.0	2	175	350
	38	8.0	2	215	430
	39	8.0	1	160	160
	40	8.0	1	200	200
	41	8.0	2	1200	2400
	42	8.0	2	1194	2388
	43	8.0	1	84	84
	44	8.0	2	206	412
	45	10.0	2	343	686
	46	10.0	2	555	1110
	47	10.0	2	250	500
	48	10.0	2	482	964
	49	10.0	1	283	283
	50	10.0	3	333	999
	51	10.0	2	1133	2266
	52	10.0	2	337	674
	53	10.0	1	175	175
	54	10.0	1	326	326
	55	10.0	2	682	1364
	56	10.0	2	243	486
	57	12.5	2	360	720
	58	12.5	2	275	550
	59	12.5	2	1189	2378
	60	16.0	2	315	630
	61	16.0	1	186	186
	62	16.0	1	1032	1032
	63	16.0	1	268	268
	64	16.0	1	910	910
	65	16.0	1	390	390

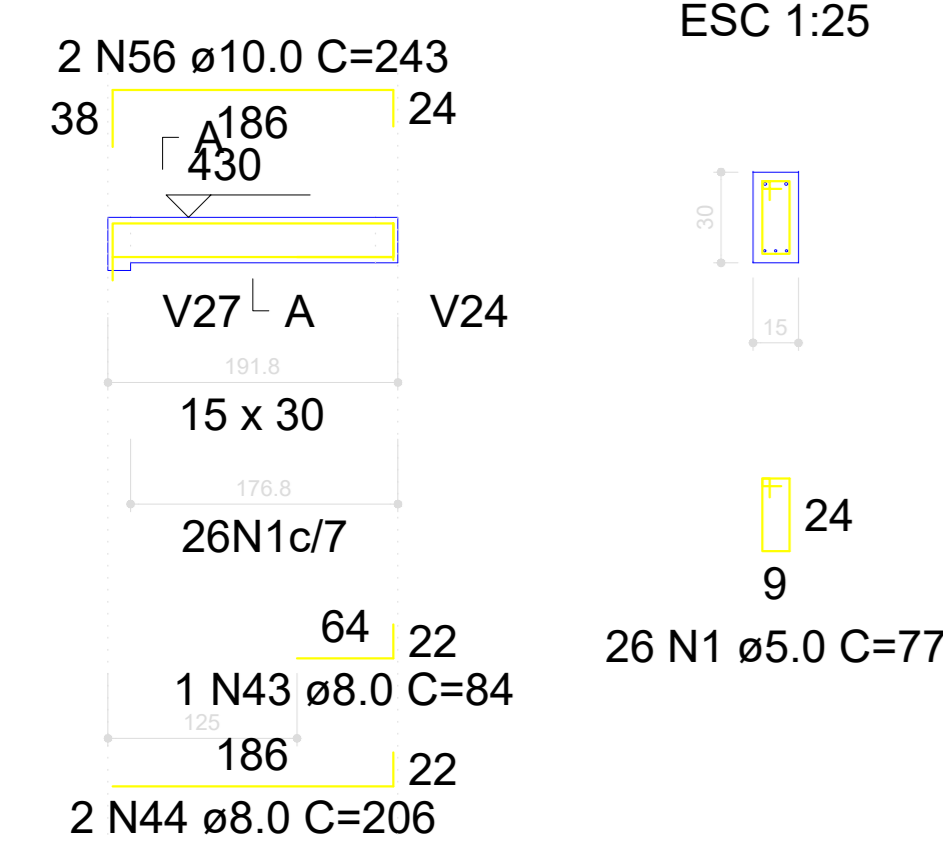
V25
ESC 1:50



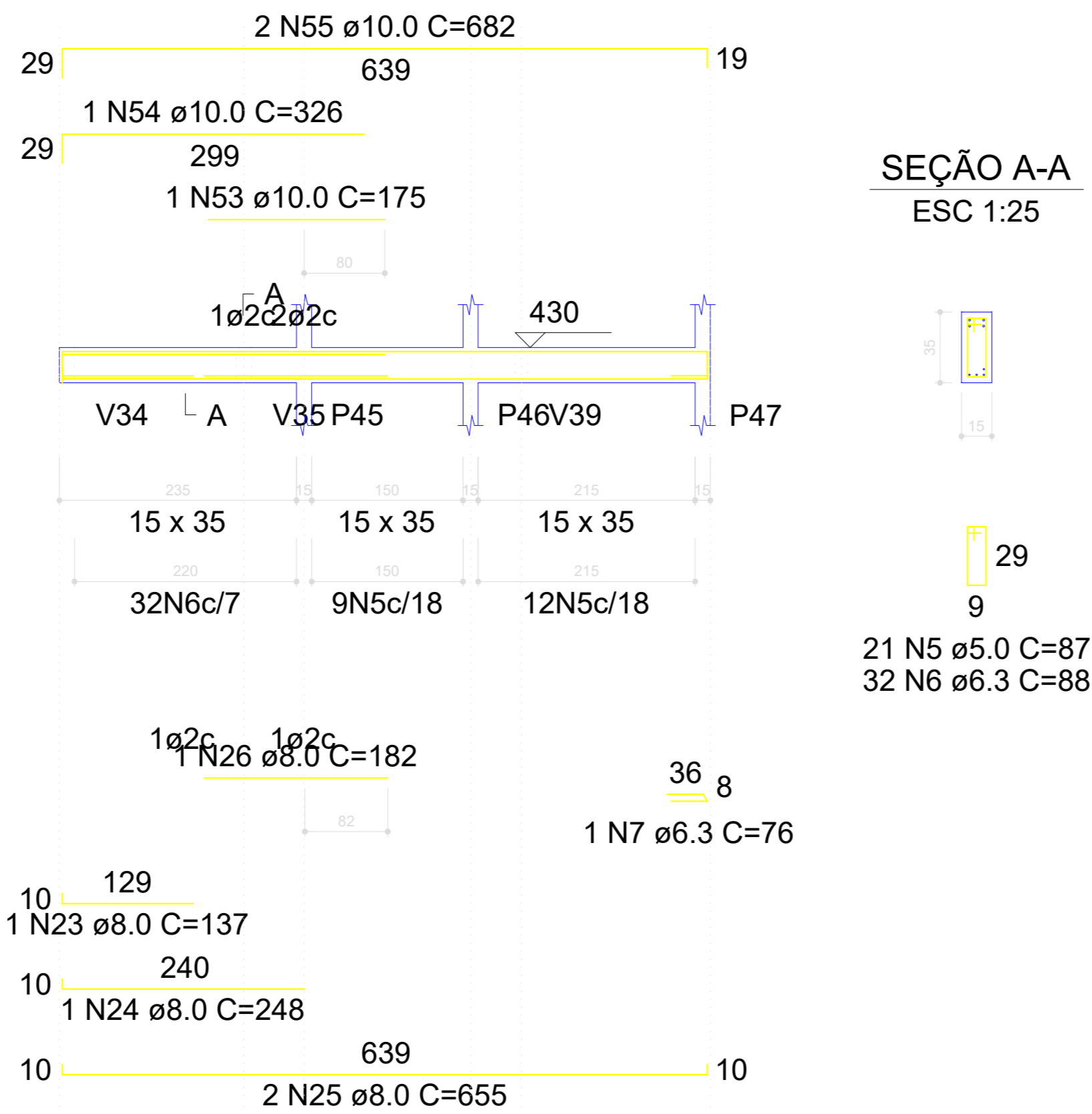
V30
ESC 1:50



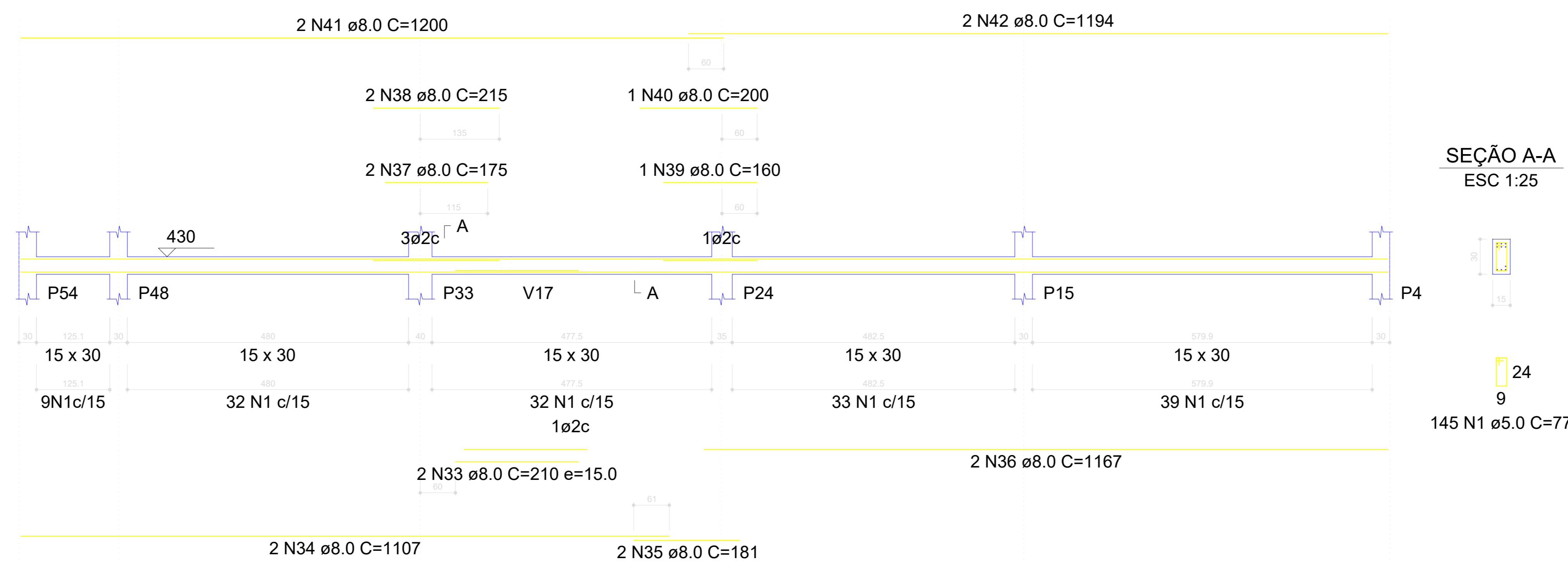
V32
ESC 1:50



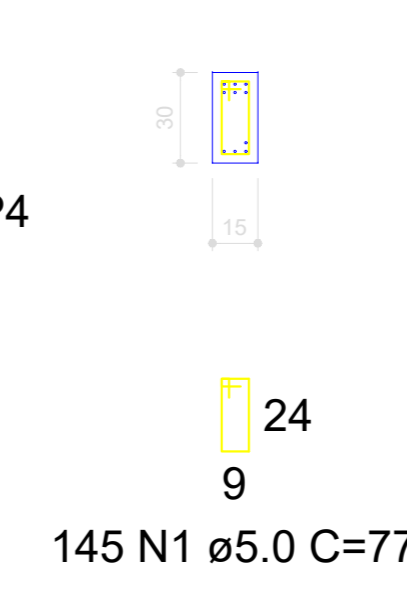
V26
ESC 1:50



V31
ESC 1:50



SEÇÃO A-A
ESC 1:25



RESUMO DO AÇO

AÇO	DIAM (mm)	C.TOTAL (m)	PESO + 10% (kg)
CA50	6.3	28.9	7.8
	8.0	273.1	118.5
	10.0	98.3	66.7
	12.5	36.5	38.7
	16.0	34.2	59.3
CA60	5.0	439.3	74.5
PESO TOTAL (kg)			
CA50	291		
CA60	74.5		

Volume de concreto (C-25) = 3.82 m³
Área de forma = 63.77 m²

PROJETO: **ESCOLA EDEVAL SUZART COUTINHO**

TÍTULO: **PROJETO ESTRUTURAL**

ENDEREÇO: **ZONA URBANA** OBJETO: **VIGAS**

MUNICÍPIO: **IBIRAPITANGA - BA**

RESPONSÁVEL TÉCNICO: **ADEBALDO RODRIGUES DOS SANTOS** ART: **18429/D** PRANCHAS: **EST13**

ARQUIVO: **ESC. INDICADA** DATA: **JULHO/2022**