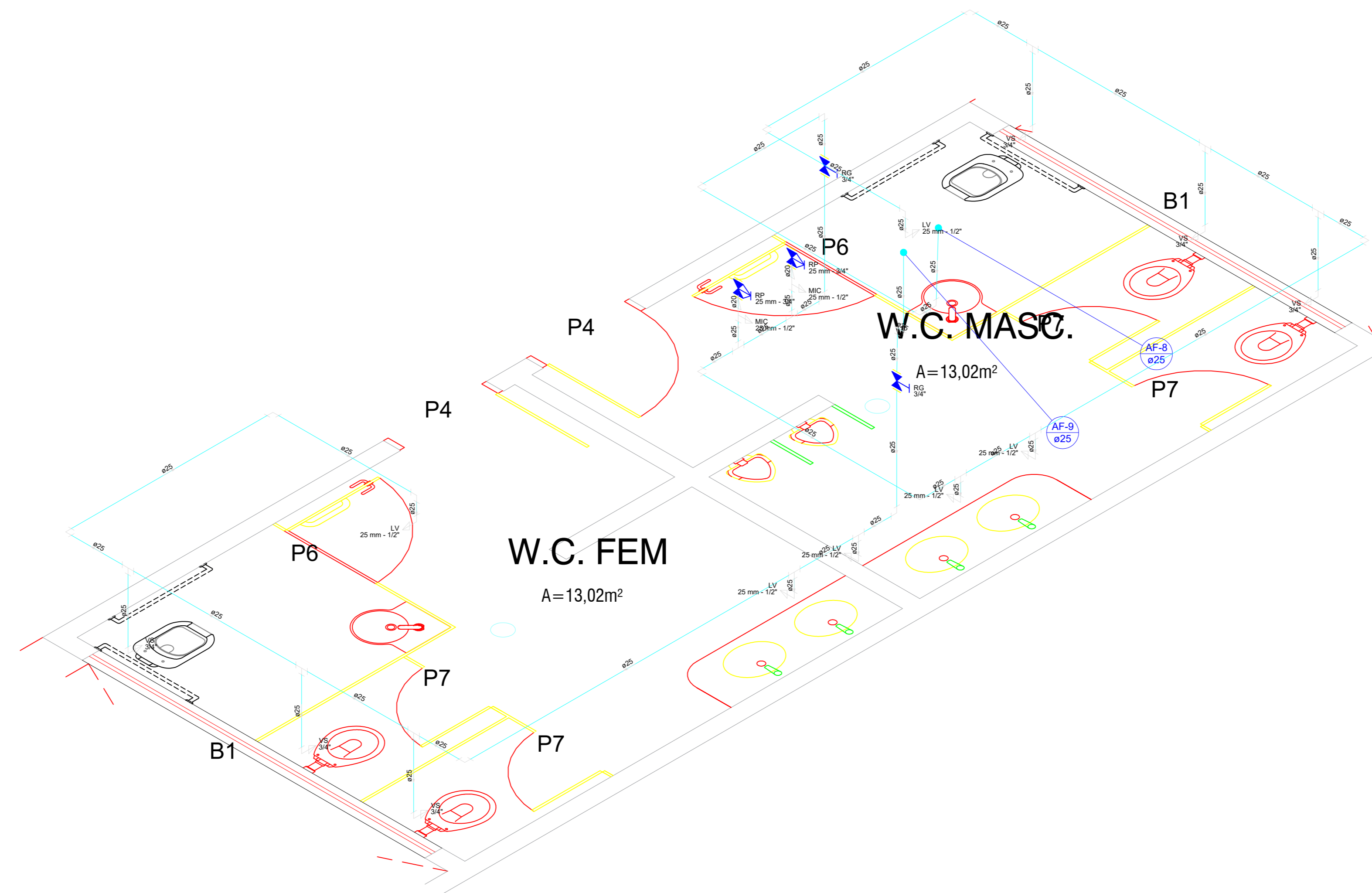
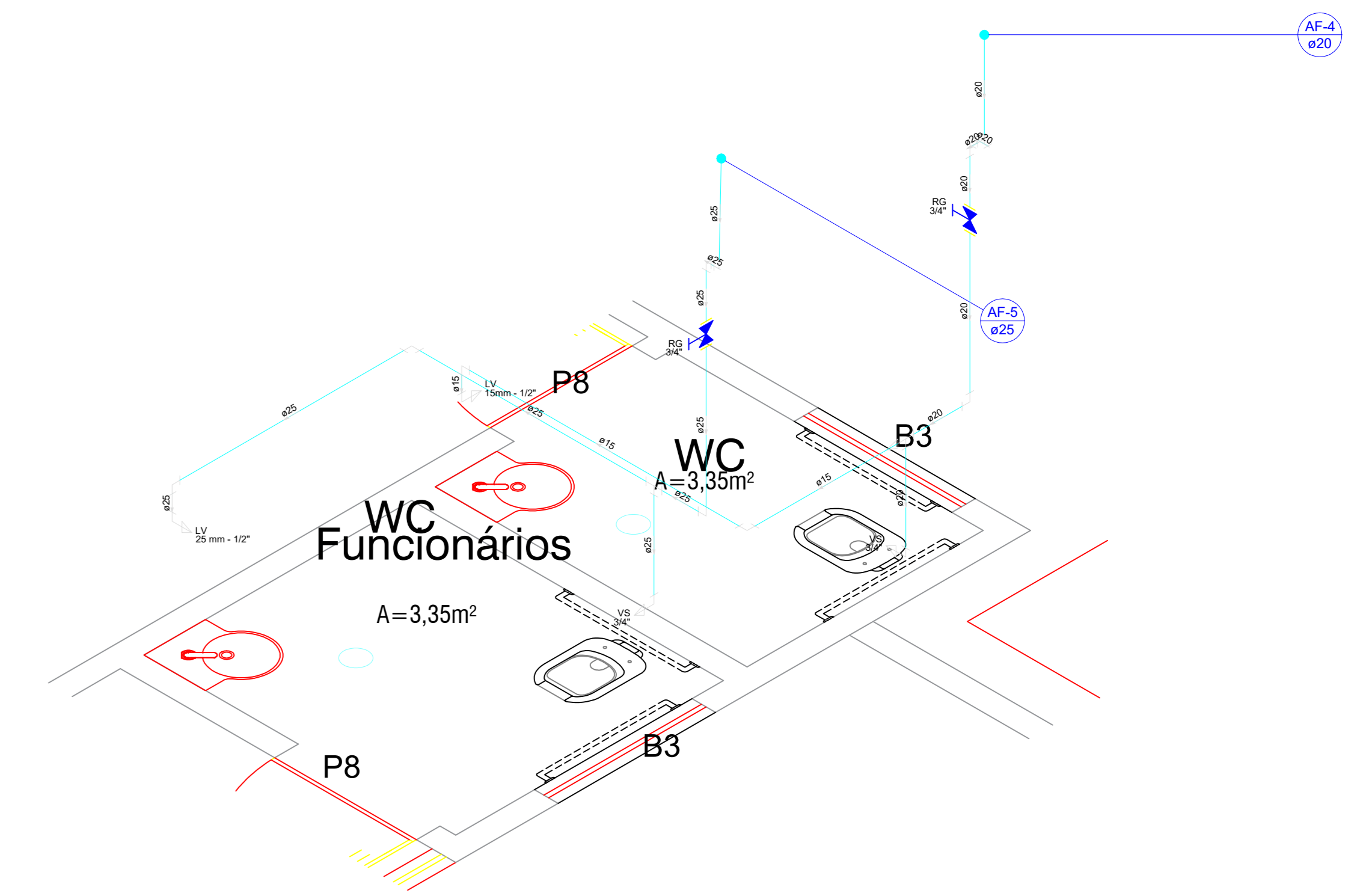


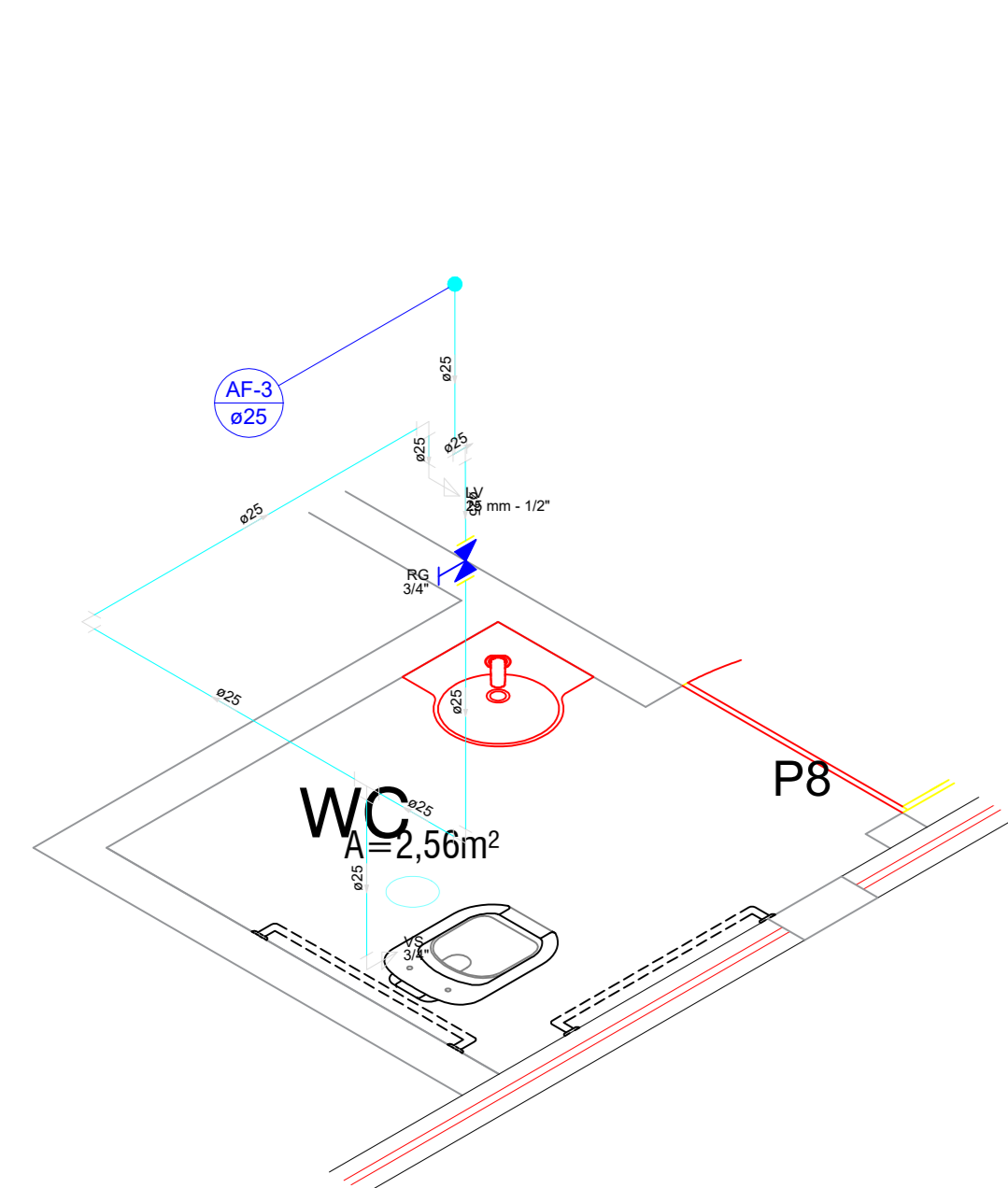
Detalhe H1  
Escala 1:25



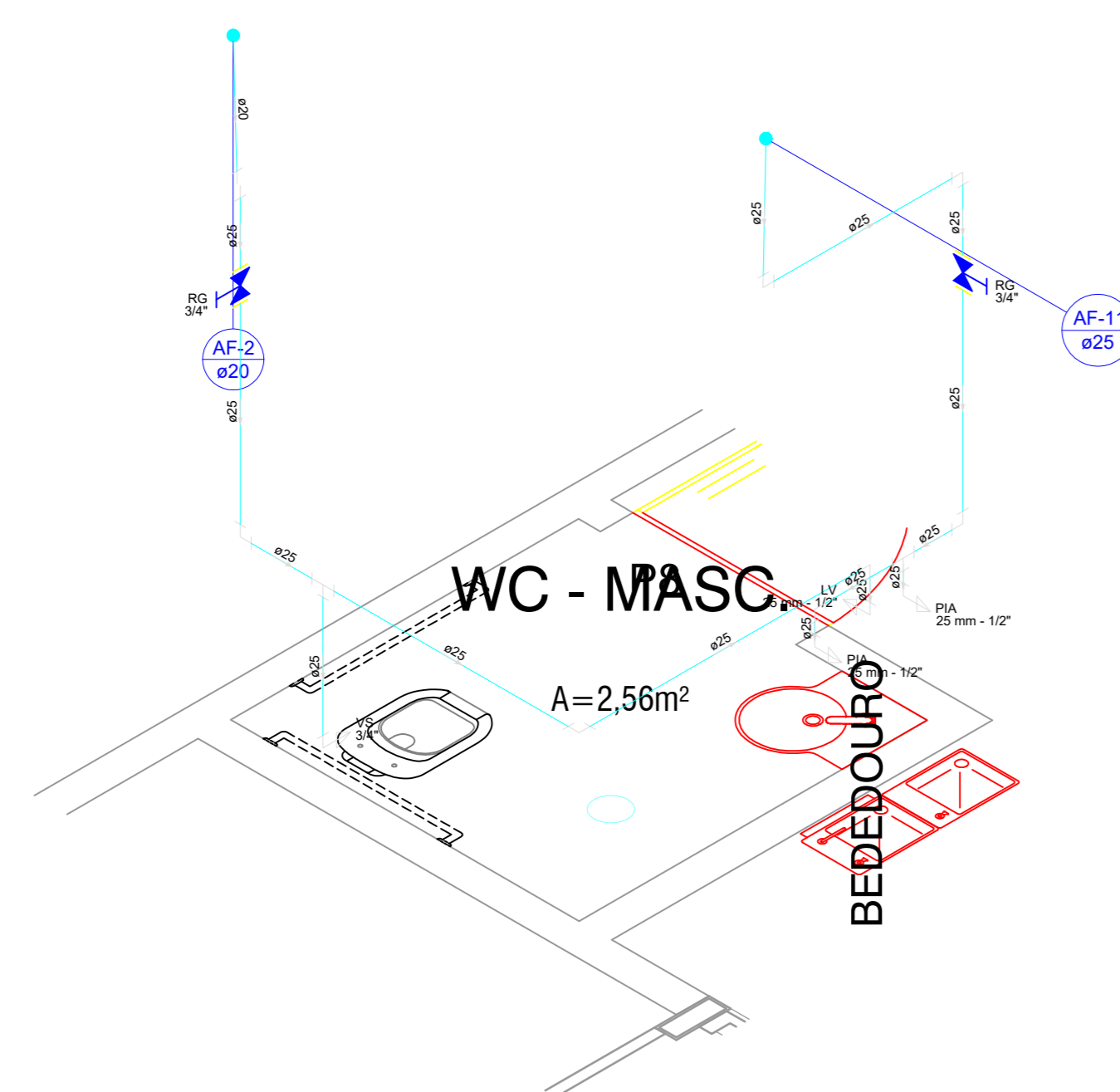
Detalhe H2  
Escala 1:25



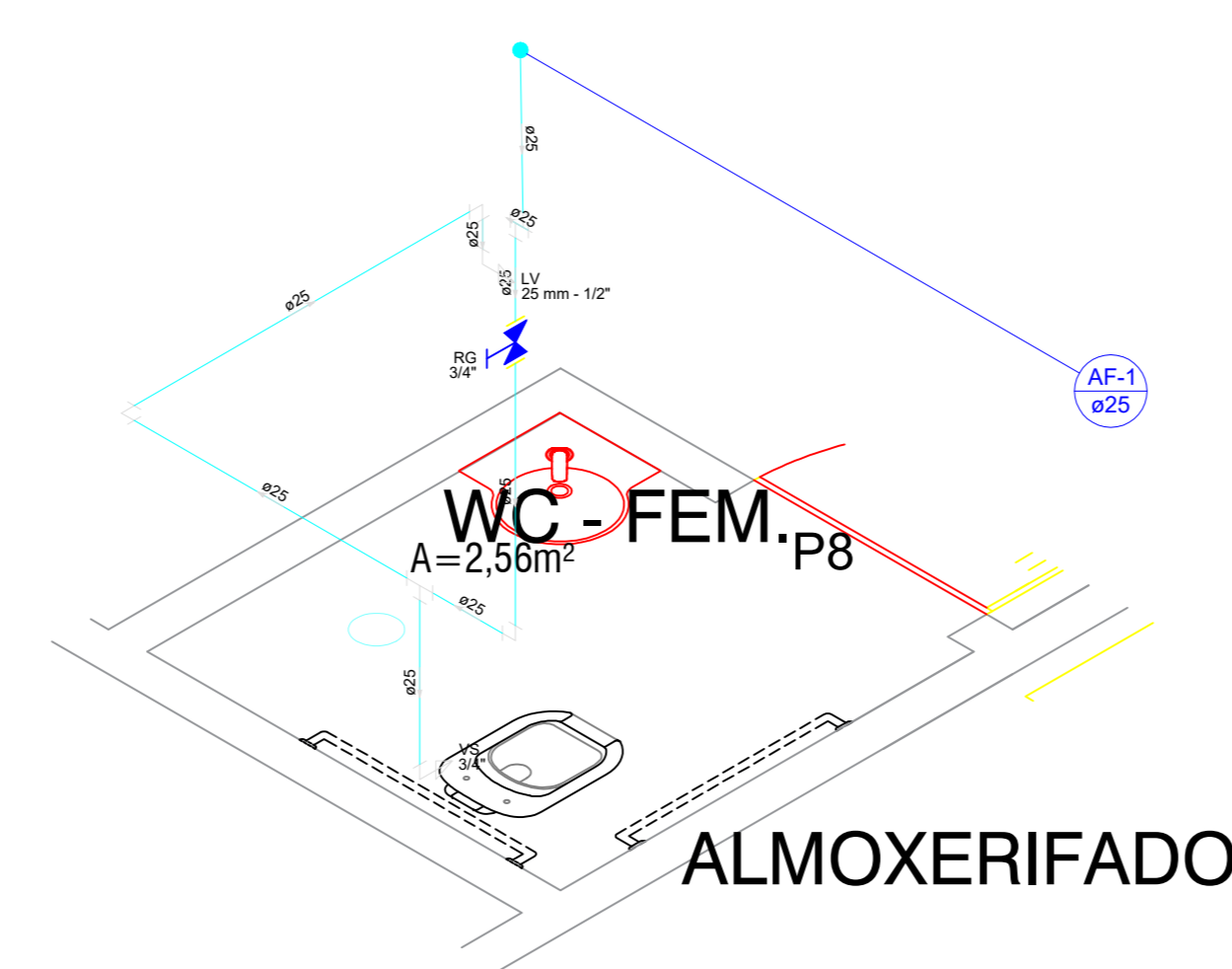
Detalhe H3  
Escala 1:25



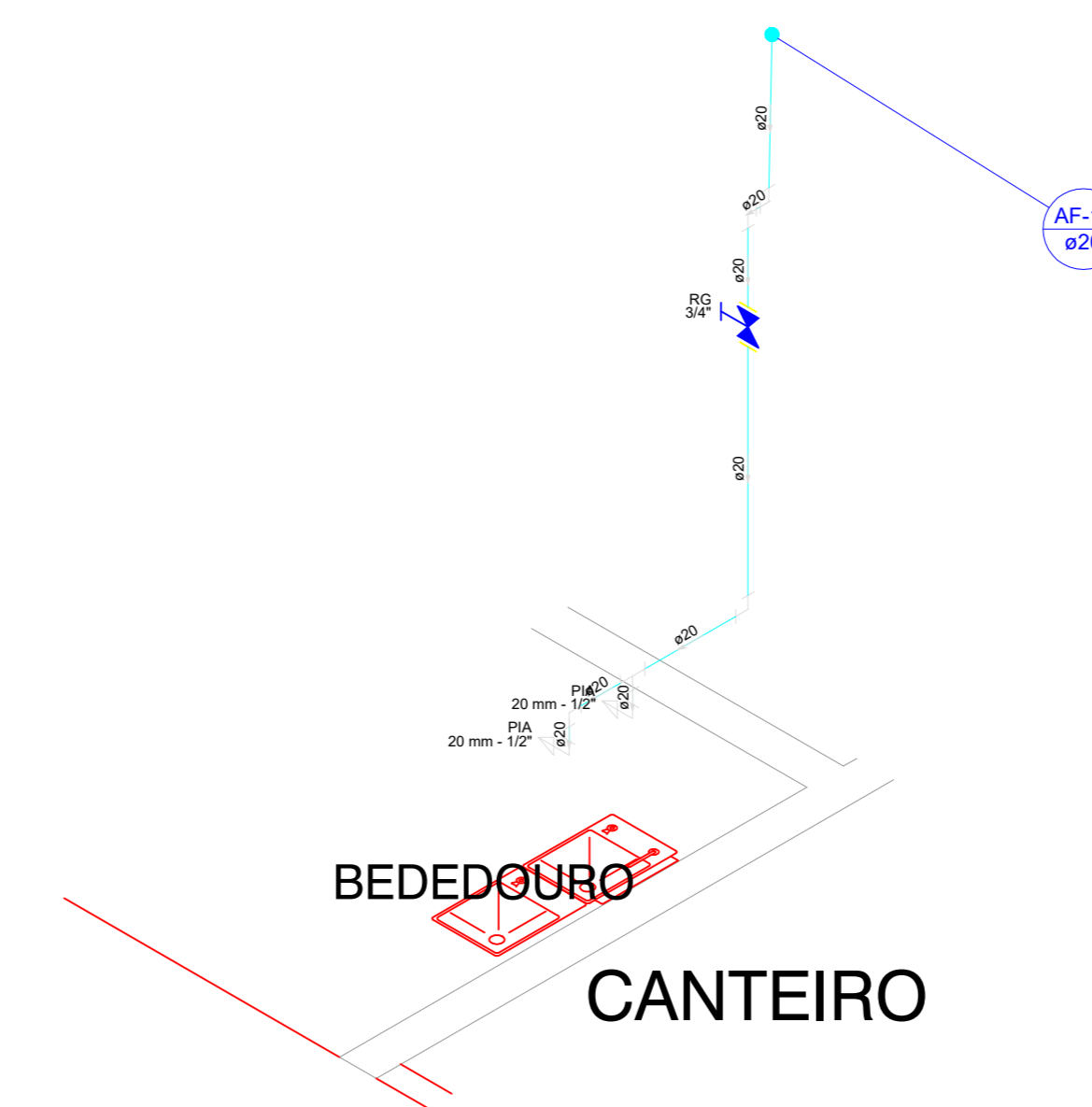
Detalhe H4  
Escala 1:25



Detalhe H5  
Escala 1:25



Detalhe H6  
Escala 1:25



Detalhe H7  
Escala 1:25

PROJETO: <b>ESCOLA EDEVAL SUZART COUTINHO</b>			
TÍTULO: <b>PROJETO SANITÁRIO</b>			
ENDEREÇO:	ZONA URBANA	OBJETO:	ISOMÉTRICO
MUNICÍPIO:	IBIRAPITANGA - BA	RESPONSÁVEL TÉCNICO:	ADEBALDO ACARDELO DOS SANTOS ENG. CIVIL CREA 143918/D
ARQUIVO:	ESC. INDICADA	DATA:	JULHO/2022
			PRANCHA: <b>HID02</b>