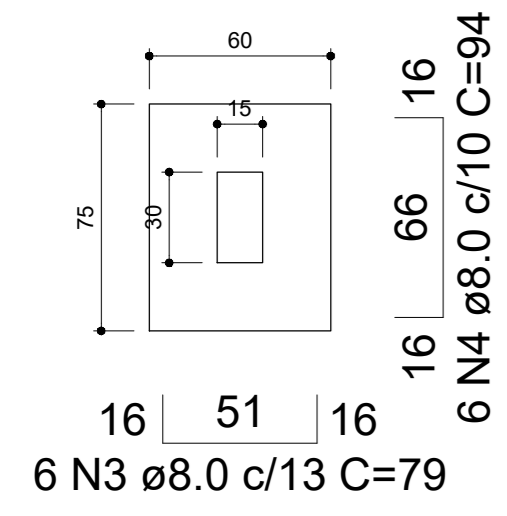


S1=S2=S3=S4=S5=S7=S8=S9=S10=S11=S16=S18  
=S19=S25=S26=S27=S28=S29=S30

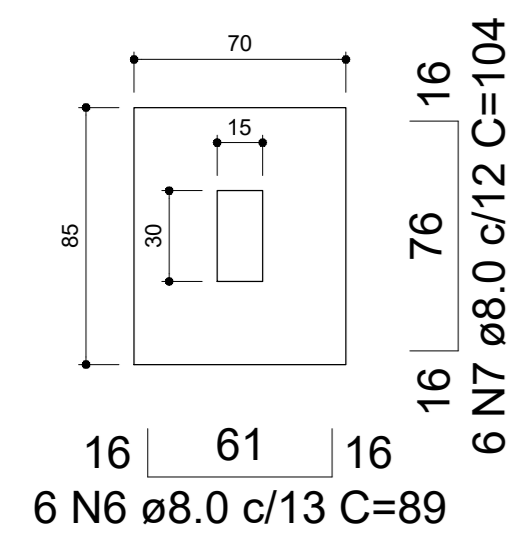
PLANTA  
ESC 1:25



Solo compactado sobre a sapata  
peso específico > 1600.00 kgf/m³

S6=S13=S20=S22=S23

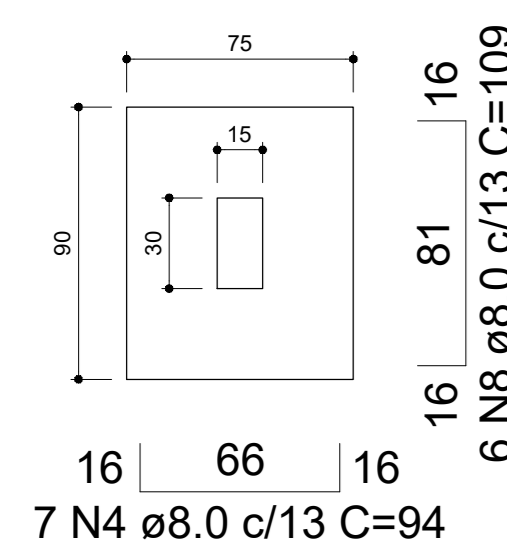
PLANTA  
ESC 1:25



Solo compactado sobre a sapata  
peso específico > 1600.00 kgf/m³

S14=S15=S17

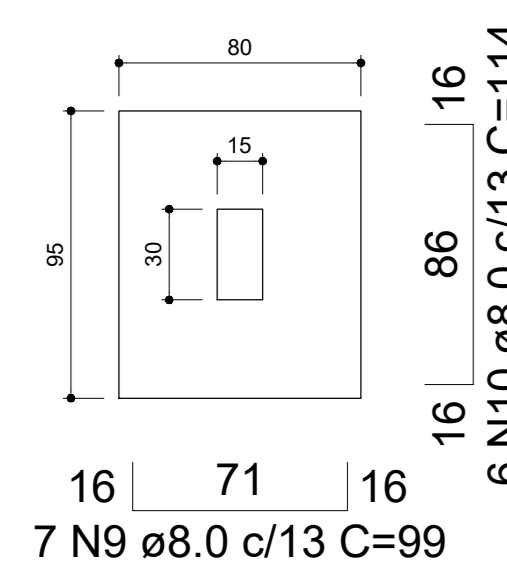
PLANTA  
ESC 1:25



Solo compactado sobre a sapata  
peso específico > 1600.00 kgf/m³

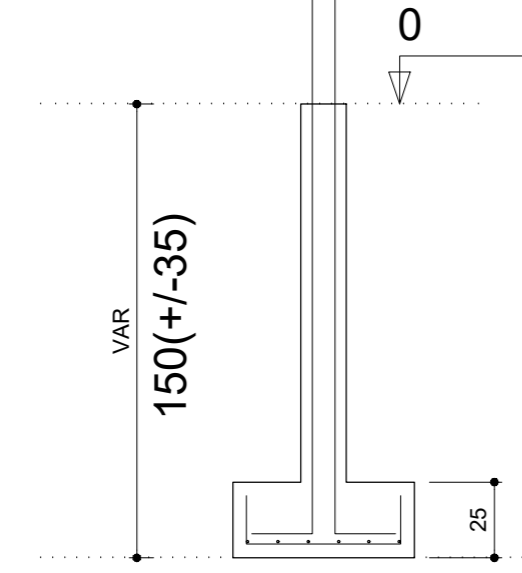
S21=S24

PLANTA  
ESC 1:25

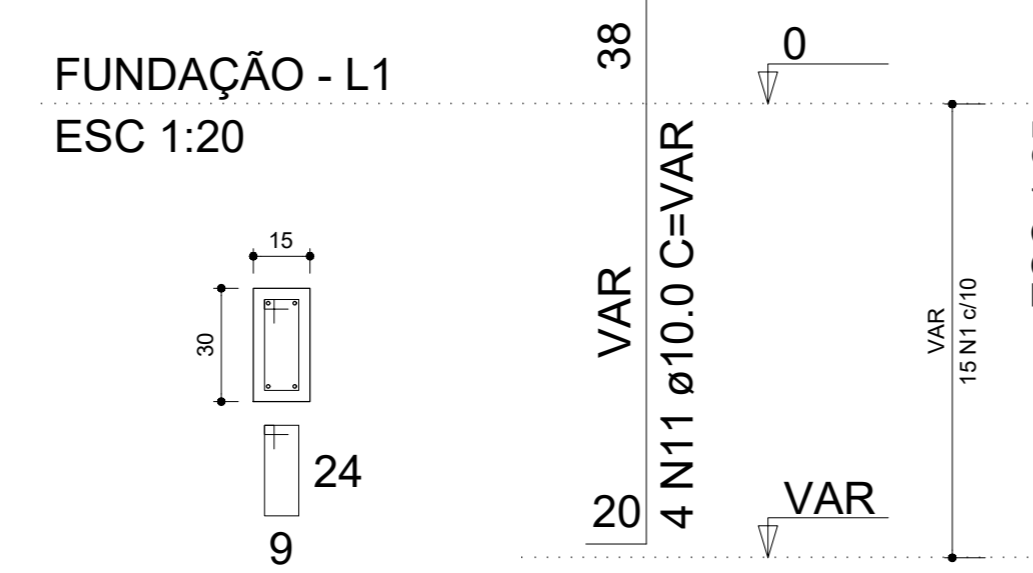


Solo compactado sobre a sapata  
peso específico > 1600.00 kgf/m³

CORTE  
ESC 1:25



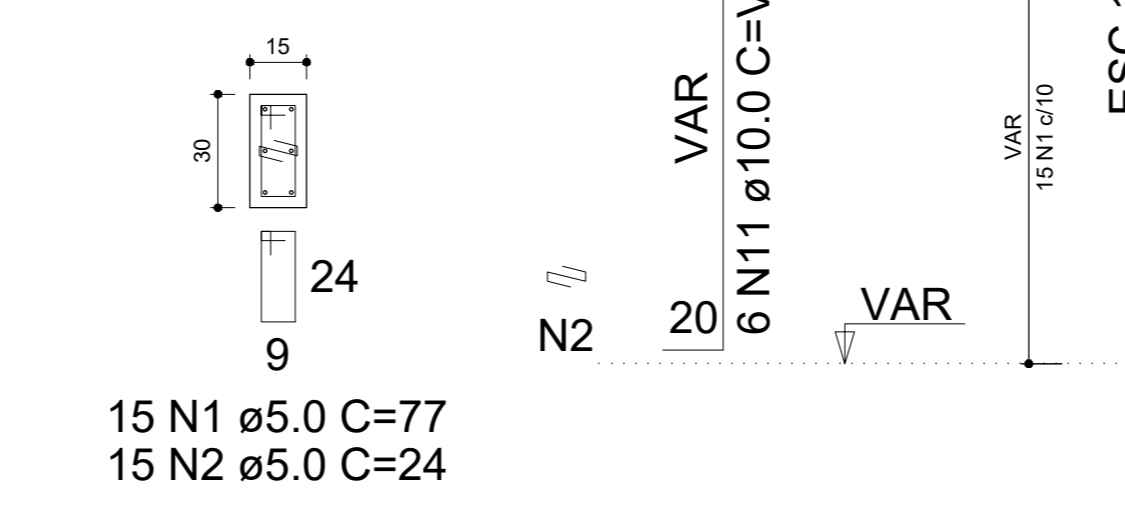
P1=P2=P3=P4=P5=P7=P8=P9=  
=P11=P16=P26=P27=P28=P29=  
=P30



15 N1 ø5.0 C=77

P10=P19

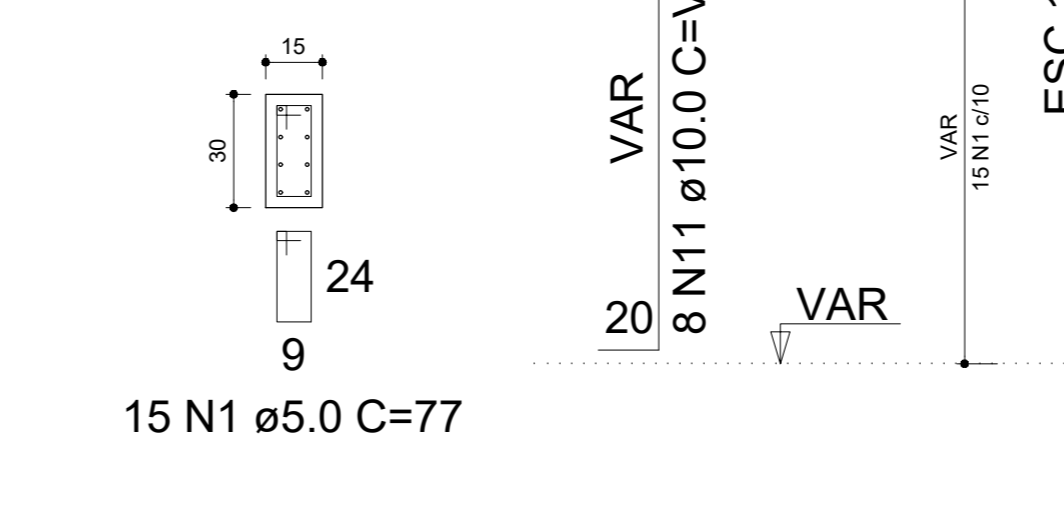
FUNDAÇÃO - L1  
ESC 1:20



15 N1 ø5.0 C=77  
15 N2 ø5.0 C=24

P18

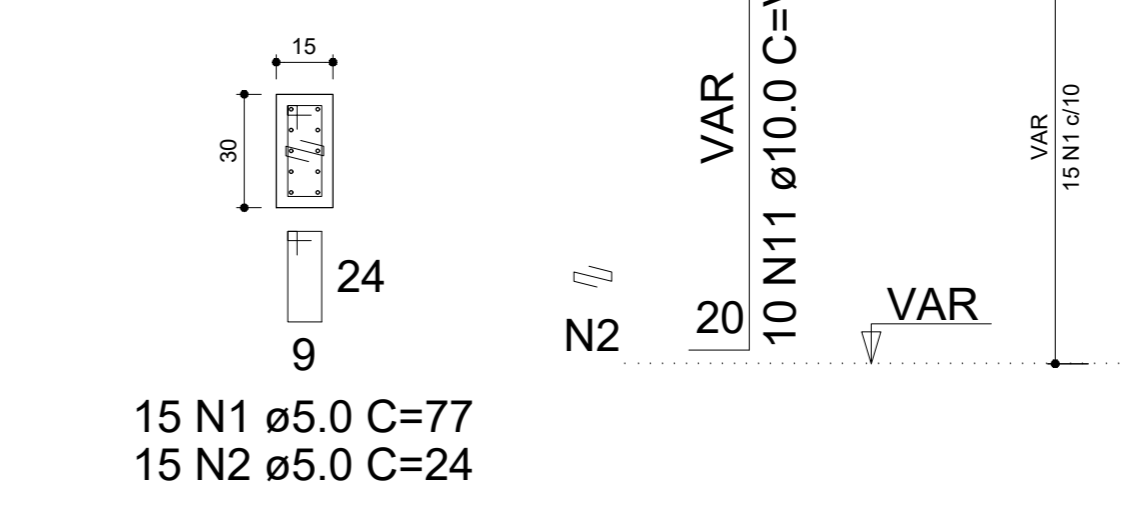
FUNDAÇÃO - L1  
ESC 1:20



15 N1 ø5.0 C=77

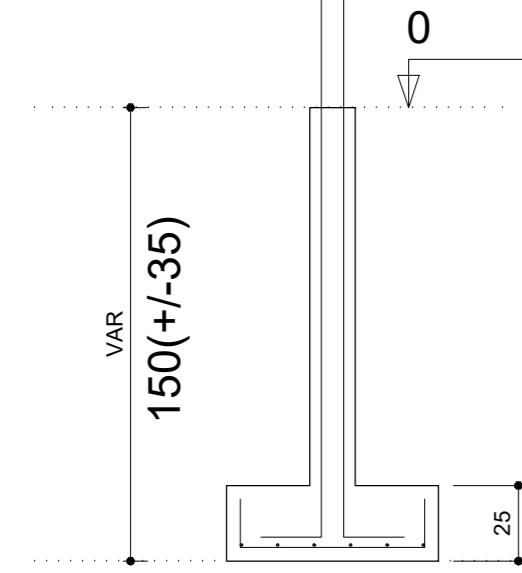
P25

FUNDAÇÃO - L1  
ESC 1:20



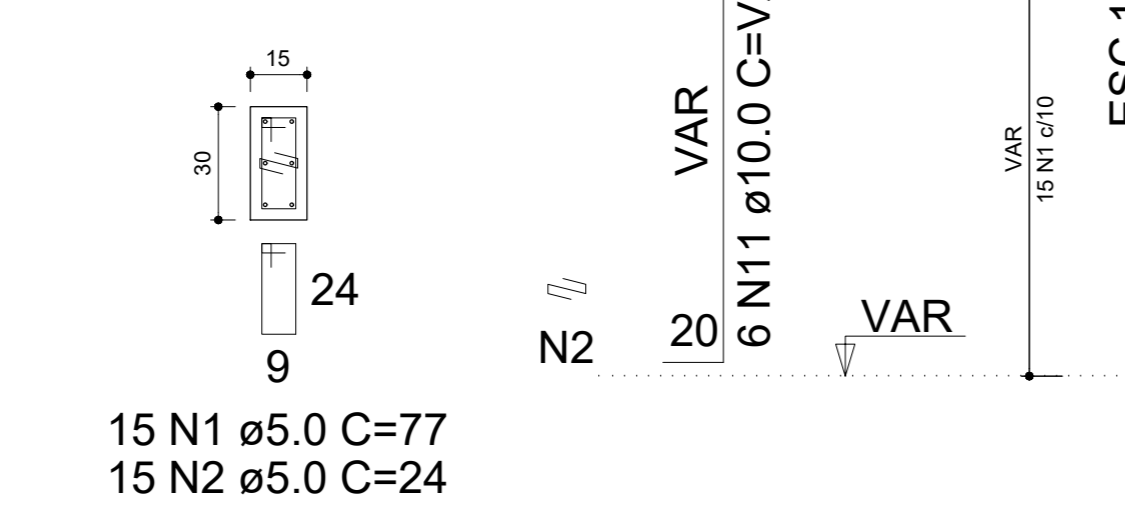
15 N1 ø5.0 C=77  
15 N2 ø5.0 C=24

CORTE  
ESC 1:25



P13=P23

FUNDAÇÃO - L1  
ESC 1:20



15 N1 ø5.0 C=77  
15 N2 ø5.0 C=24

P6=P20=P22

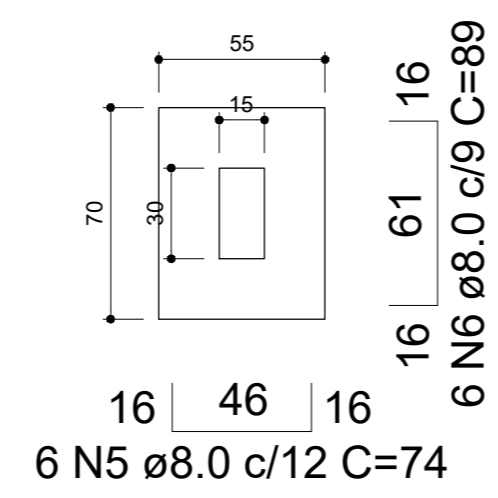
FUNDAÇÃO - L1  
ESC 1:20



15 N1 ø5.0 C=77

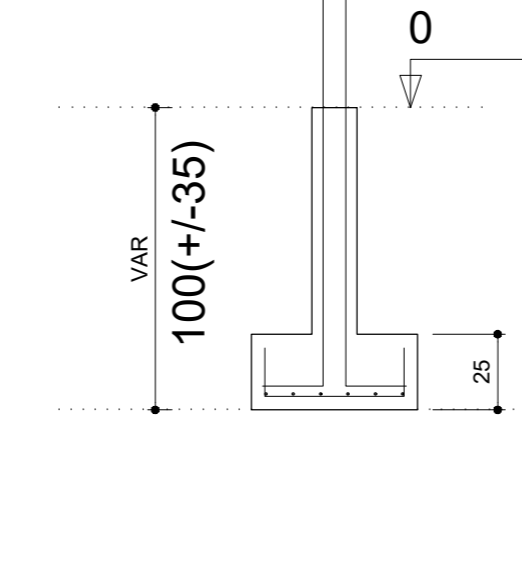
S12

PLANTA  
ESC 1:25



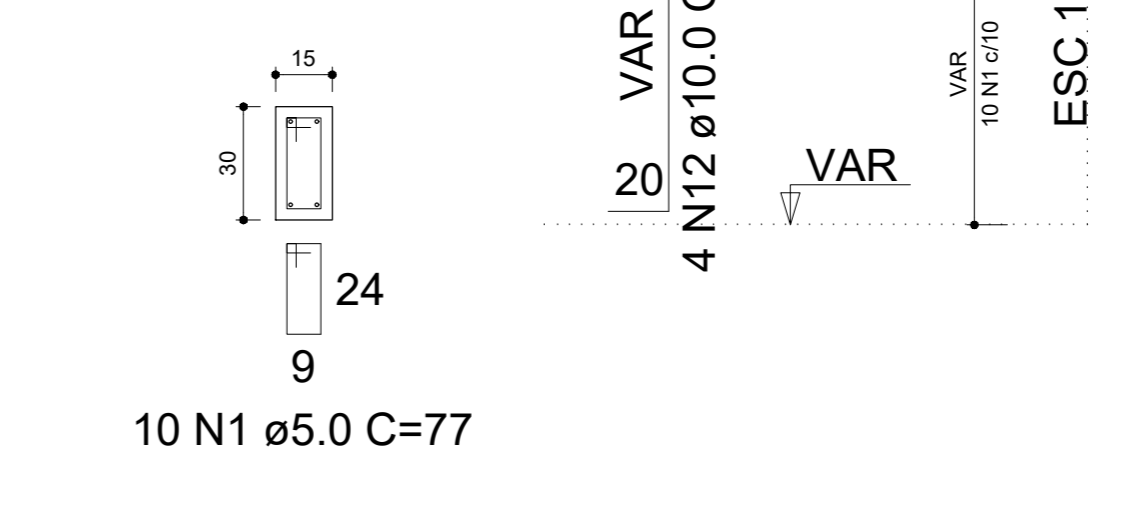
Solo compactado sobre a sapata  
peso específico > 1600.00 kgf/m³

CORTE  
ESC 1:25



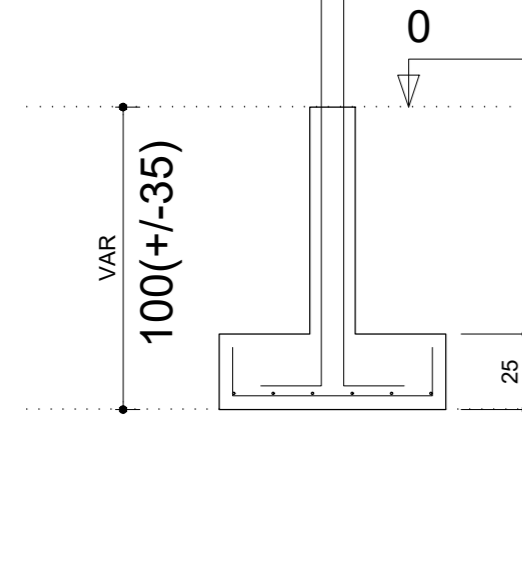
P12

FUNDAÇÃO - L1  
ESC 1:20



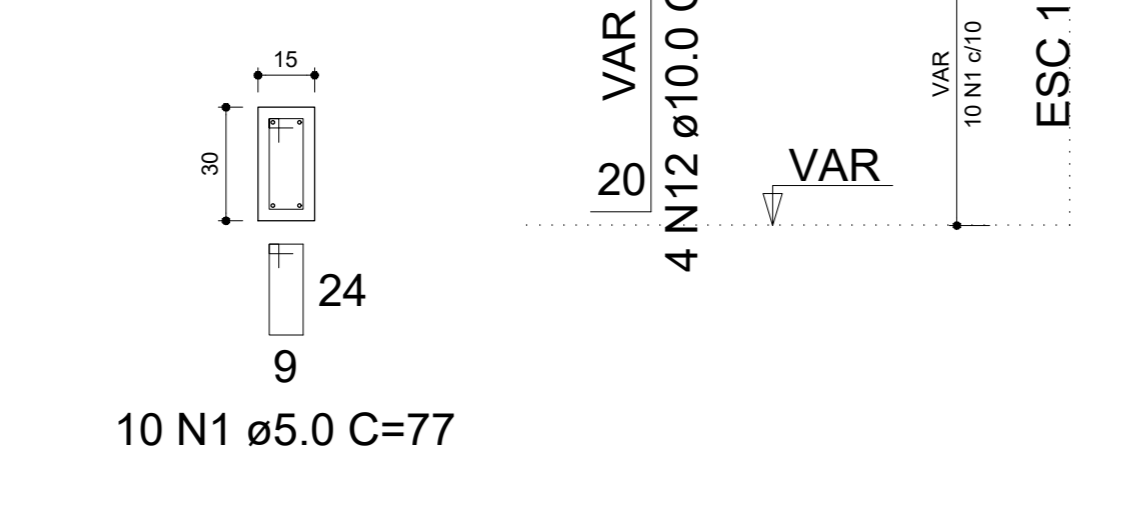
10 N1 ø5.0 C=77

CORTE  
ESC 1:25



P14=P15

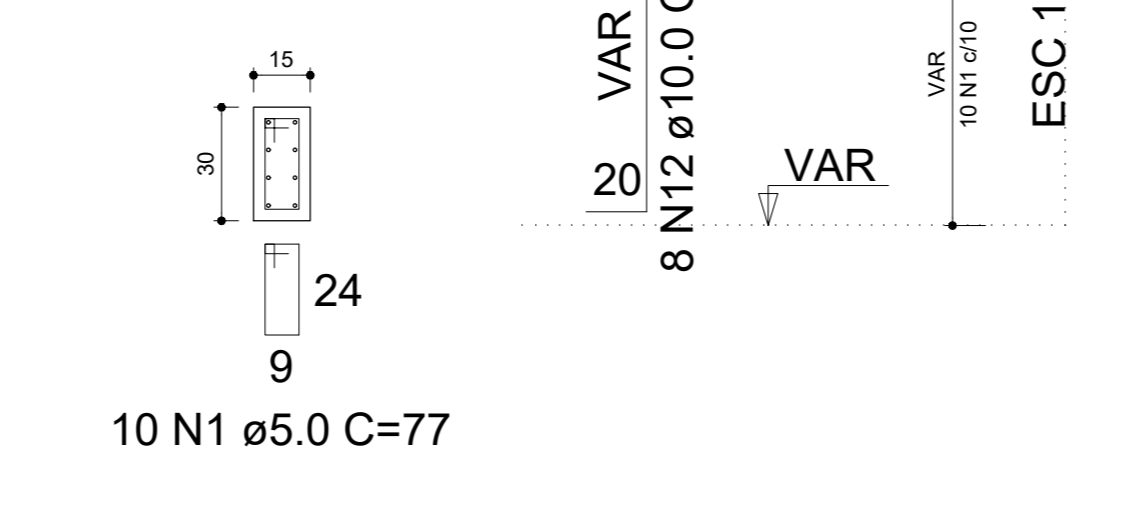
FUNDAÇÃO - L1  
ESC 1:20



10 N1 ø5.0 C=77

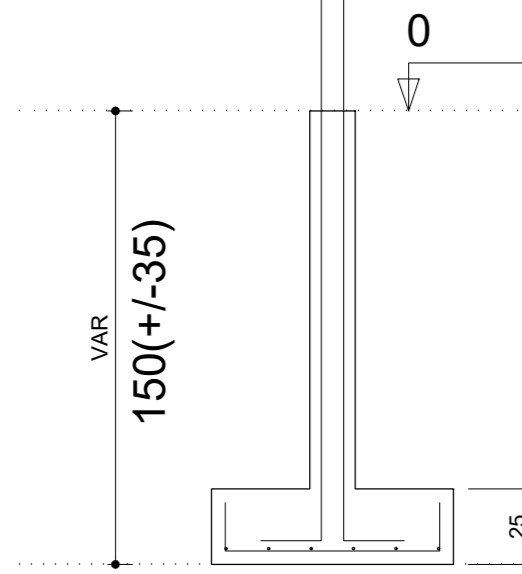
P17

FUNDAÇÃO - L1  
ESC 1:20



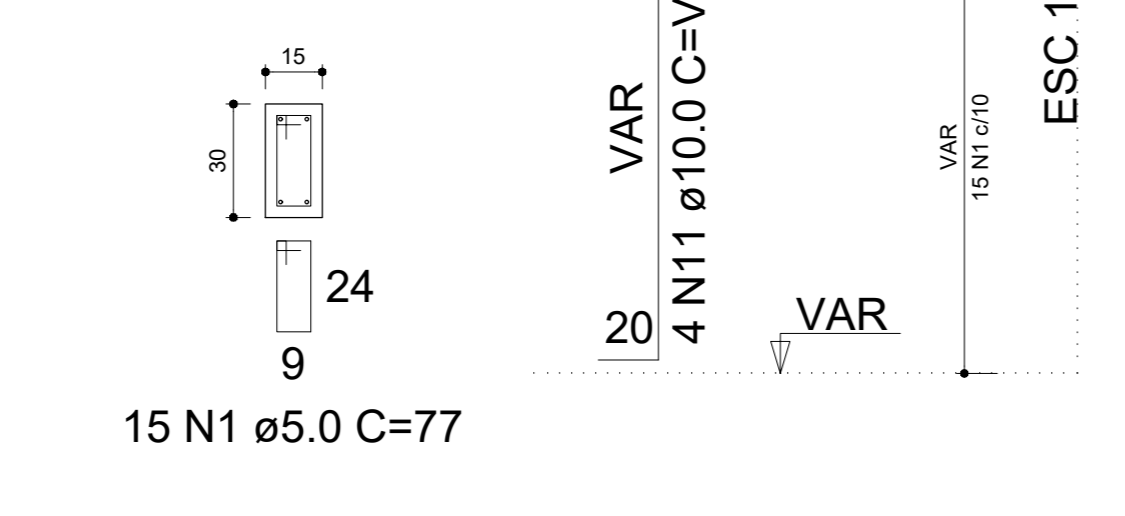
10 N1 ø5.0 C=77

CORTE  
ESC 1:25



P21

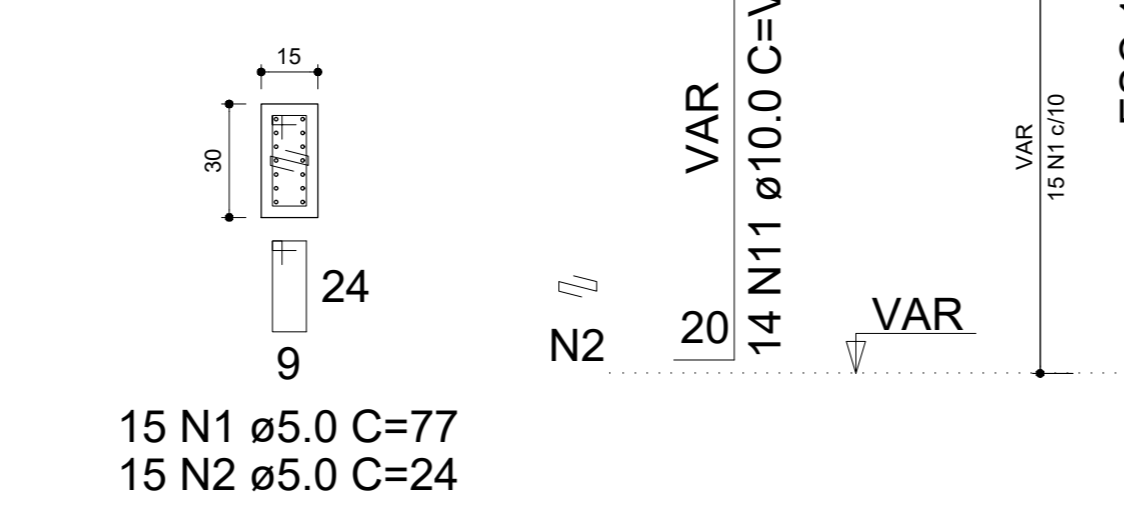
FUNDAÇÃO - L1  
ESC 1:20



15 N1 ø5.0 C=77

P24

FUNDAÇÃO - L1  
ESC 1:20



15 N1 ø5.0 C=77  
15 N2 ø5.0 C=24

RELAÇÃO DO AÇO

15xP1	3xP6	2xP10
P12	2xP13	2xP14
P17	P18	P21
P24	P25	19xS10
S12	5xS13	3xS17
2xS24		

AÇO	N	DIAM (mm)	QUANT	C.UNIT (cm)	C.TOTAL (cm)
CA60	1	5.0	430	77	33110
CA50	2	5.0	90	24	2160
	3	8.0	114	79	9006
	4	8.0	135	94	12690
	5	8.0	6	74	444
	6	8.0	36	89	3204
	7	8.0	30	104	3120
	8	8.0	18	109	1962
	9	8.0	14	99	1386
	10	8.0	12	114	1368
	11	10.0	132	VAR	VAR
	12	10.0	20	VAR	VAR

RESUMO DO AÇO

AÇO	DIAM (mm)	C.TOTAL (m)	PESO + 0% (kg)
CA50	8.0	331.8	130.9
CA60	10.0	297	183.1
	5.0	352.7	54.4
PESO TOTAL (kg)			
CA50	314.1		
CA60	54.4		

Volume de concreto (C-25) = 5.80 m³  
Área de forma = 60.25 m²

PROJETO:

ANEXO CENTRO EDUCACIONAL  
REFORMA E AMPLIAÇÃO

TÍTULO:

PROJETO ESTRUTURAL

ENDEREÇO: RUA NELSON DAVID RIBEIRO	OBJETO: SAPATAS
MUNICÍPIO: IBIRAPITANGA - BA	
RESPONSÁVEL TÉCNICO: ADEBALDO RODRIGUES DOS SANTOS ENG. CIVIL CREA: 18459/D	ART: PRANCHA:
ARQUIVO: ESC: INDICADA	DATA: JUNHO/2022
	EST05