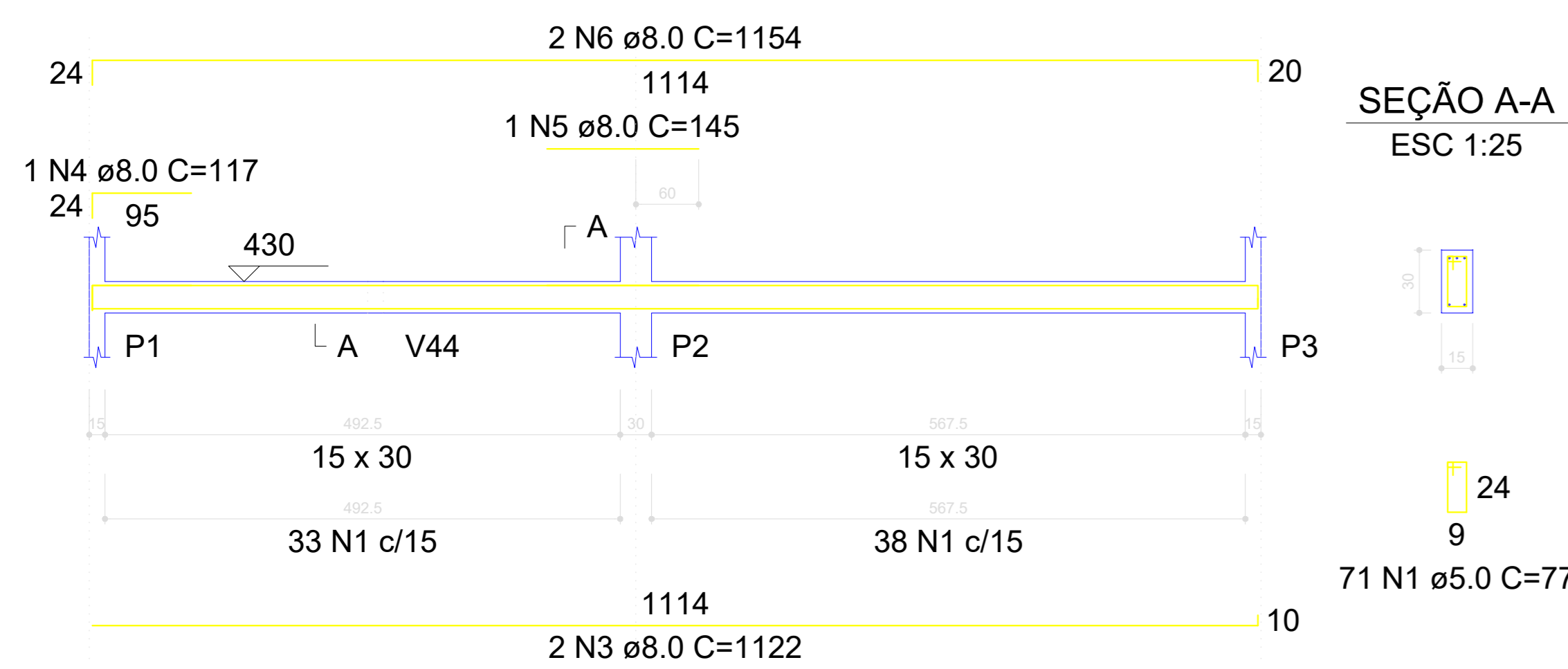


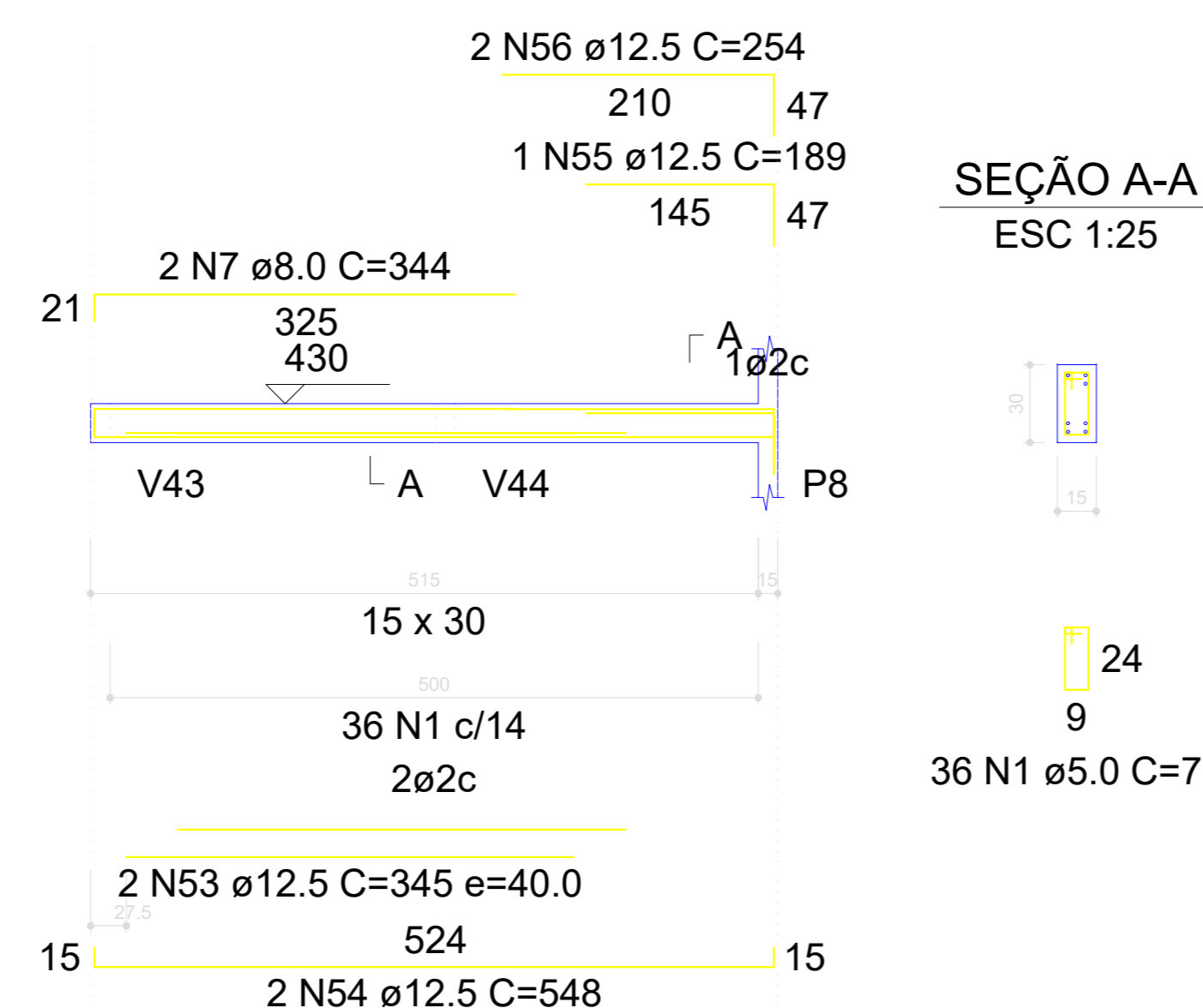
V1

ESC 1:50



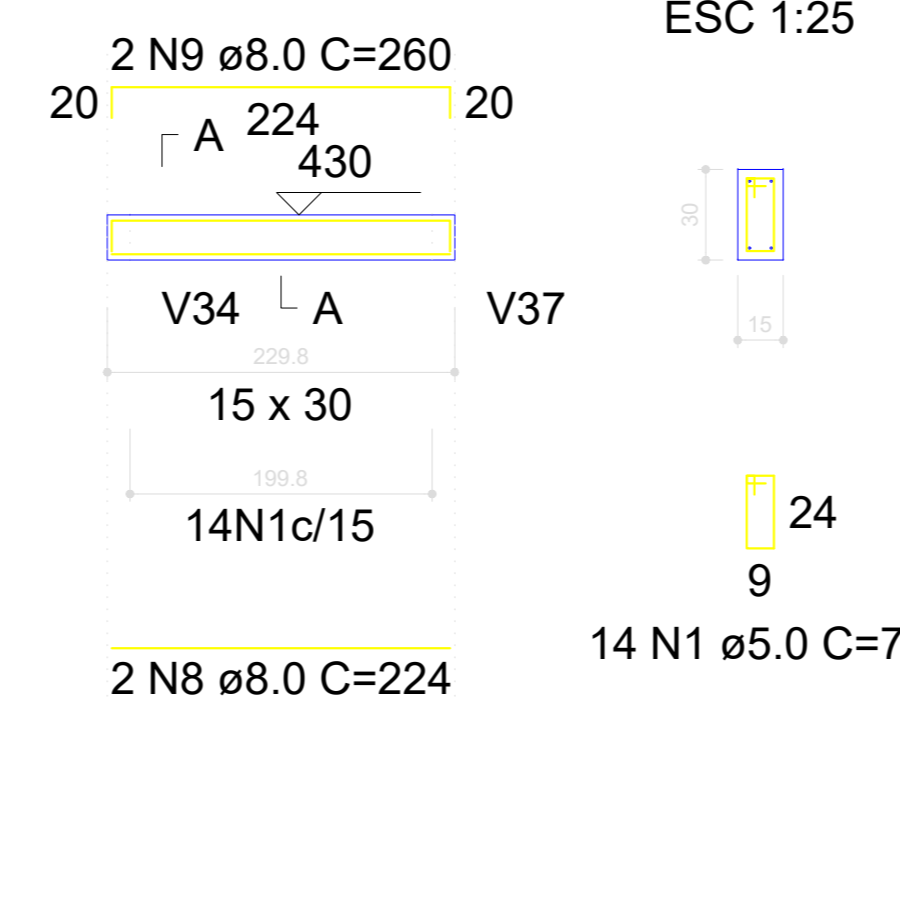
V2

ESC 1:50



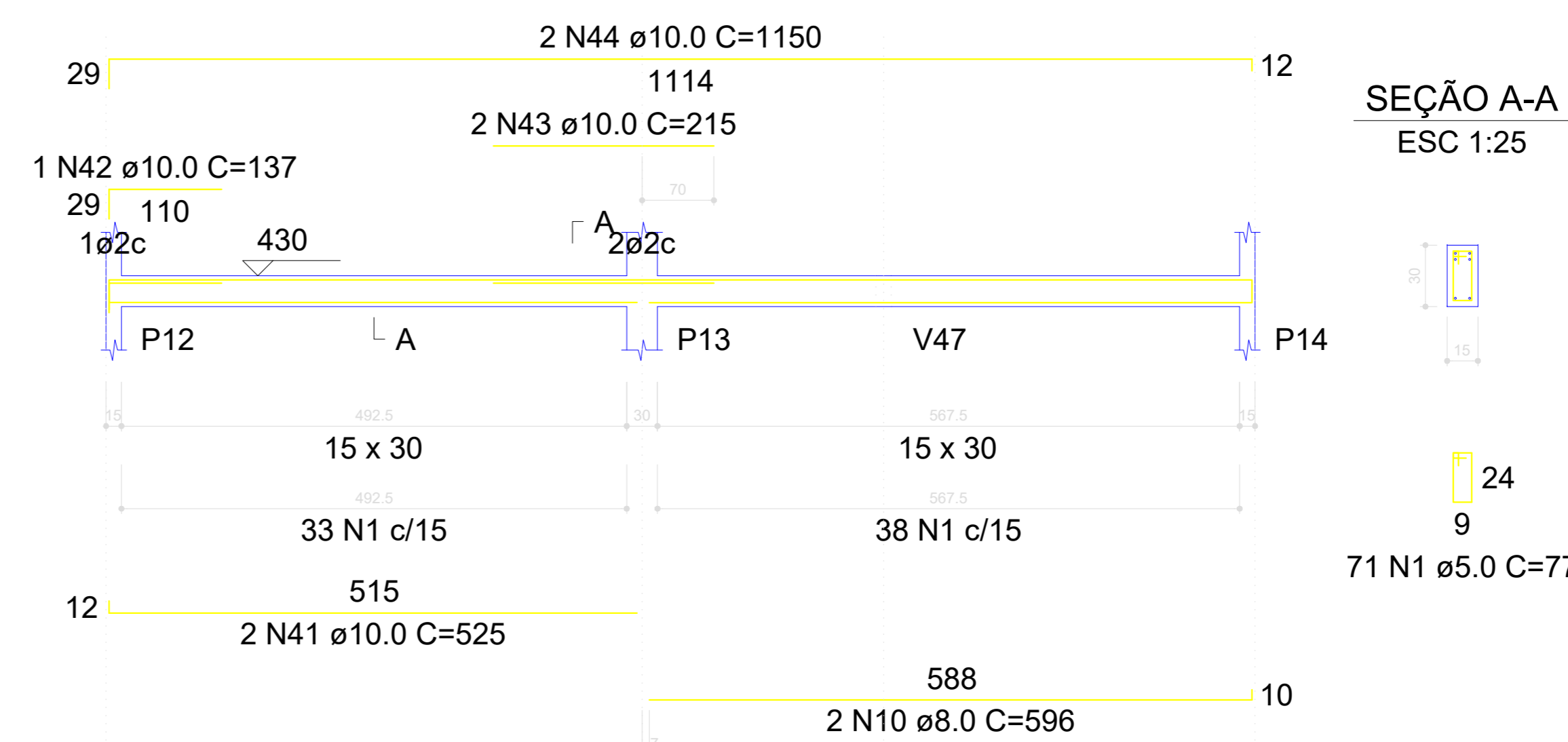
V3

ESC 1:50



V4

ESC 1:50

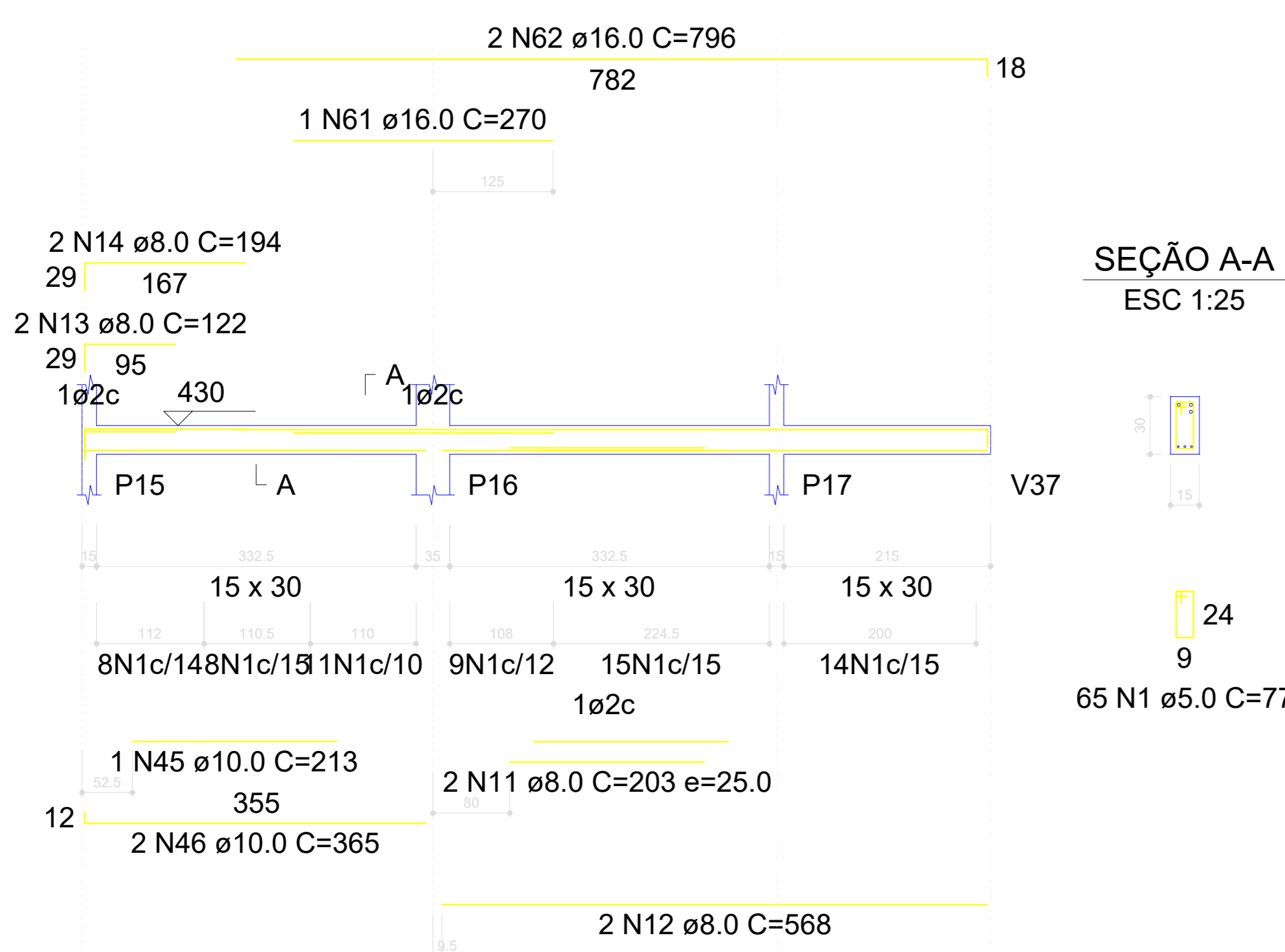


RELAÇÃO DO AÇO

AÇO	N	DIAM (mm)	QUANT	C.UNIT (cm)	C.TOTAL (cm)
CA60	1	5.0	616	77	47432
CA50	2	5.0	24	61	1464
	3	8.0	2	1122	2244
	4	8.0	1	117	117
	5	8.0	1	145	145
	6	8.0	2	1154	2308
	7	8.0	2	344	688
	8	8.0	6	224	1344
	9	8.0	6	260	1560
	10	8.0	2	596	1192
	11	8.0	2	203	406
	12	8.0	2	568	1136
	13	8.0	2	122	244
	14	8.0	2	194	388
	15	8.0	4	380	1520
	16	8.0	4	400	1600
	17	8.0	2	165	330
	18	8.0	2	187	374
	19	8.0	1	140	140
	20	8.0	2	372	744
	21	8.0	1	101	101
	22	8.0	2	413	826
	23	8.0	1	195	195
	24	8.0	1	198	198
	25	8.0	3	745	2235
	26	8.0	2	157	314
	27	8.0	2	161	322
	28	8.0	2	164	328
	29	8.0	2	192	384
	30	8.0	2	450	900
	31	8.0	2	464	928
	32	8.0	2	231	462
	33	8.0	2	329	658
	34	8.0	2	763	1526
	35	8.0	1	222	222
	36	8.0	1	403	403
	37	8.0	2	740	1480
	38	8.0	2	639	1278
	39	8.0	2	160	320
	40	8.0	2	684	1368
	41	10.0	2	525	1050
	42	10.0	1	137	137
	43	10.0	2	215	430
	44	10.0	2	1150	2300
	45	10.0	1	213	213
	46	10.0	2	365	730
	47	10.0	2	270	540
	48	10.0	1	164	164
	49	10.0	2	309	618
	50	10.0	2	416	832
	51	10.0	1	144	144
	52	10.0	2	767	1534
	53	12.5	2	345	690
	54	12.5	2	548	1096
	55	12.5	1	189	189
	56	12.5	2	254	508
	57	12.5	2	350	700
	58	12.5	2	711	1422
	59	12.5	2	240	480
	60	12.5	2	789	1578
	61	16.0	1	270	270
	62	16.0	2	796	1592
	63	16.0	2	235	470
	64	16.0	2	320	640
	65	16.0	1	195	195
	66	16.0	2	275	550

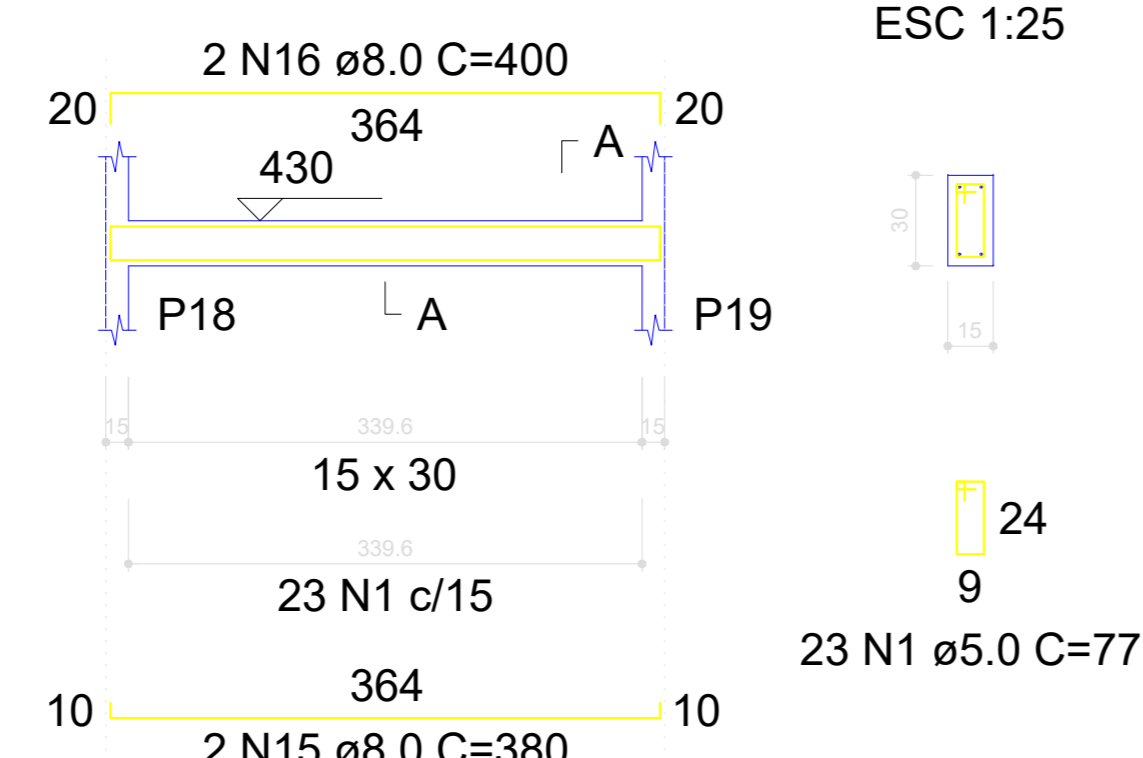
V5

ESC 1:50



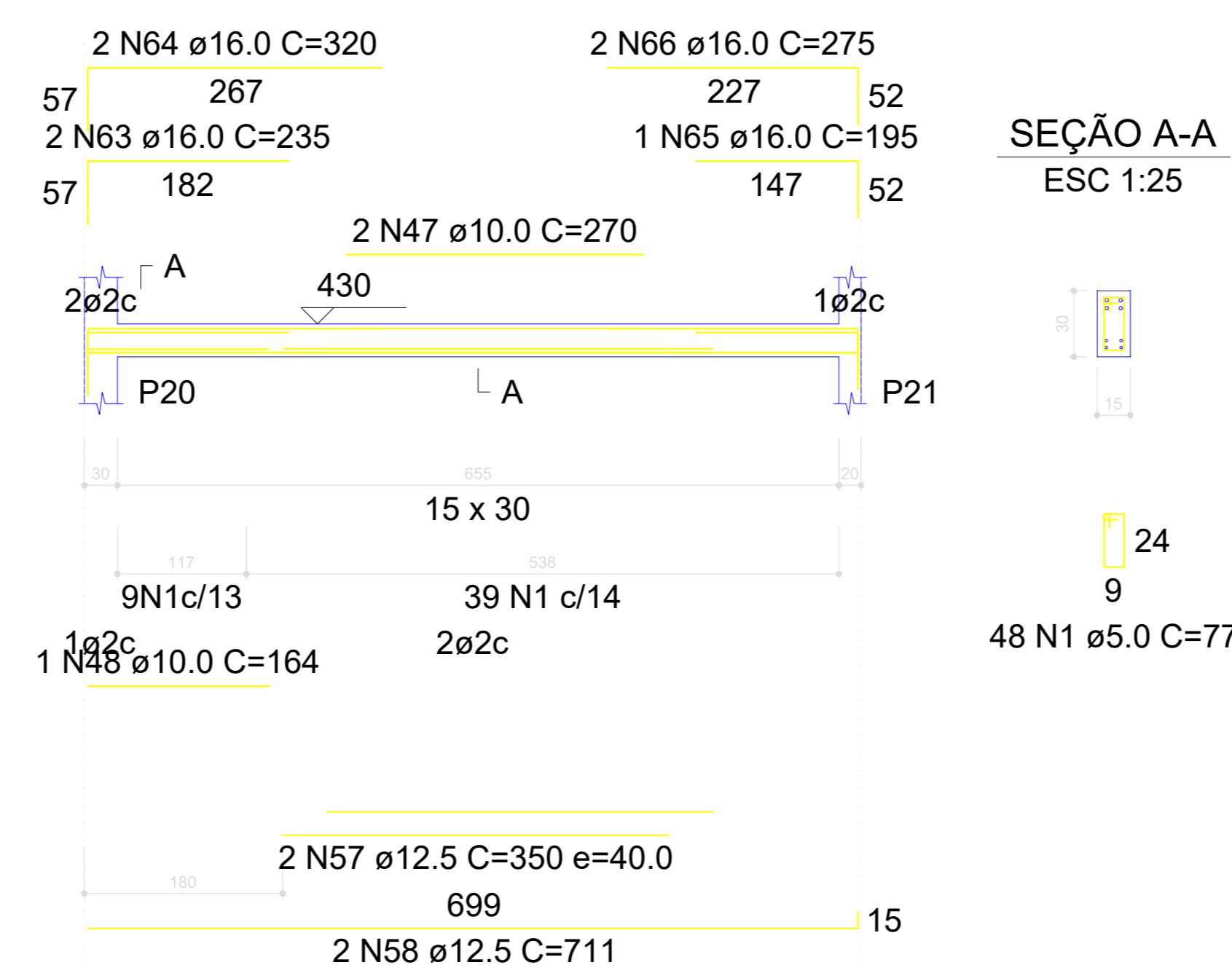
V6

ESC 1:50



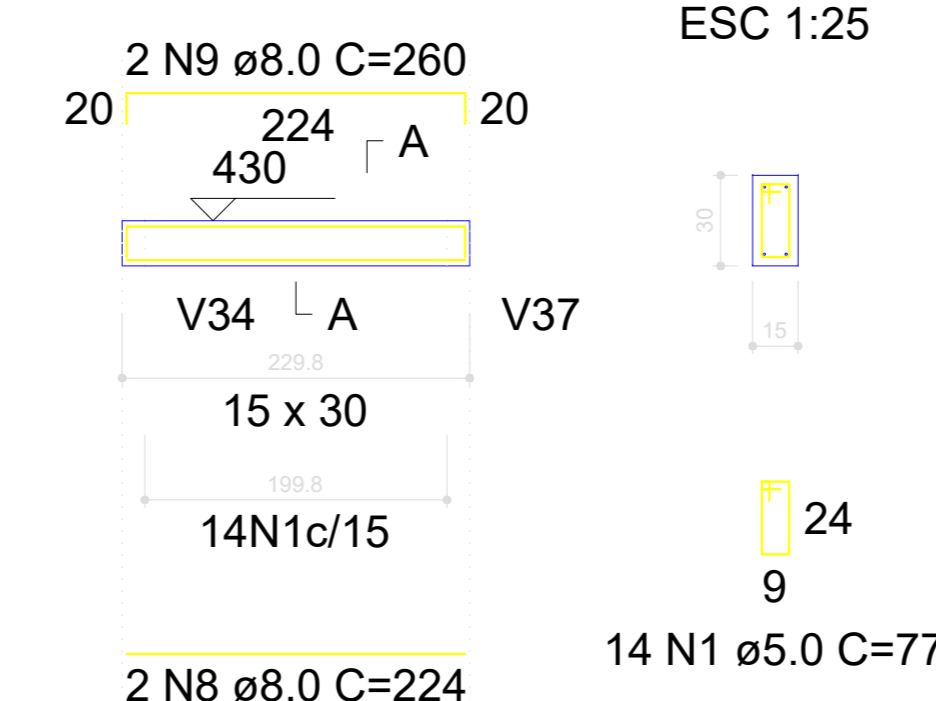
V7

ESC 1:50



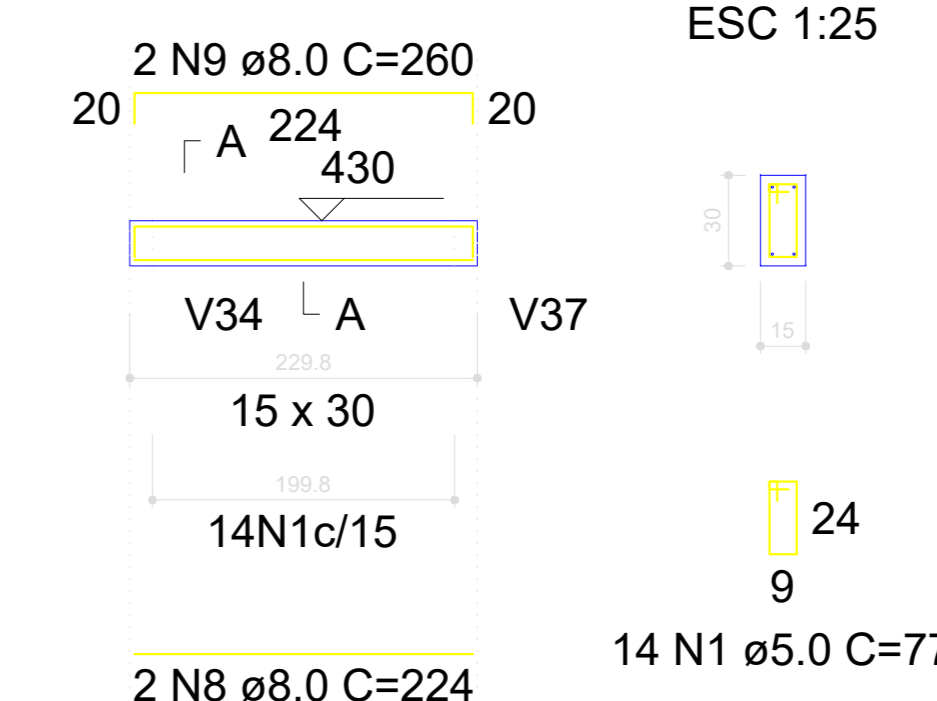
V8

ESC 1:50



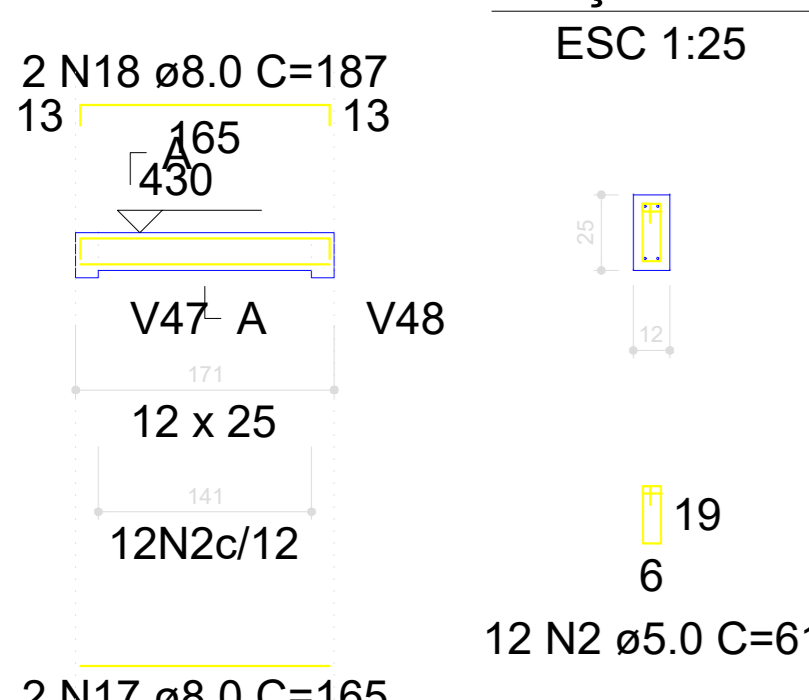
V9

ESC 1:50



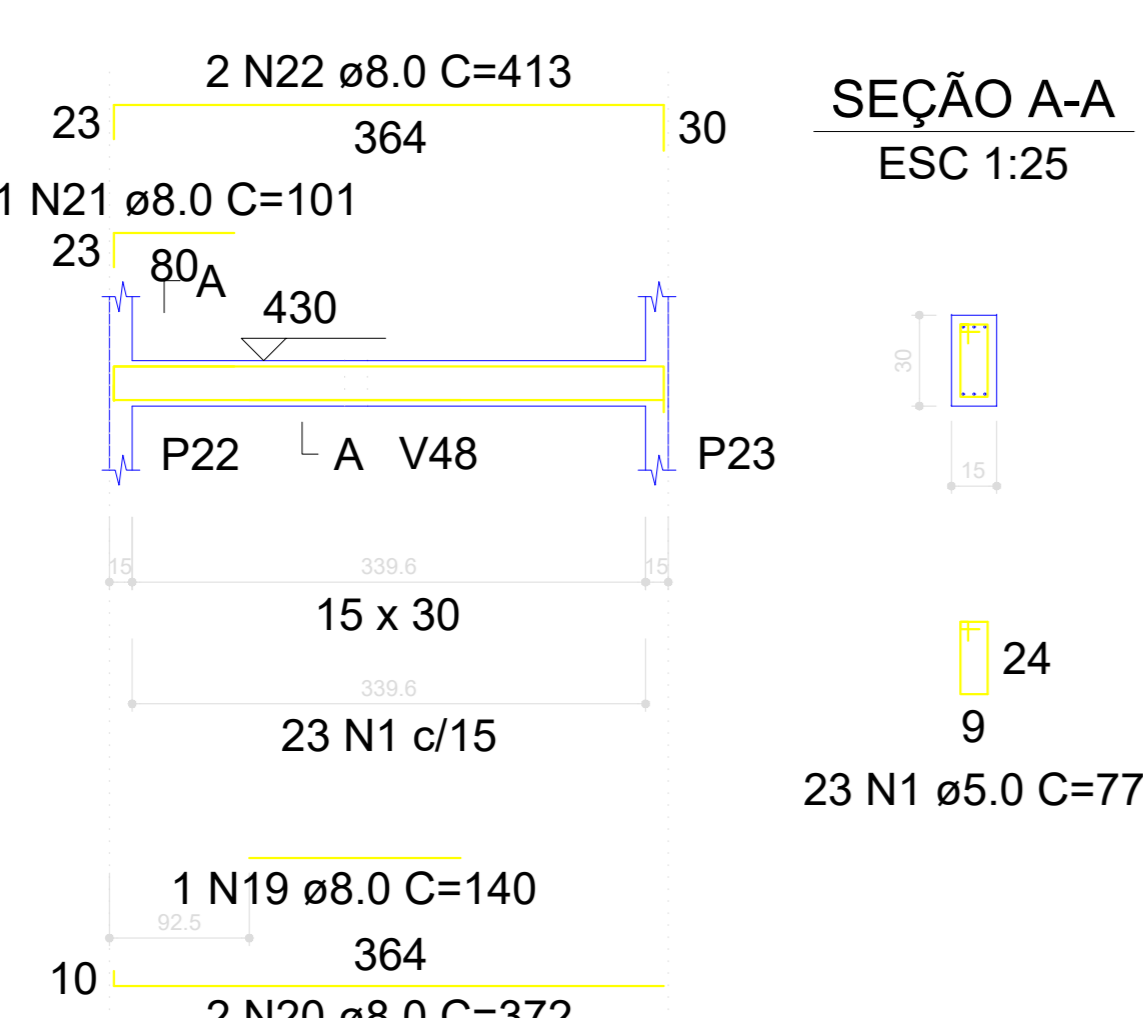
V10

ESC 1:50



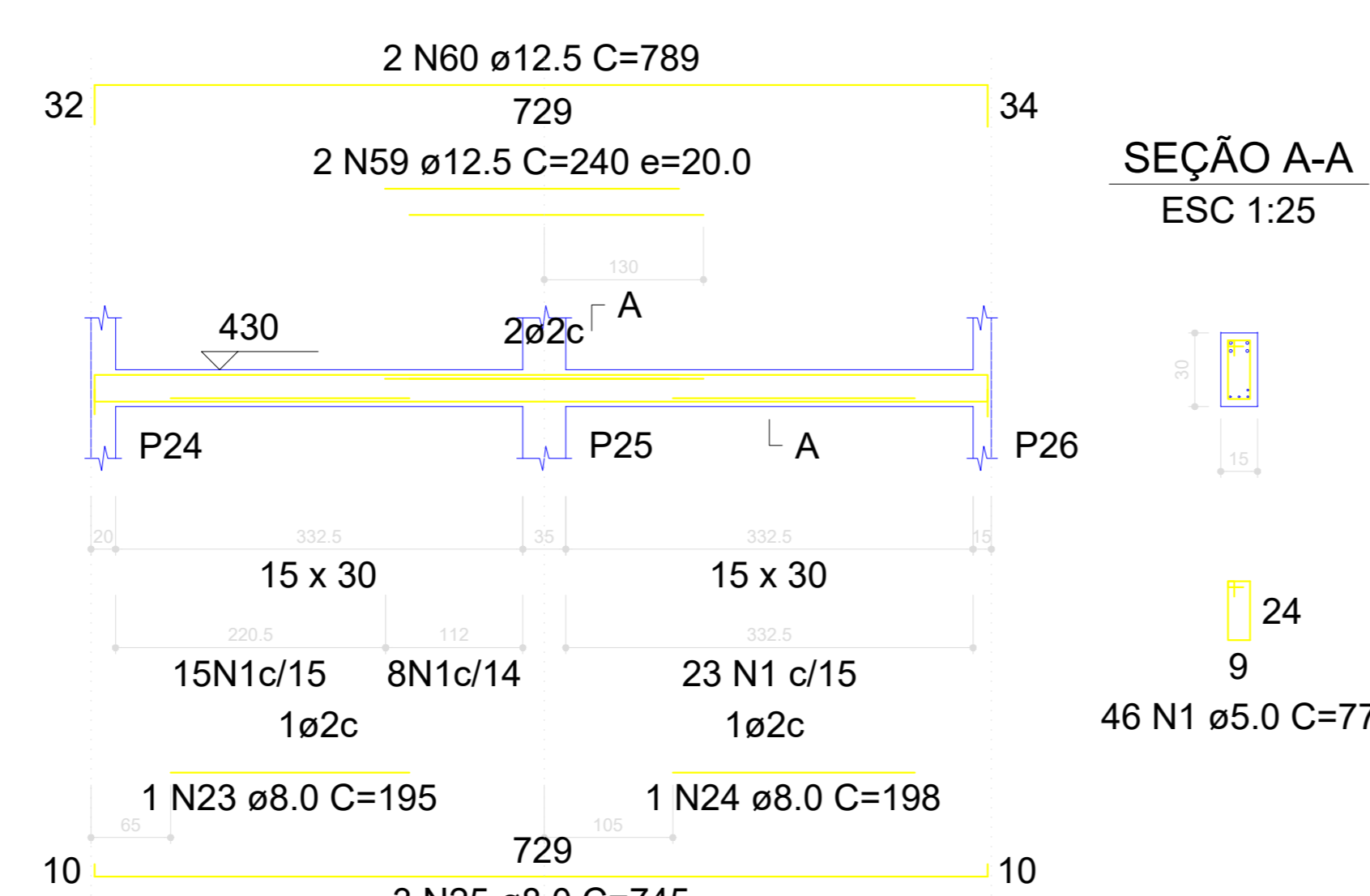
V11

ESC 1:50



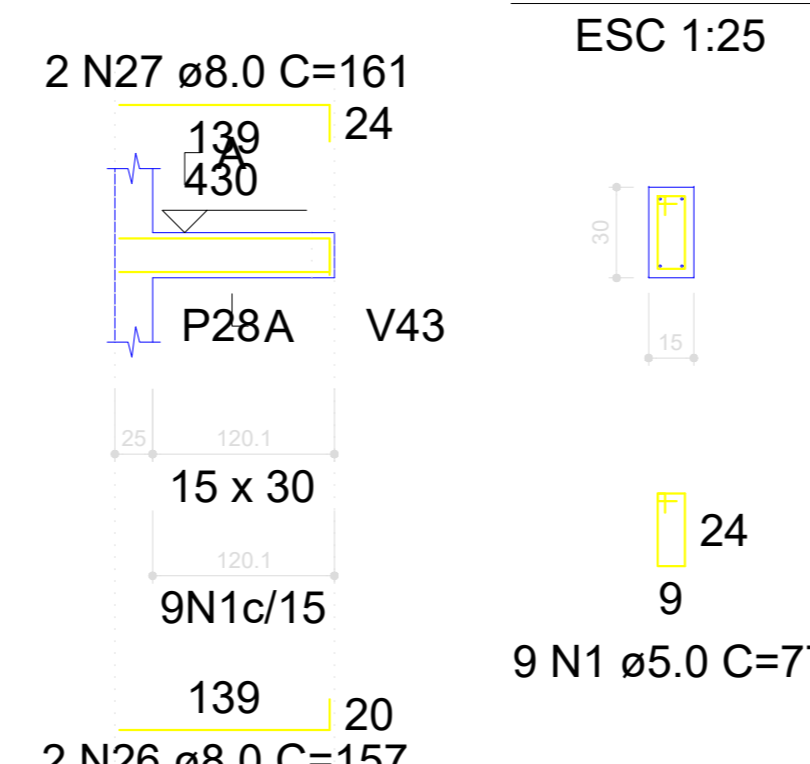
V12

ESC 1:50



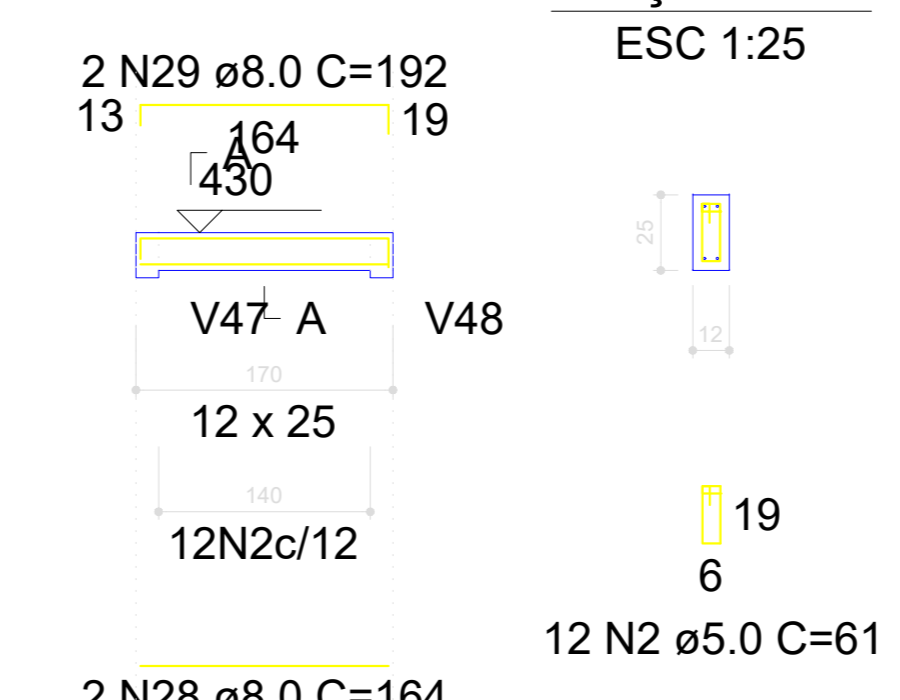
V13

ESC 1:50



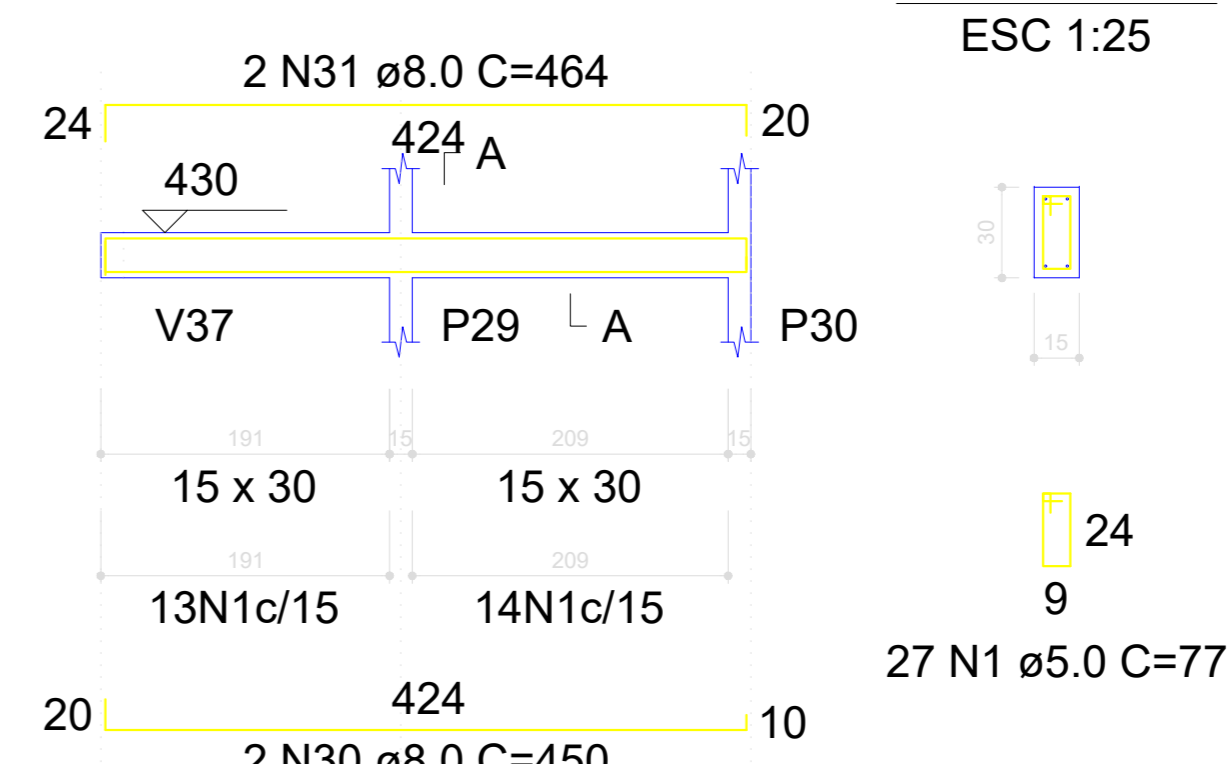
V14

ESC 1:50



V15

ESC 1:50



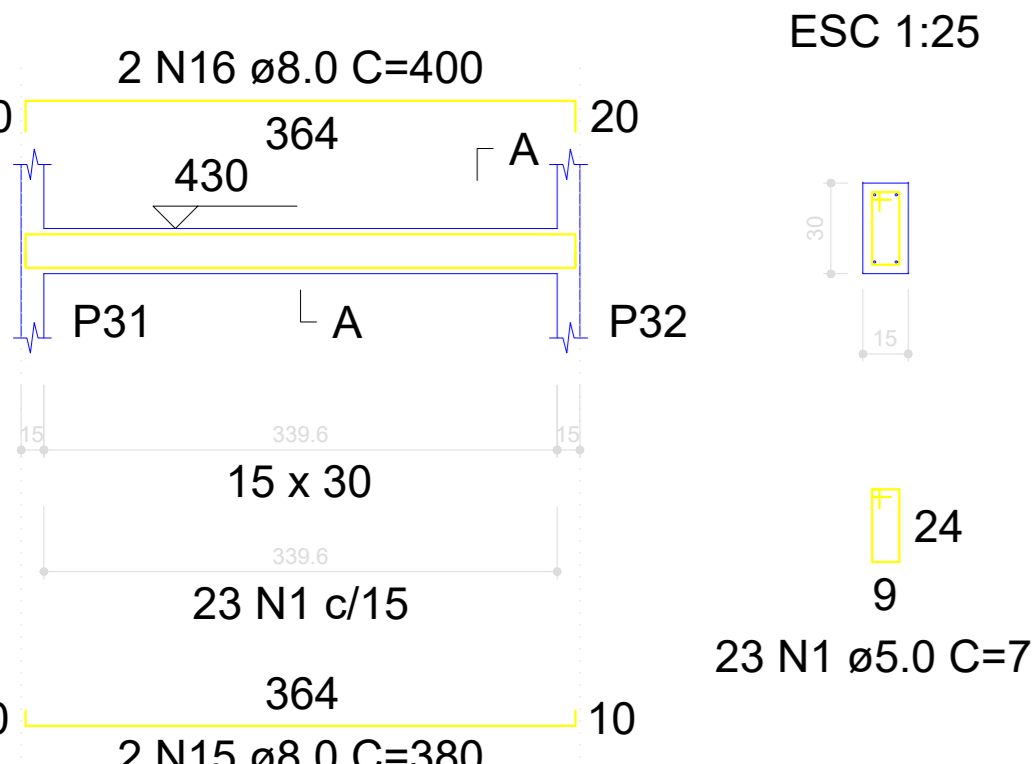
RESUMO DO AÇO

AÇO	DIAM (mm)	C.TOTAL (m)	PESO + 10% (kg)
CA50	8.0	309.3	134.2
	10.0	86.9	58.9
	12.5	66.6	70.6
	16.0	37.2	64.5
CA60	5.0	489	82.9
PESO TOTAL (kg)			
CA50		328.3	
CA60		82.9	

Volume de concreto (C-25) = 4.44 m³
Área de forma = 74.36 m²

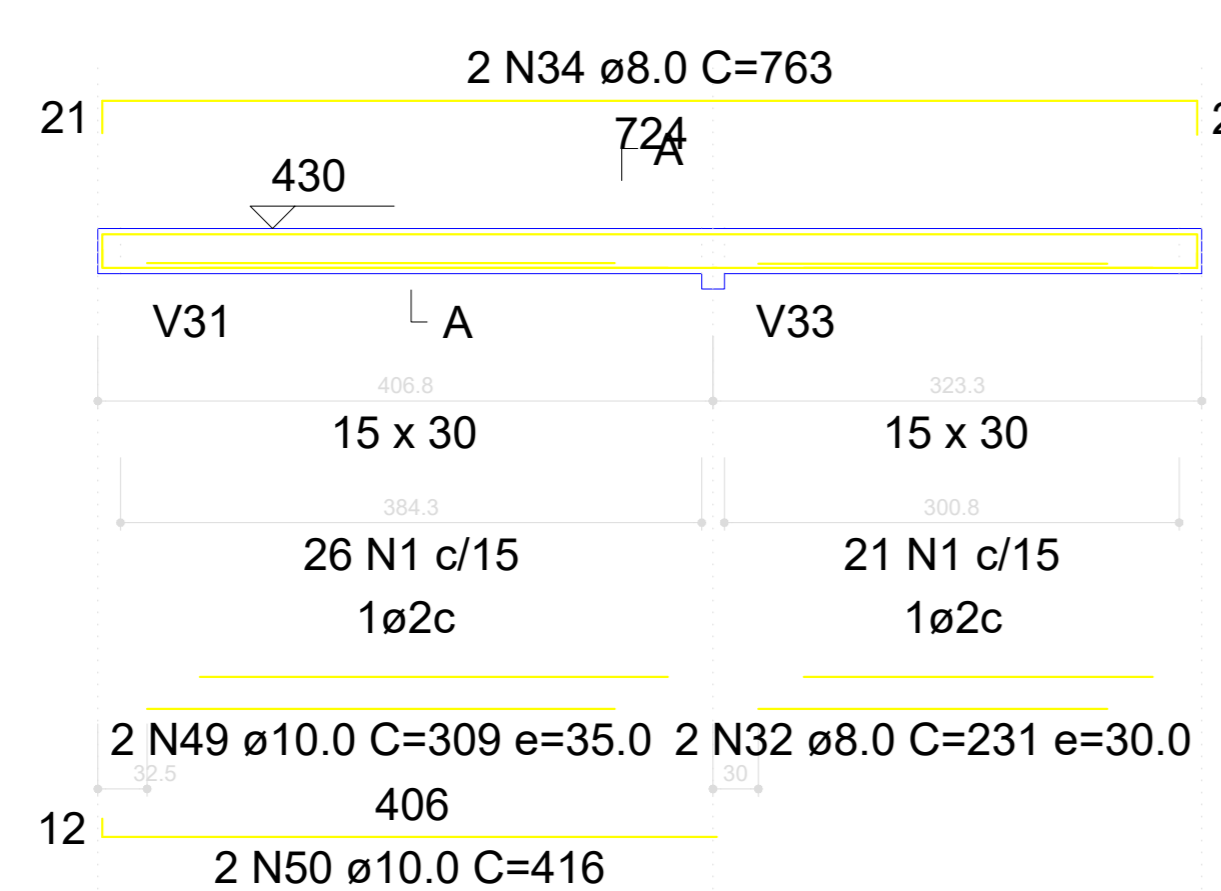
V16

ESC 1:50



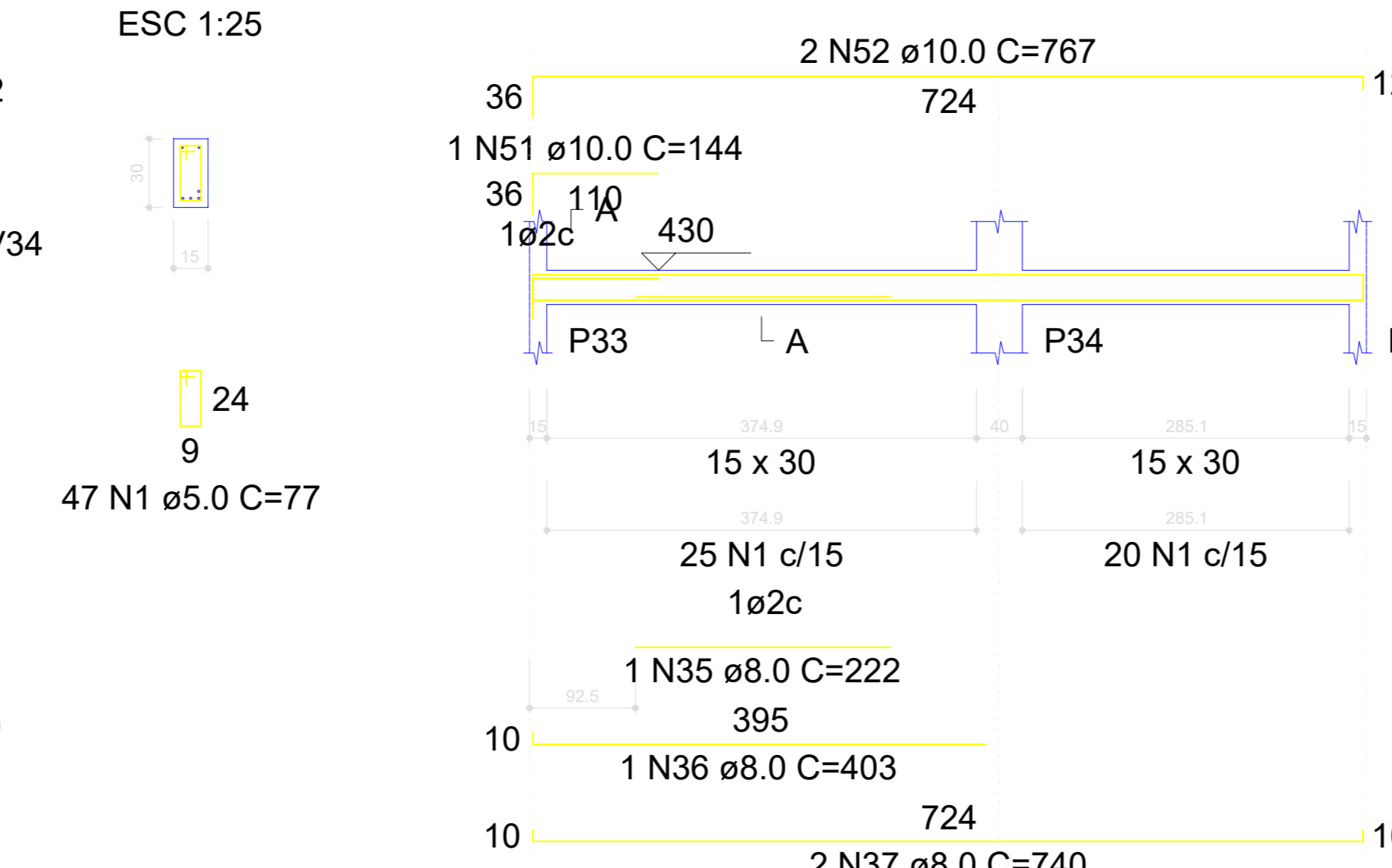
V17

ESC 1:50



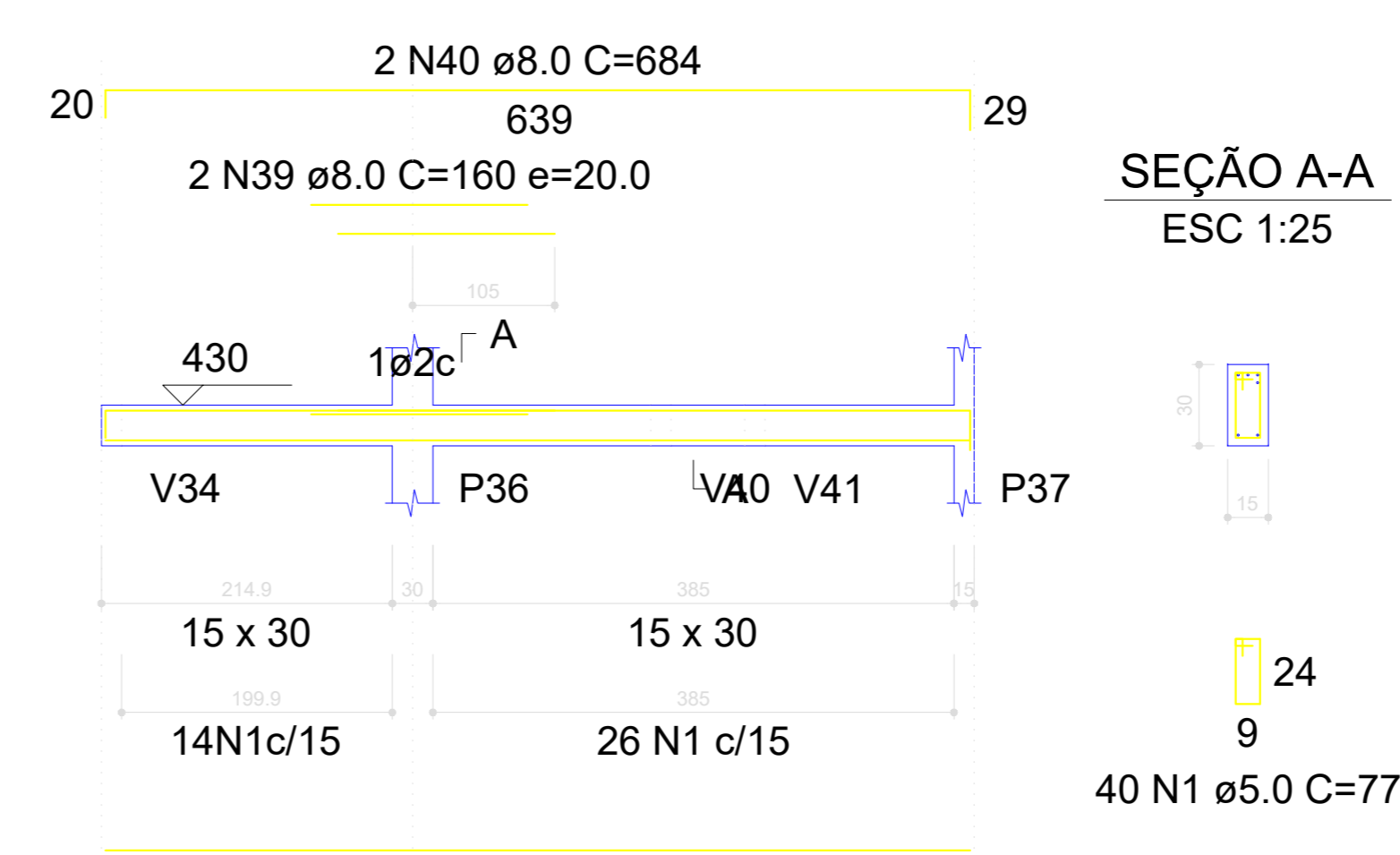
V18

ESC 1:50



V19

ESC 1:50



PROJETO: ESCOLA EDEVAL SUZART COUTINHO

TÍTULO: PROJETO ESTRUTURAL

ENDEREÇO: ZONA URBANA

MUNICÍPIO: IBIRAPITANGA - BA

RESPONSÁVEL TÉCNICO: ADEBALDO RODRIGUES DOS SANTOS

ARQUIVO: ESC. INDICADA

DATA: JULHO/2022

OBJETO: VIGAS

ART.:

PRANCHAS: EST12