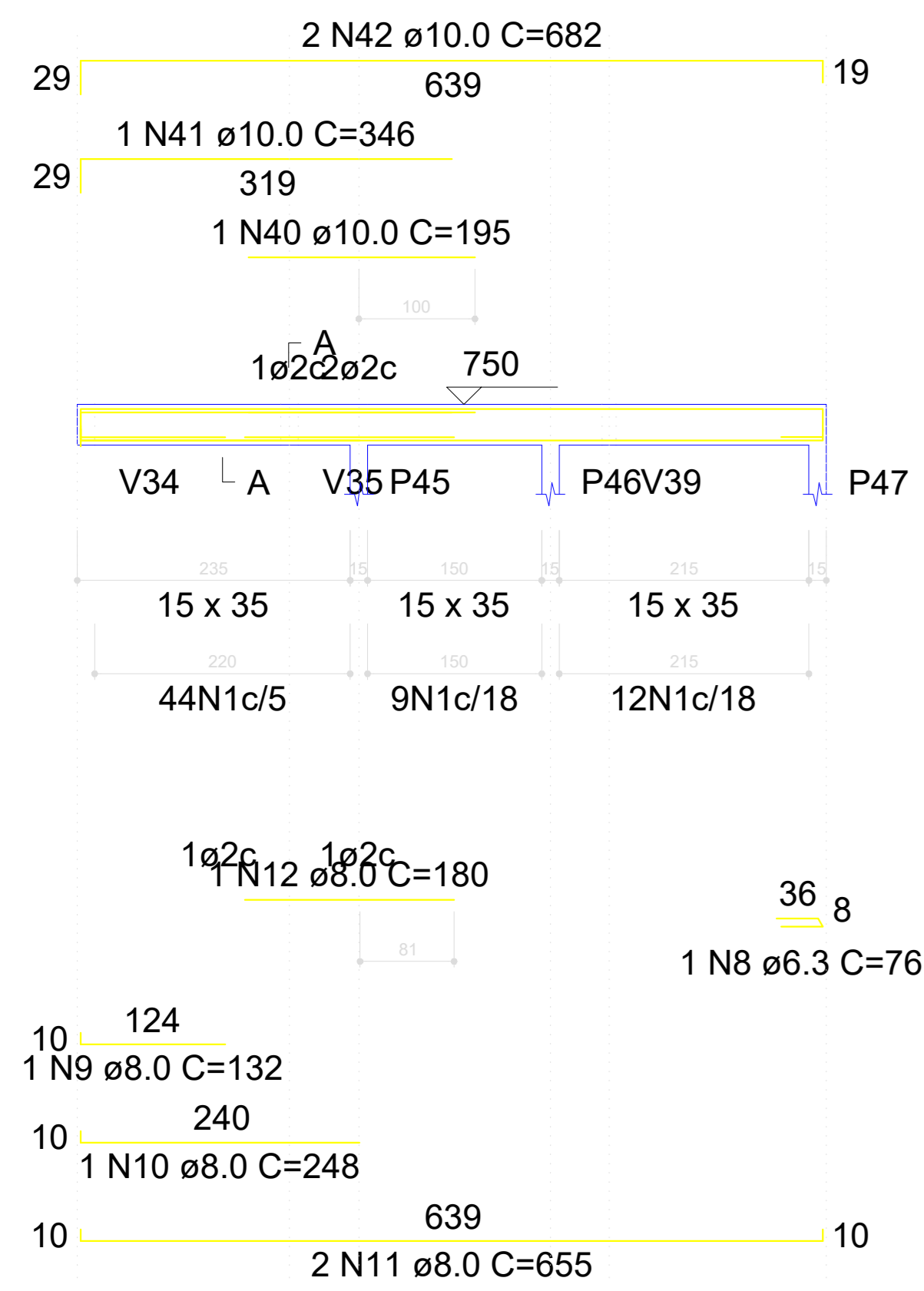


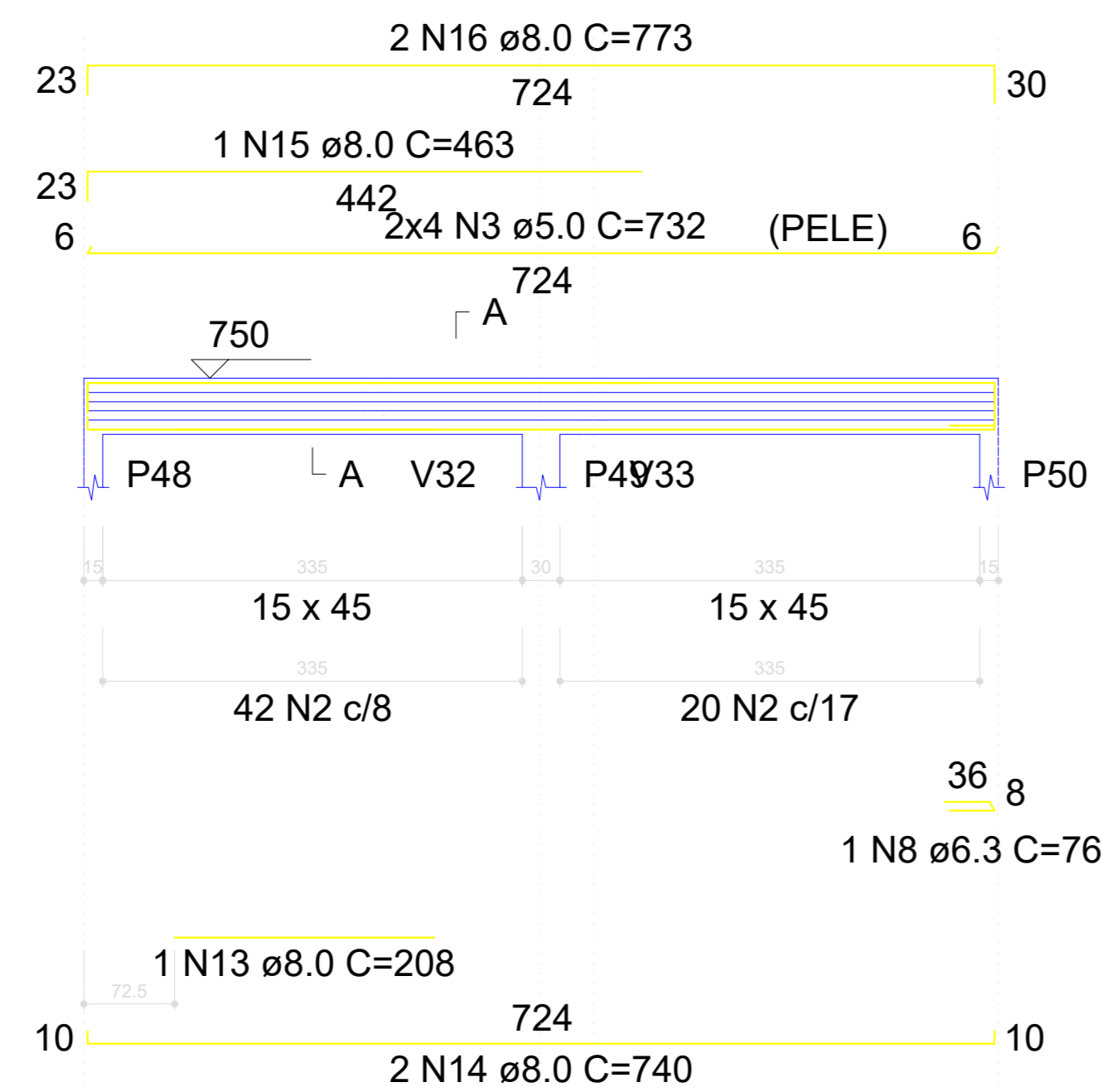
### V26

ESC 1:50



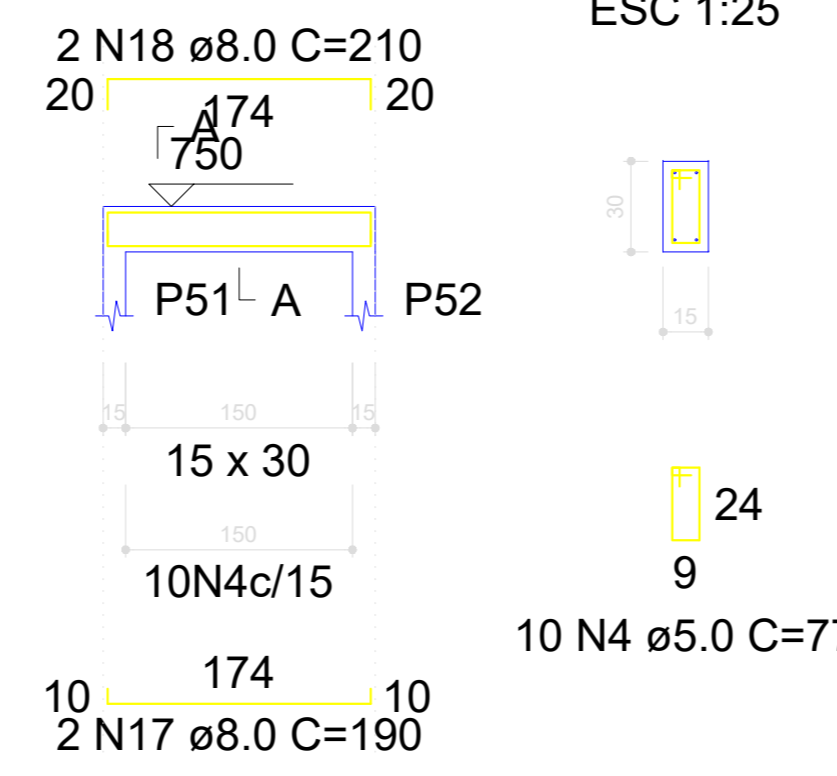
### V27

ESC 1:50



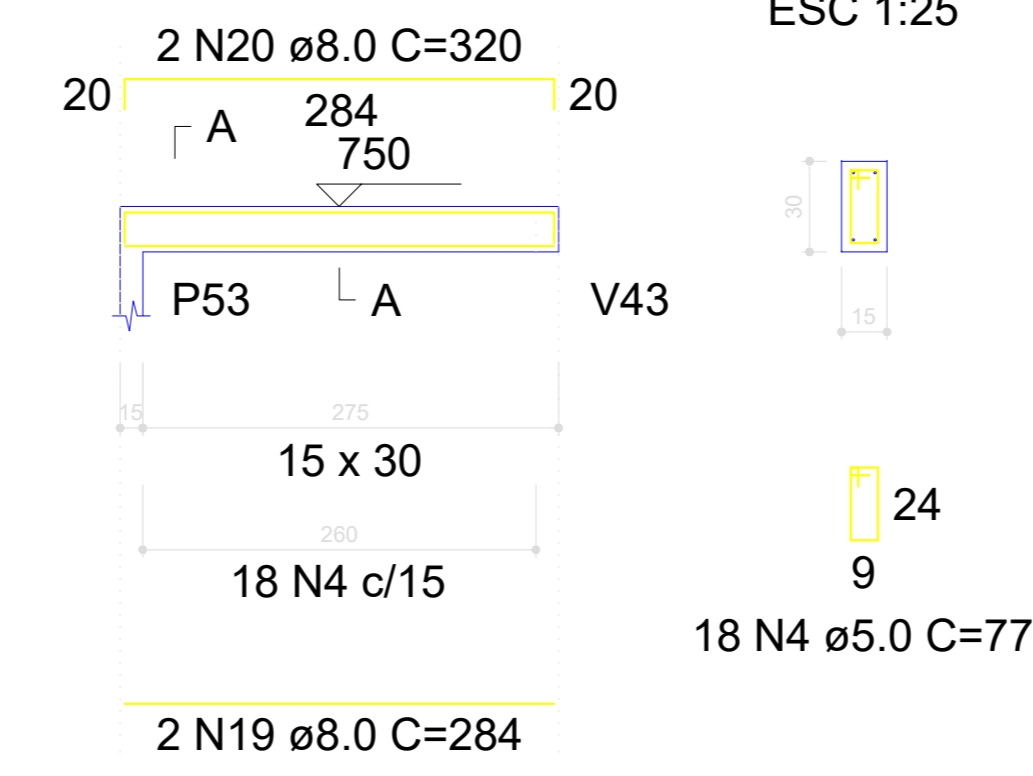
### V28

ESC 1:50



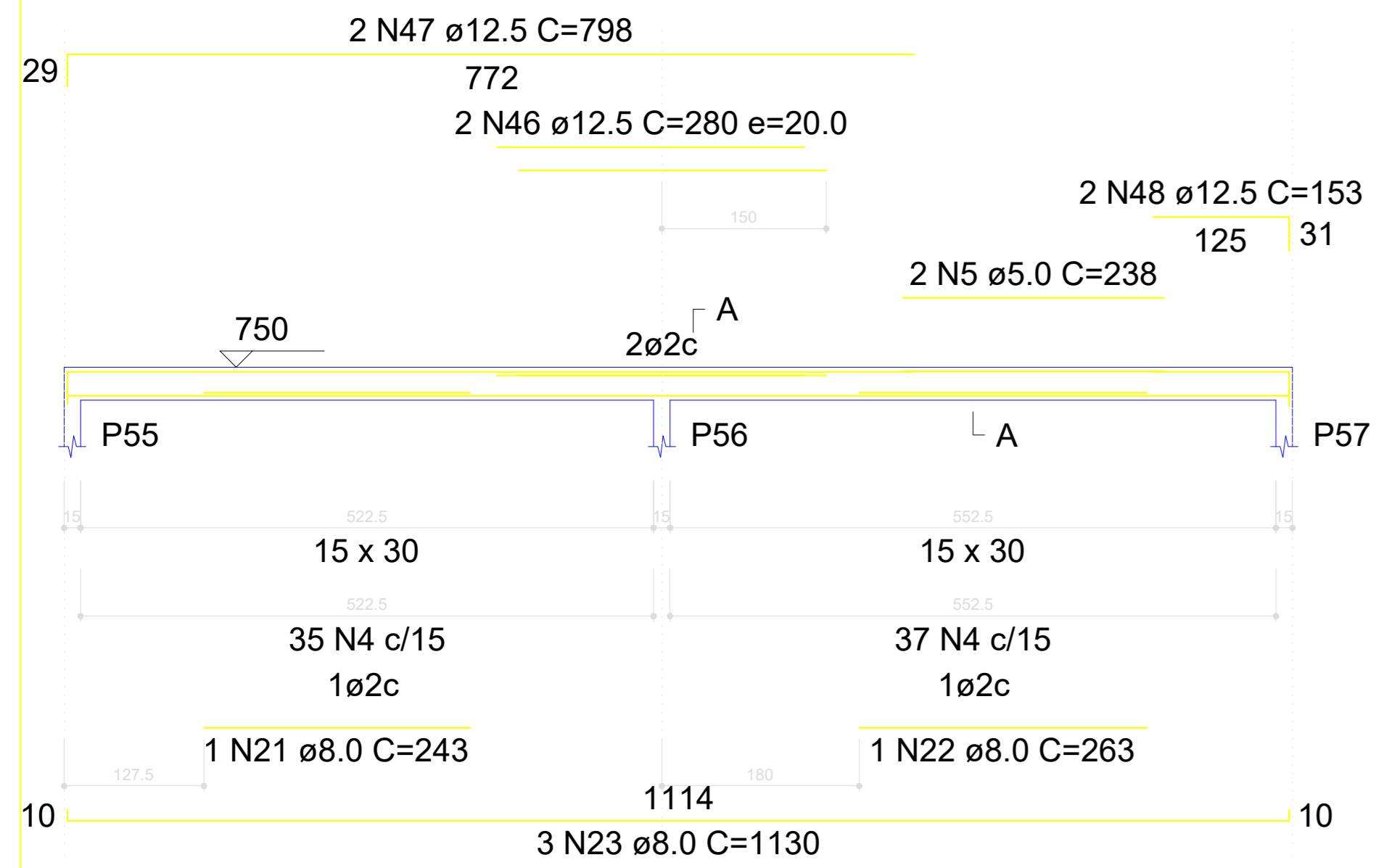
### V29

ESC 1:50



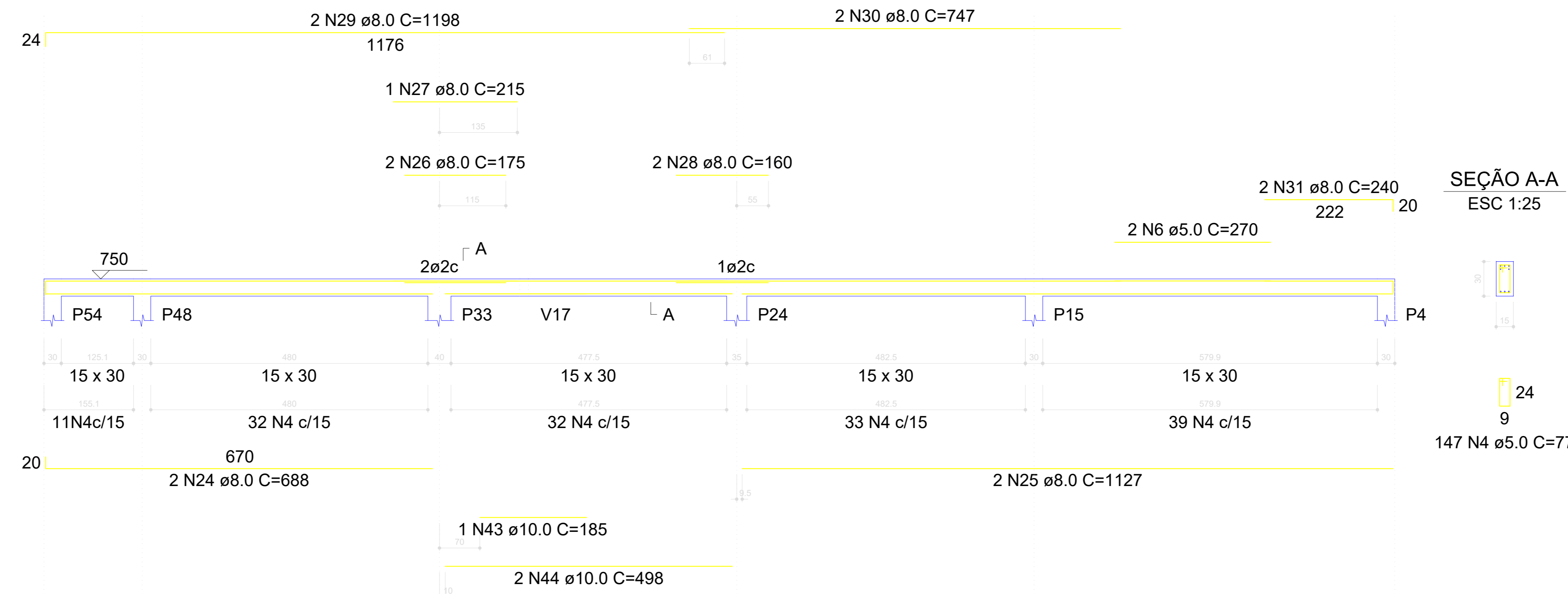
### V30

ESC 1:50



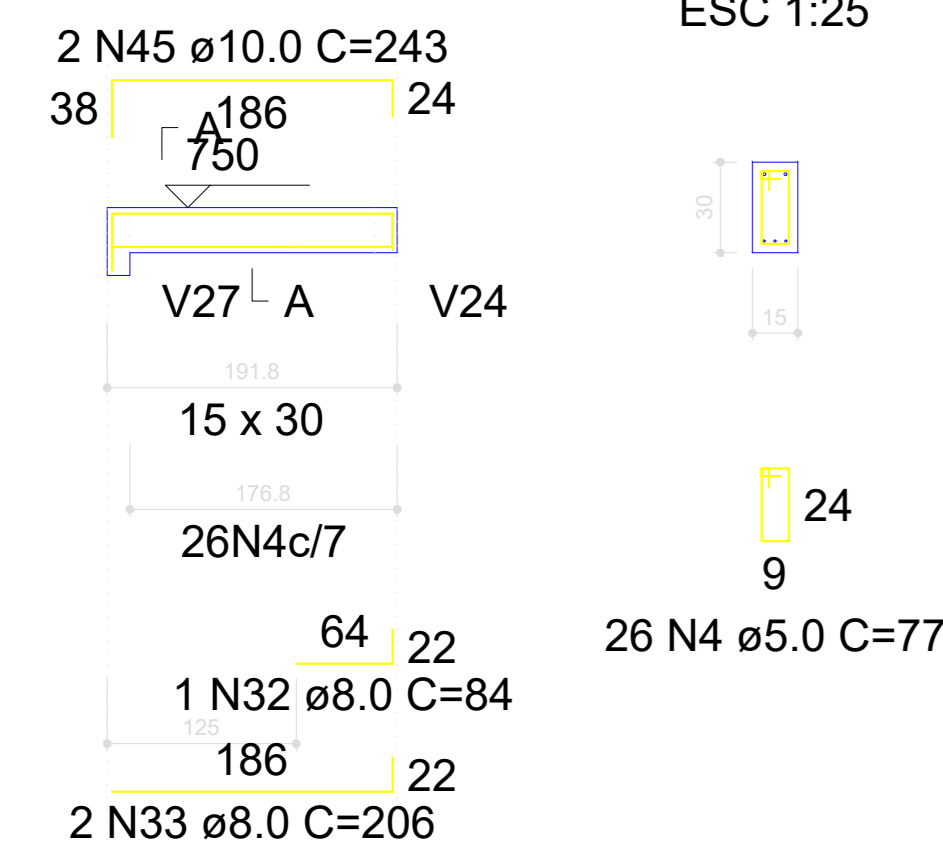
### V31

ESC 1:50



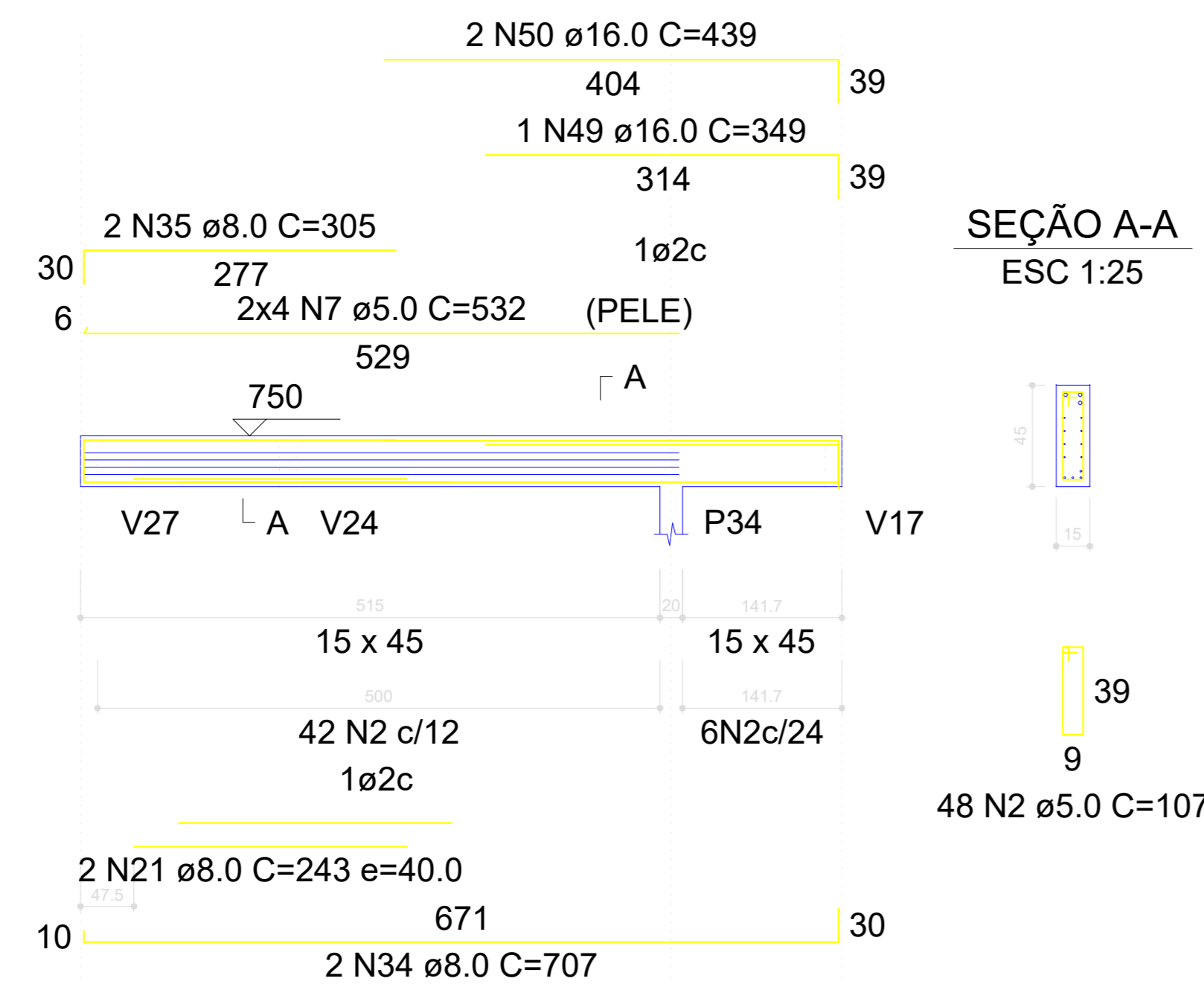
### V32

ESC 1:50



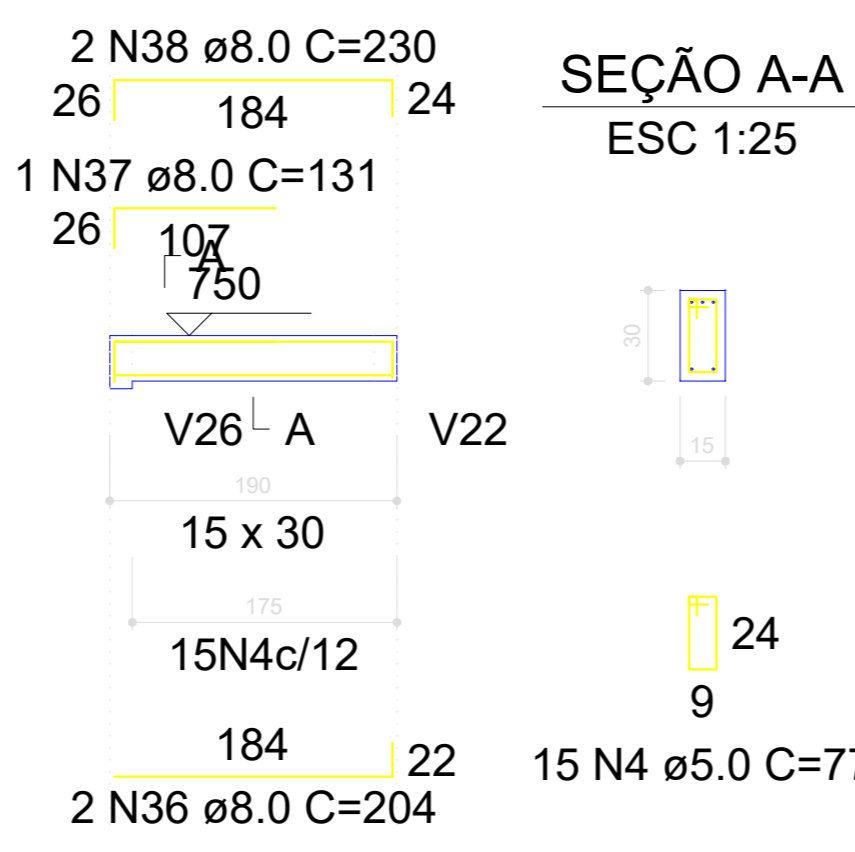
### V33

ESC 1:50



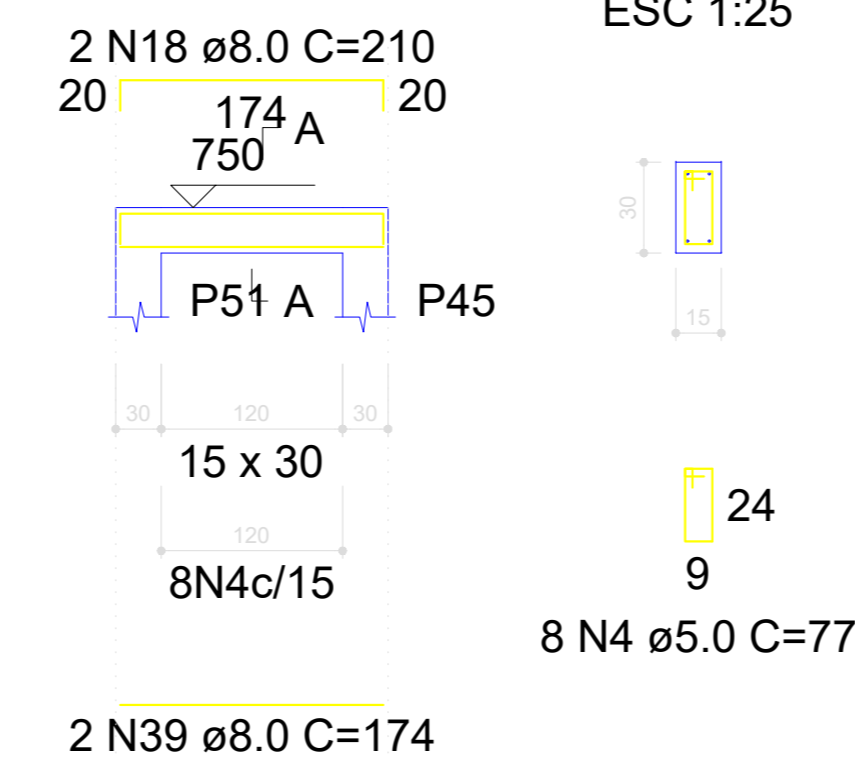
### V35

ESC 1:50



### V36

ESC 1:50



#### RELAÇÃO DO AÇO

AÇO	N	DIAM (mm)	QUANT	C.UNIT (cm)	C.TOTAL (cm)
CA60	1	5.0	65	87	5655
	2	5.0	110	107	11770
	3	5.0	8	732	5856
	4	5.0	296	77	22792
	5	5.0	2	238	476
	6	5.0	2	270	540
	7	5.0	8	532	4256
CA50	8	6.3	2	76	152
	9	8.0	1	132	132
	10	8.0	1	248	248
	11	8.0	2	655	1310
	12	8.0	1	180	180
	13	8.0	1	208	208
	14	8.0	2	740	1480
	15	8.0	1	463	463
	16	8.0	2	773	1546
	17	8.0	2	190	380
	18	8.0	4	210	840
	19	8.0	2	284	568
	20	8.0	2	320	640
	21	8.0	3	243	729
	22	8.0	1	263	263
	23	8.0	3	1130	3390
	24	8.0	2	688	1376
	25	8.0	2	1127	2254
	26	8.0	2	175	350
	27	8.0	1	215	215
	28	8.0	2	160	320
	29	8.0	2	1198	2396
	30	8.0	2	747	1494
	31	8.0	2	240	480
	32	8.0	1	84	84
	33	8.0	2	206	412
	34	8.0	2	707	1414
	35	8.0	2	305	610
	36	8.0	2	204	408
	37	8.0	1	131	131
	38	8.0	2	230	460
	39	8.0	2	174	348
	40	10.0	1	195	195
	41	10.0	1	346	346
	42	10.0	2	682	1364
	43	10.0	1	185	185
	44	10.0	2	498	996
	45	10.0	2	243	486
	46	12.5	2	280	560
	47	12.5	2	798	1596
	48	12.5	2	153	306
	49	16.0	1	349	349
	50	16.0	2	439	878

#### RESUMO DO AÇO

AÇO	DIAM (mm)	C.TOTAL (m)	PESO + 10% (kg)
CA50	6.3	1.5	0.4
	8.0	251.3	109.1
	10.0	35.7	24.2
	12.5	24.6	26.1
	16.0	12.3	21.3
CA60	5.0	513.5	87.1
PESO TOTAL (kg)			
CA50		181.1	
CA60		87.1	

Volume de concreto (C-25) = 3.31 m³  
Área de forma = 53.94 m²

PROJETO: **ESCOLA EDEVAL SUZART COUTINHO**

TÍTULO: **PROJETO ESTRUTURAL**

ENDEREÇO: **ZONA URBANA** OBJETO: **VIGAS**

MUNICÍPIO: **IBIRAPITANGA - BA**

RESPONSÁVEL TÉCNICO: **ADEBALDO RODRIGUES DOS SANTOS** ART: **18429/D** PRANCHIA: **EST17**

ARQUIVO: **ESC. INDICADA** DATA: **JULHO/2022**