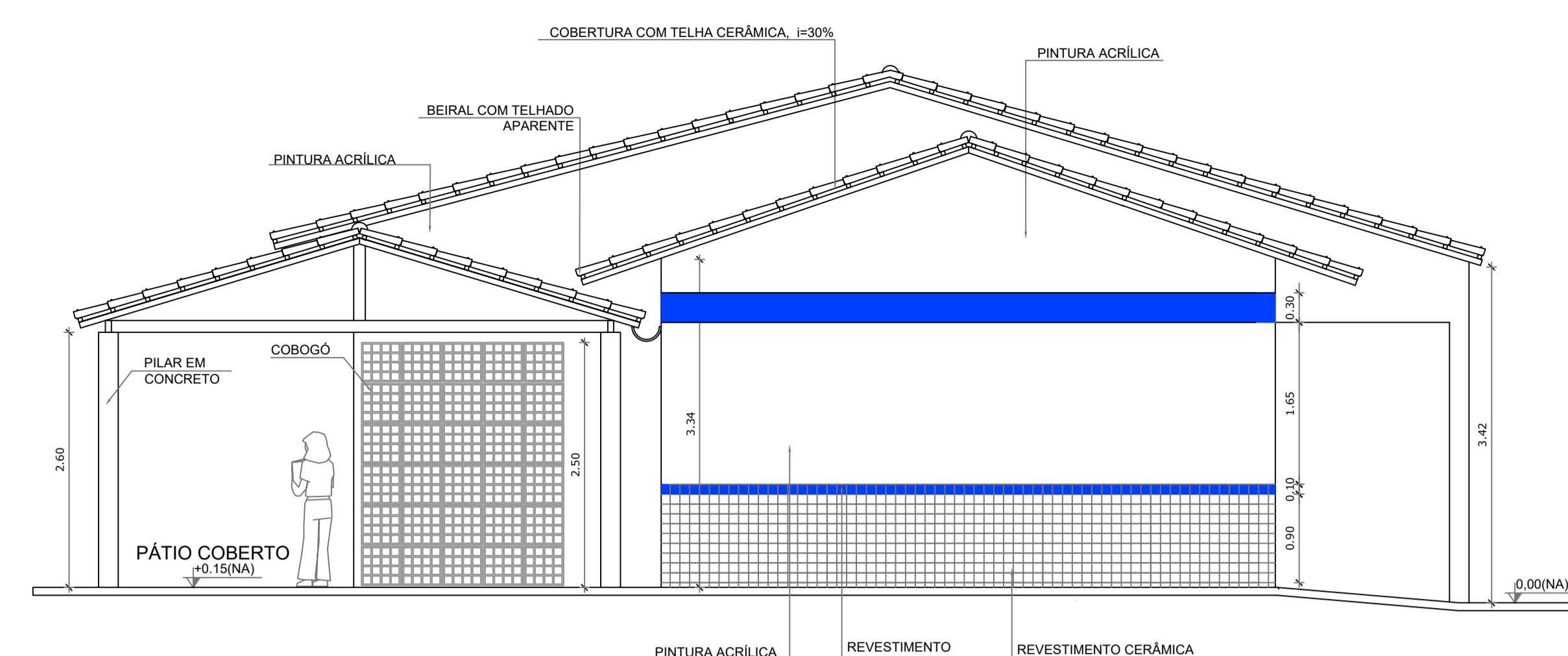
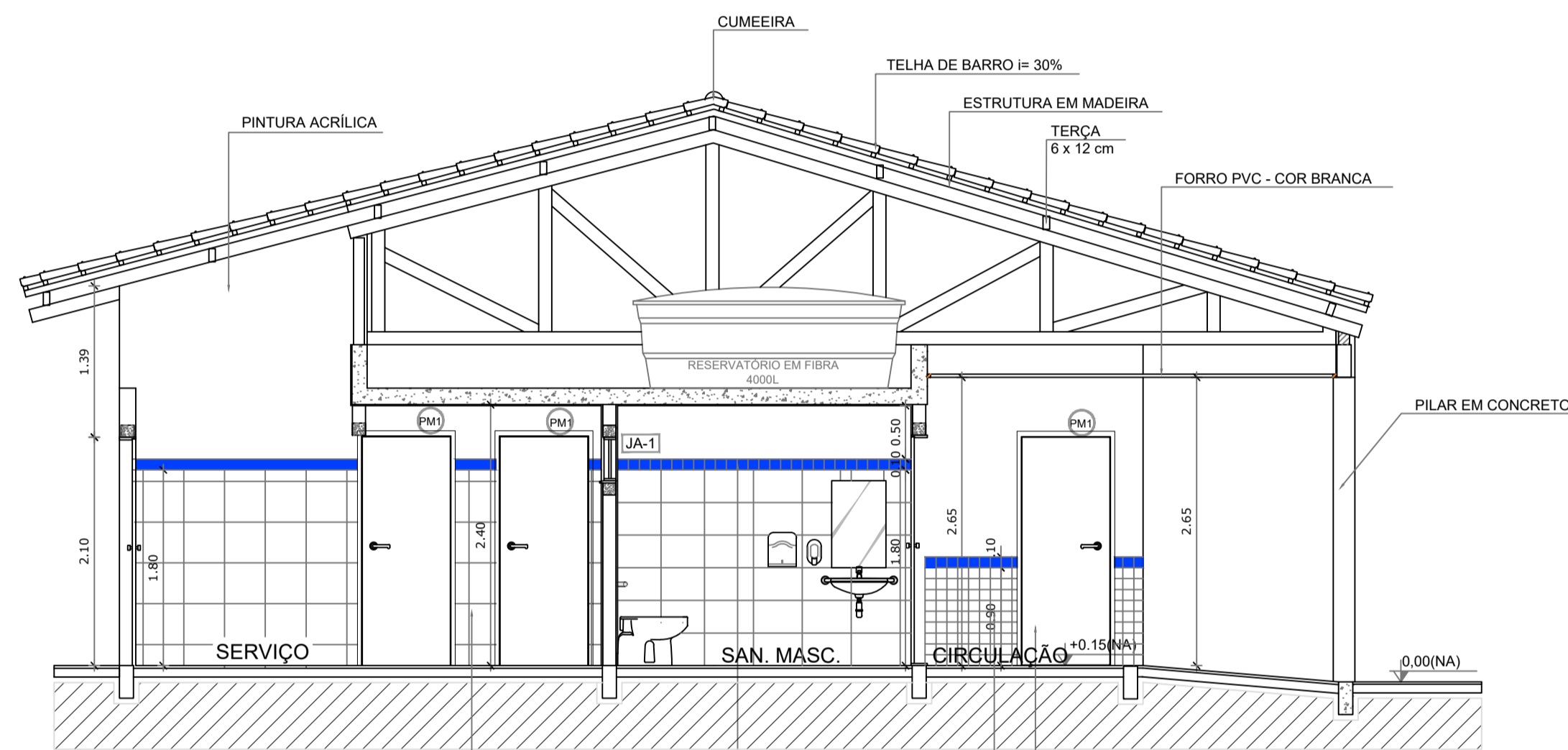


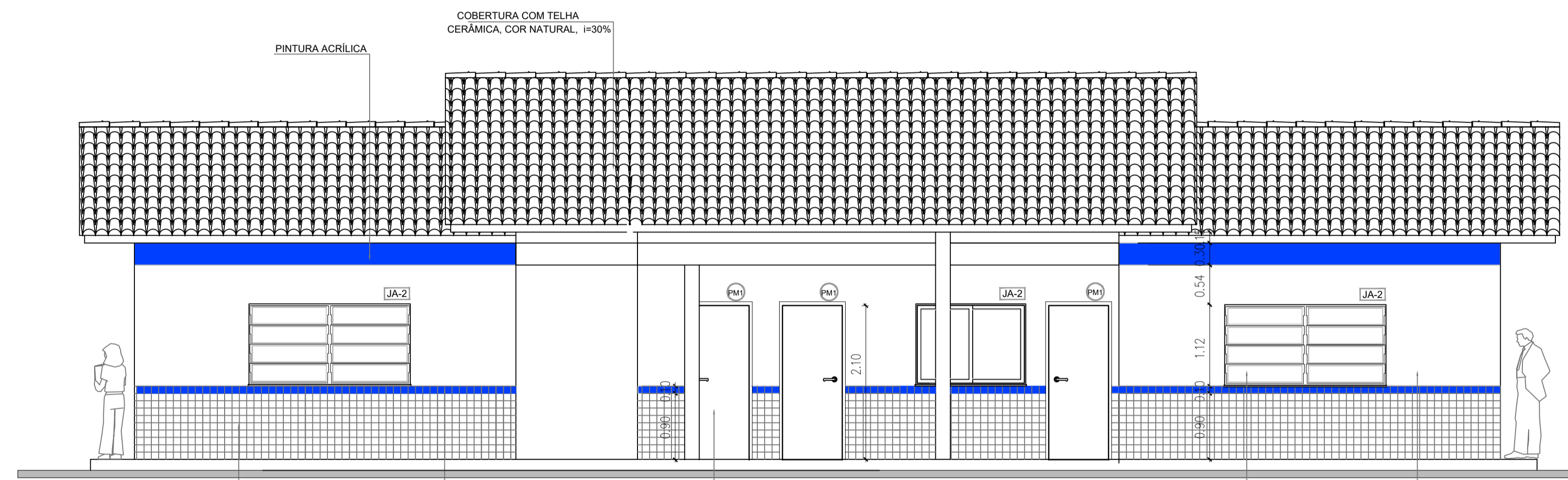
CORTE AA
ESC. 1/50



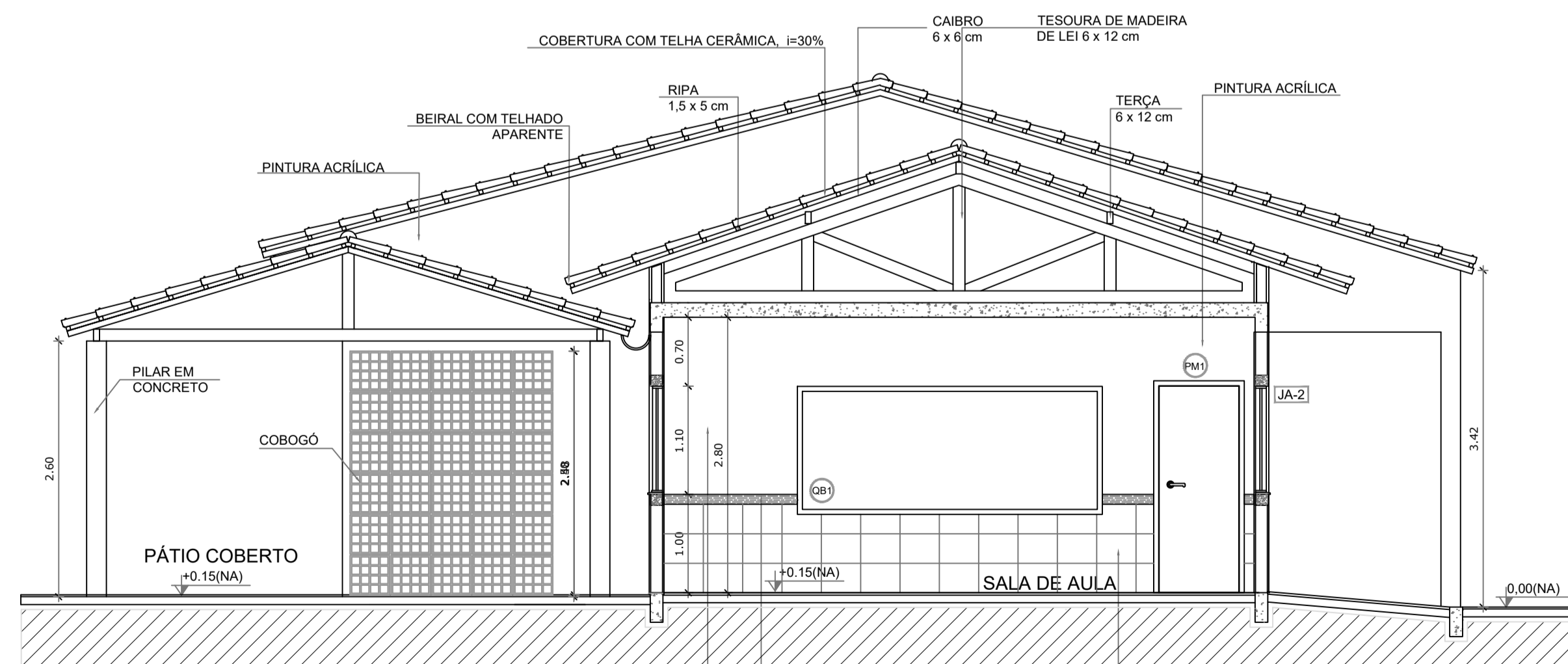
FACHADA LATERAL
ESC. 1/50



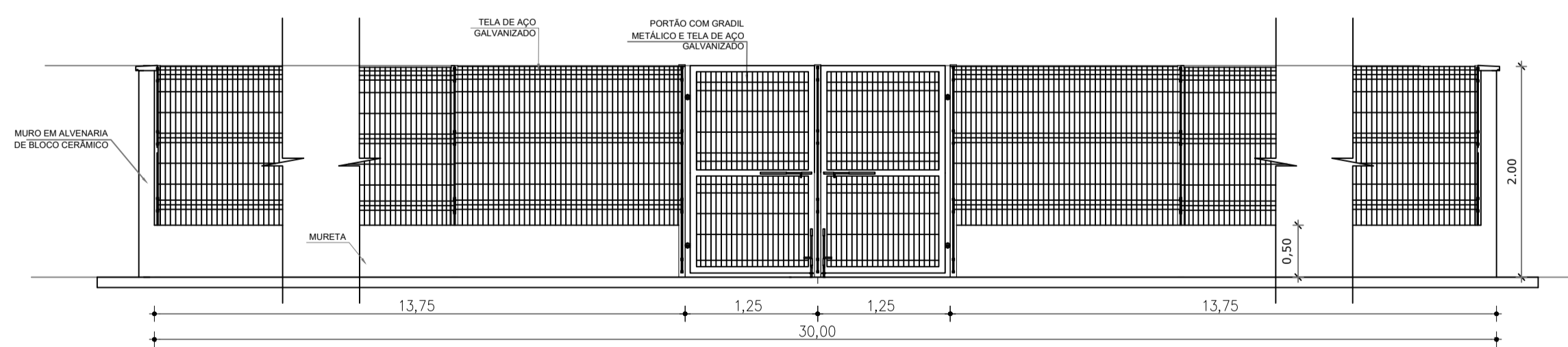
CORTE BB
ESC. 1/50



FACHADA FRONTAL
ESC. 1/50



CORTE CC
ESC. 1/50



VISTA FRONTAL - GRADIL
ESC. 1/50

PREFEITURA MUNICIPAL DE IBIRAPITANGA

PROJETO: ESCOLA 2 SALAS

LOCAL: MASCOTE - BA	OBJETO: CORTES E FACHADAS
ENDEREÇO: REGIÃO DO QUARESMA	
RESPONSÁVEL TÉCNICO: ADEBALDO RODRIGUES DOS SANTOS ENG. CIVIL CREA: 18459/D	OBSERVAÇÕES:
ÁREA:	FRANCA: ARQ3
ESCALA: 1/50	DATA: Outubro/2022