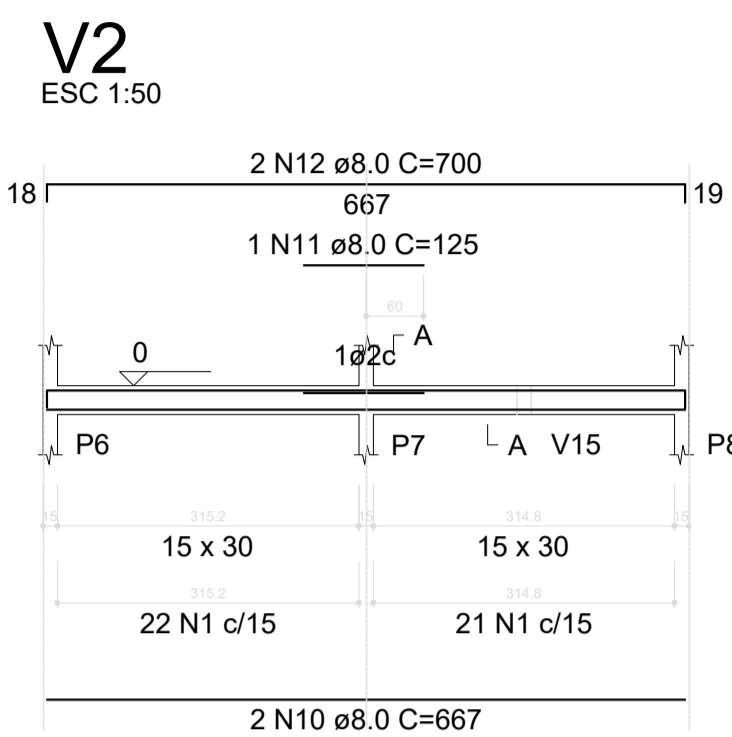
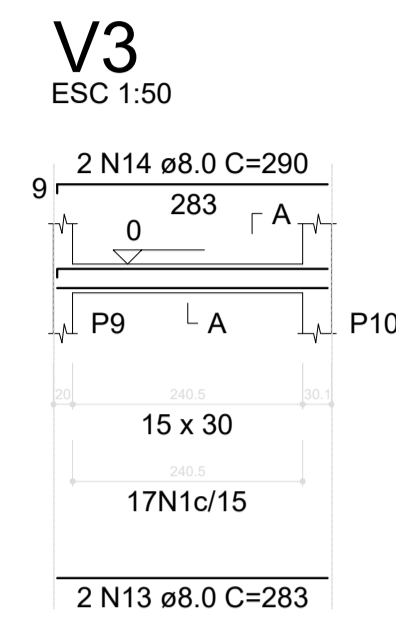


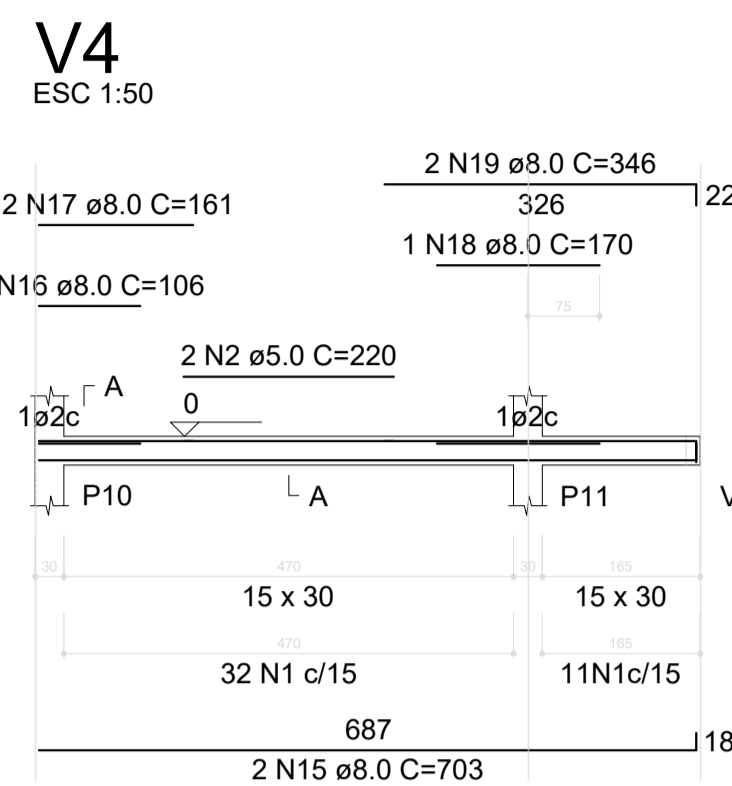
SEÇÃO A-A
ESC 1:25



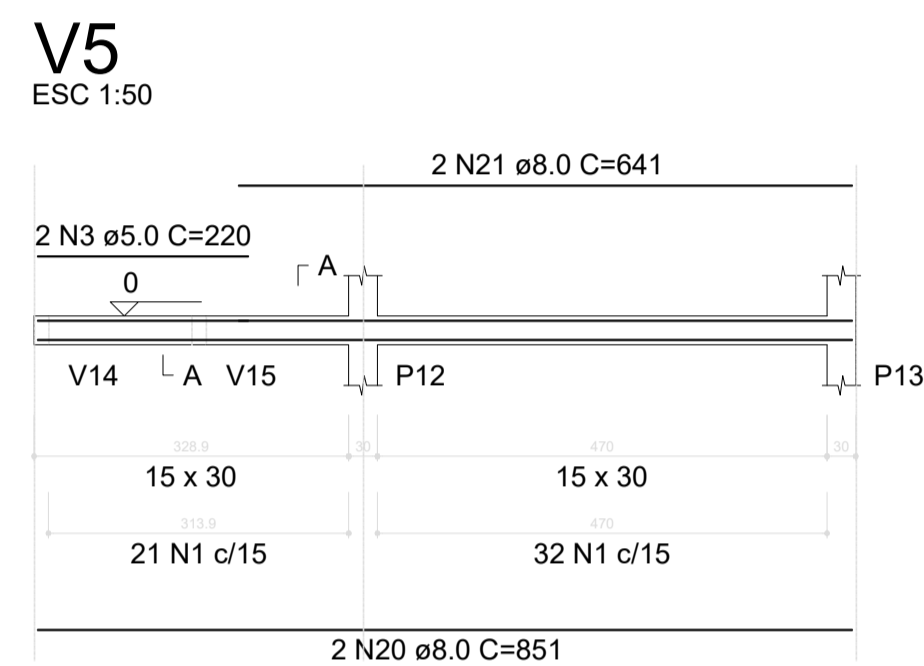
SEÇÃO A-A
ESC 1:25



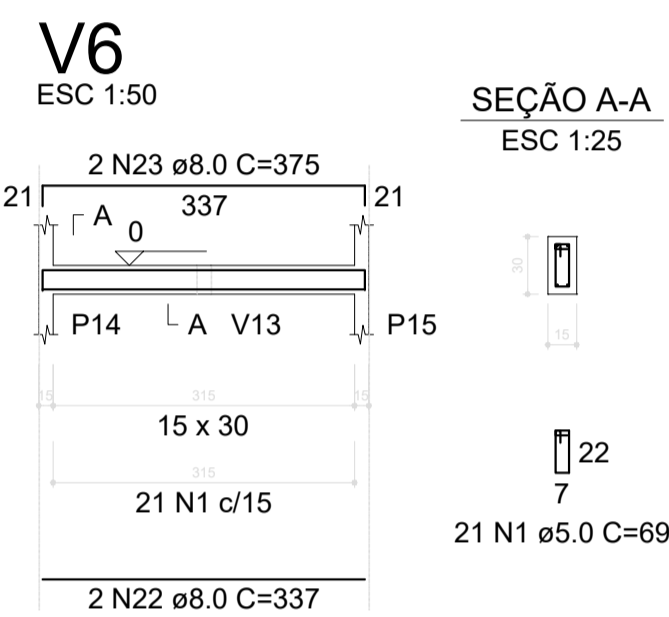
SEÇÃO A-A
ESC 1:25



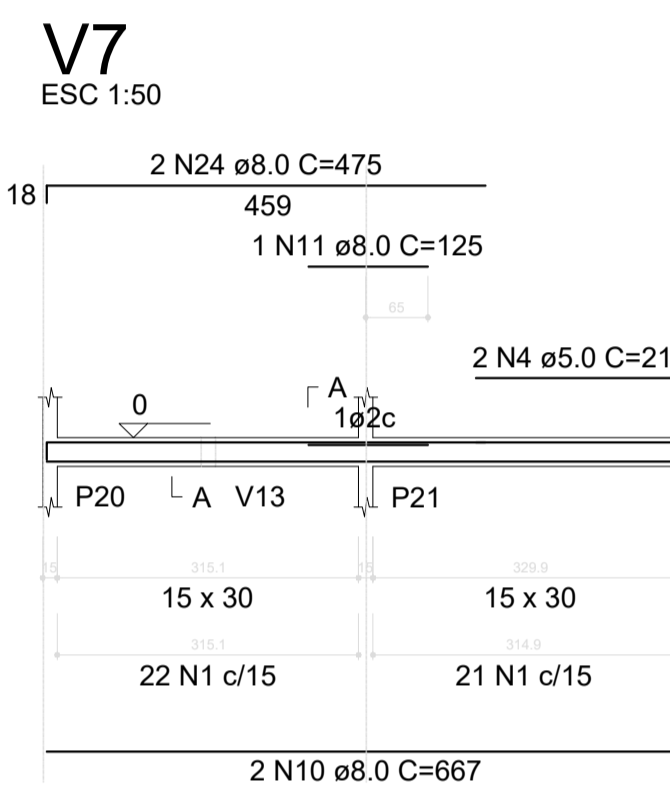
SEÇÃO A-A
ESC 1:25



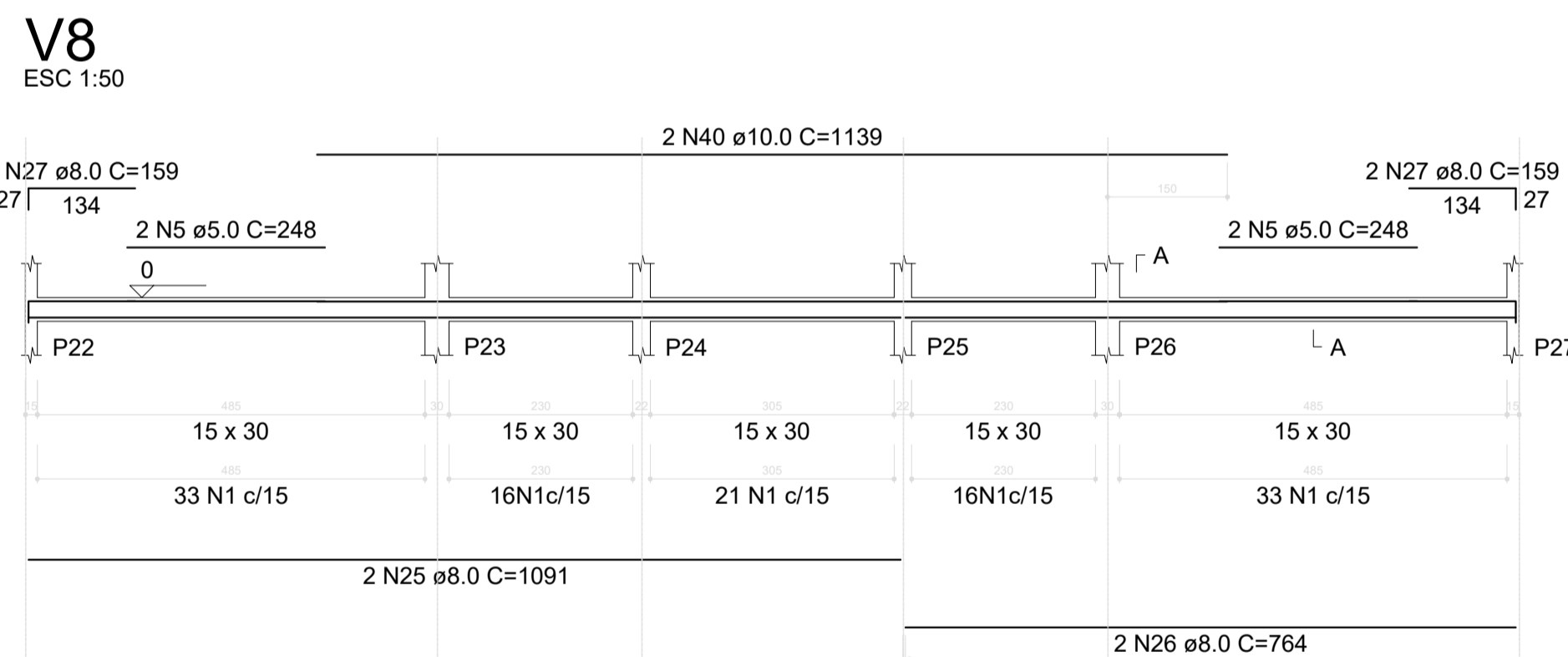
SEÇÃO A-A
ESC 1:25



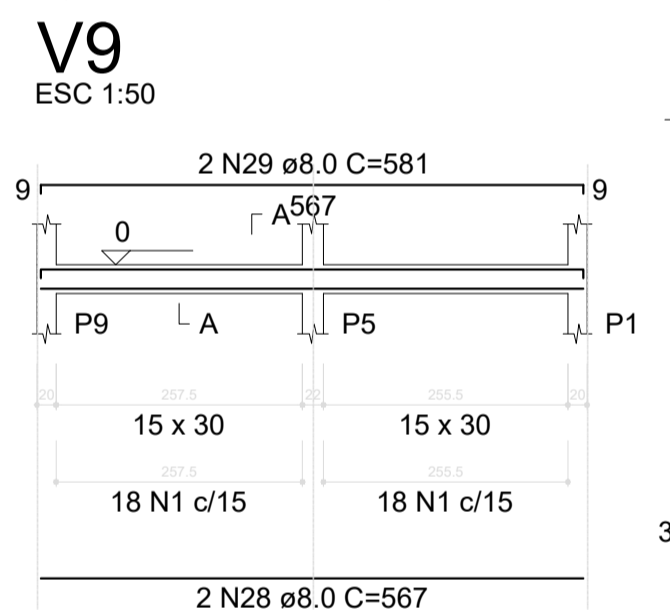
SEÇÃO A-A
ESC 1:25



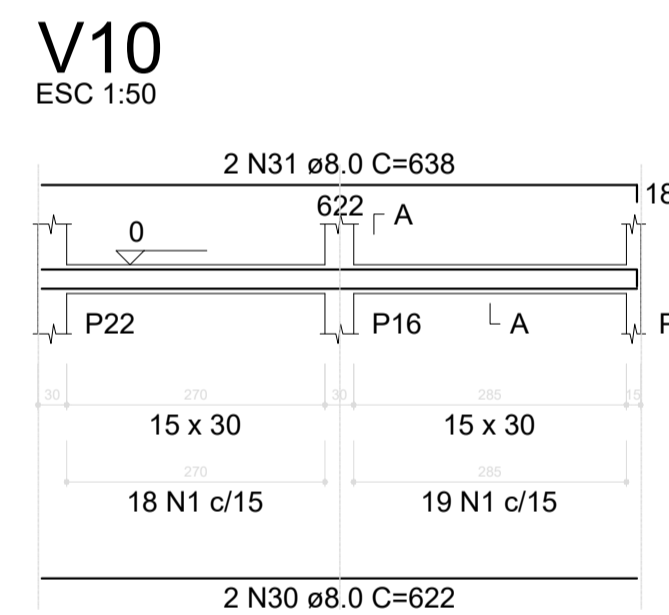
SEÇÃO A-A
ESC 1:25



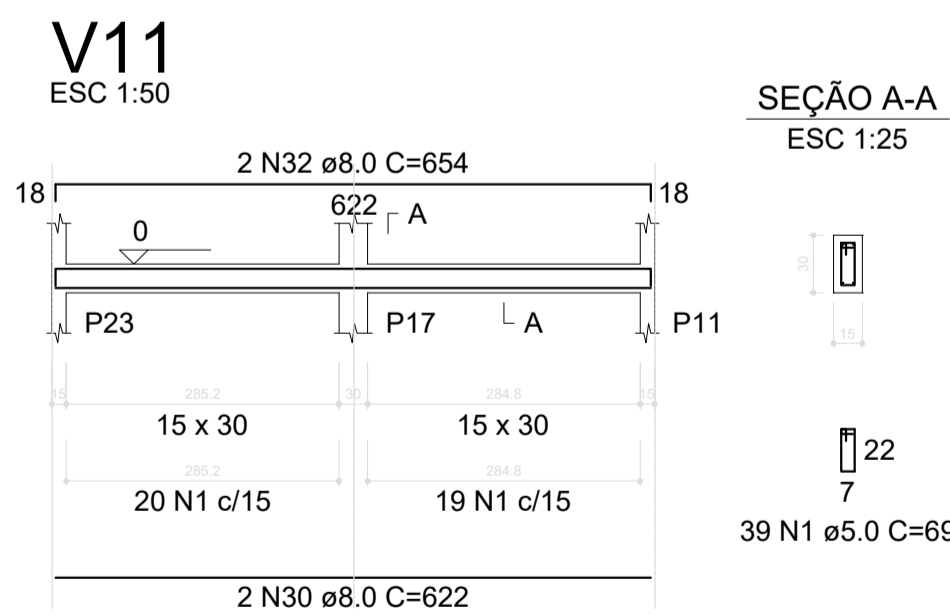
SEÇÃO A-A
ESC 1:25



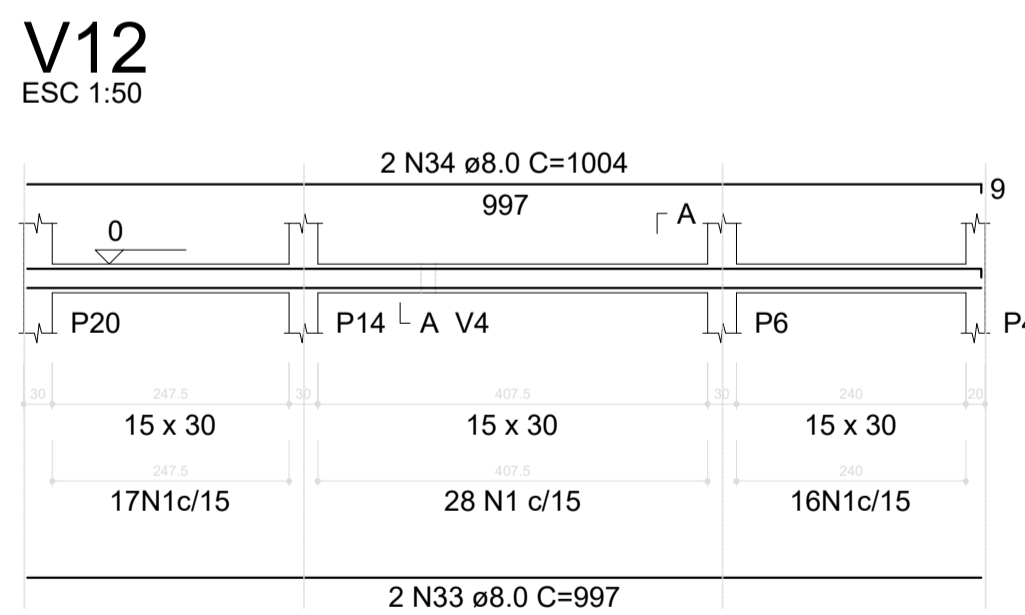
SEÇÃO A-A
ESC 1:25



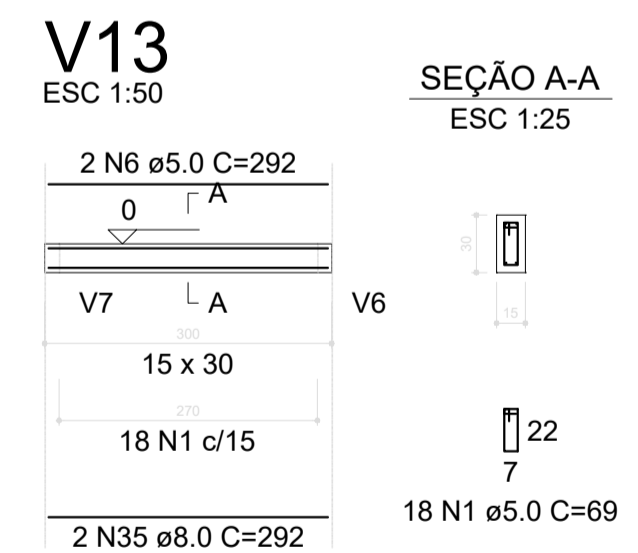
SEÇÃO A-A
ESC 1:25



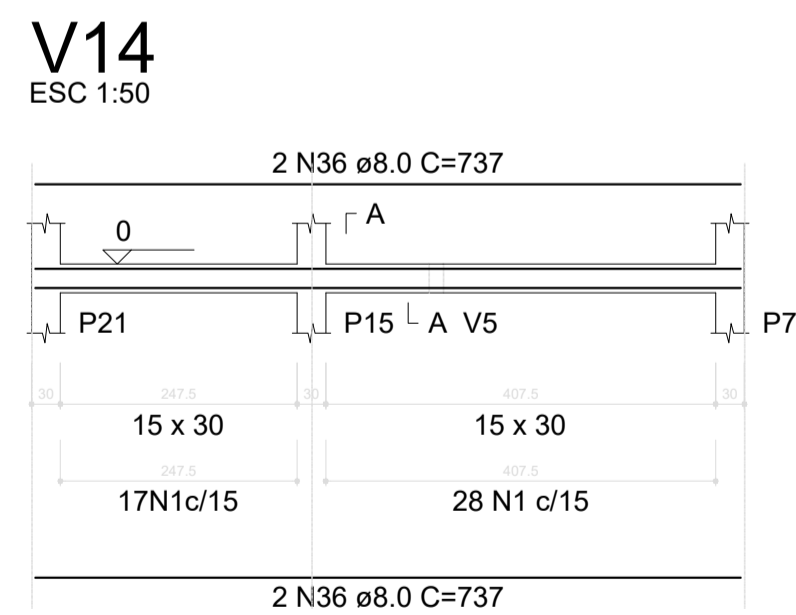
SEÇÃO A-A
ESC 1:25



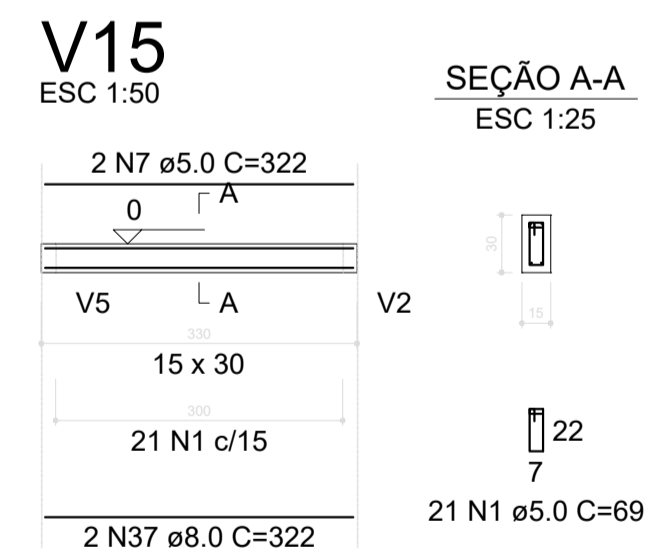
SEÇÃO A-A
ESC 1:25



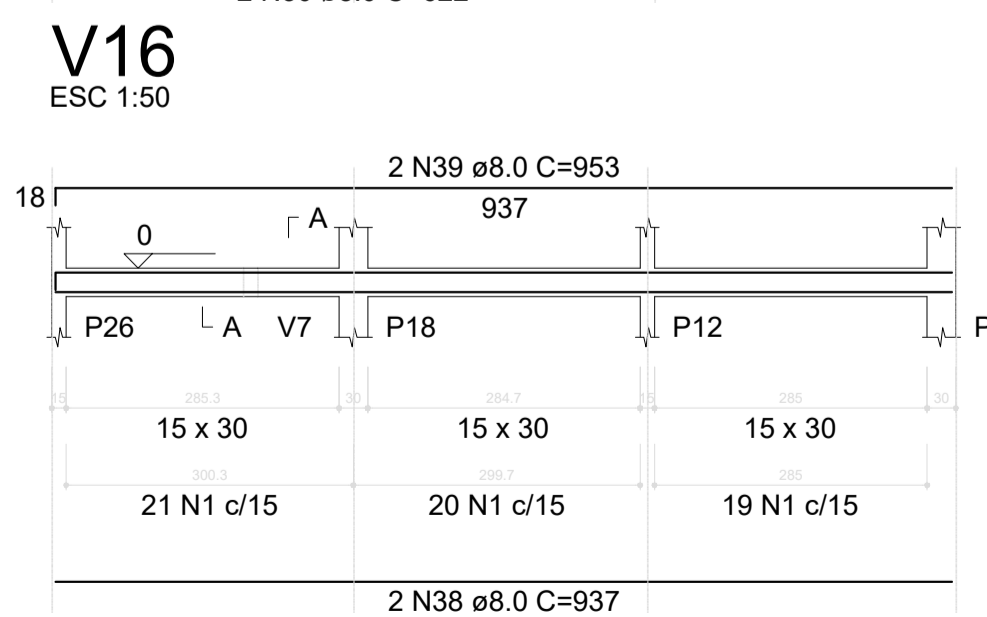
SEÇÃO A-A
ESC 1:25



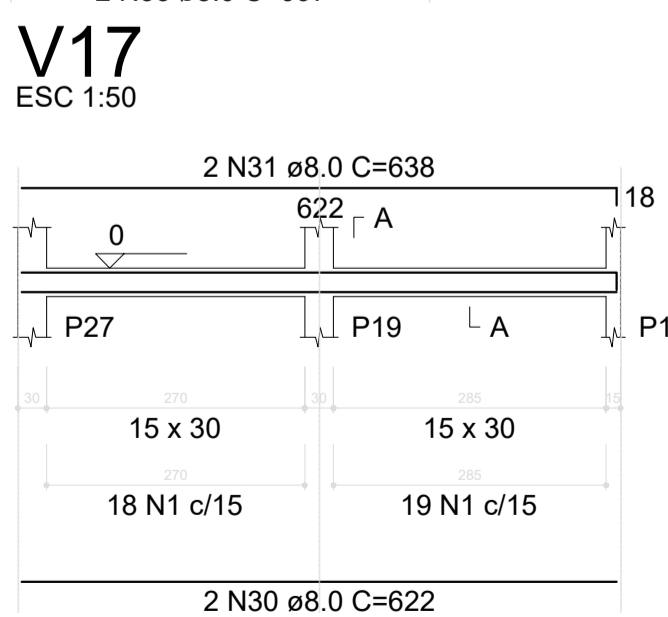
SEÇÃO A-A
ESC 1:25



SEÇÃO A-A
ESC 1:25



SEÇÃO A-A
ESC 1:25



SEÇÃO A-A
ESC 1:25

RELAÇÃO DO AÇO

V1	V2	V3
V4	V5	V6
V7	V8	V9
V10	V11	V12
V13	V14	V15
V16	V17	

AÇO	N	DIAM (mm)	QUANT	C.UNIT (cm)	C.TOTAL (cm)
CA60	1	5.0	753	69	51957
	2	5.0	2	220	440
	3	5.0	2	220	440
	4	5.0	2	218	436
	5	5.0	4	248	992
	6	5.0	2	292	584
	7	5.0	2	322	644
CA50	8	8.0	2	947	1894
	9	8.0	2	961	1922
	10	8.0	4	667	2668
	11	8.0	2	125	250
	12	8.0	2	700	1400
	13	8.0	2	283	566
	14	8.0	2	290	580
	15	8.0	2	703	1406
	16	8.0	1	106	106
	17	8.0	2	161	322
	18	8.0	1	170	170
	19	8.0	2	346	692
	20	8.0	2	851	1702
	21	8.0	2	641	1282
	22	8.0	2	337	674
	23	8.0	2	375	750
	24	8.0	2	475	950
	25	8.0	2	1091	2182
	26	8.0	2	764	1528
	27	8.0	4	159	636
	28	8.0	2	567	1134
	29	8.0	2	581	1162
	30	8.0	6	622	3732
	31	8.0	4	638	2552
	32	8.0	2	654	1308
	33	8.0	2	997	1994
	34	8.0	2	1004	2008
	35	8.0	2	292	584
	36	8.0	4	737	2948
	37	8.0	2	322	644
	38	8.0	2	937	1874
	39	8.0	2	953	1906
	40	10.0	2	1139	2278

RESUMO DO AÇO

AÇO	DIAM (mm)	C.TOTAL (m)	PESO + 10% (kg)
CA50	8.0	435.3	188.9
CA60	10.0	22.8	15.4
CA60	5.0	554.9	94.1
PESO TOTAL (kg)			
CA50	204.4		
CA60	94.1		

Volume de concreto (C-30) = 5.47 m³
Área de forma = 91.15 m²

PREFEITURA MUNICIPAL DE IBIRAPITANGA

PROJETO: ESTRUTURAL - ESCOLA 2 SALAS

LOCAL: MASCOTE - BA	OBJETO: VIGAS BALDRAMES
ENDEREÇO: REGIÃO DO QUARESMA	
RESPONSÁVEL TÉCNICO: ADEBALDO RODRIGUES DOS SANTOS ENG. CIVIL CREA: 18459/D	OBSERVAÇÕES:
ÁREA:	PRANCHA: EST5
ESCALA: 1/50	DATA: novembro/2022