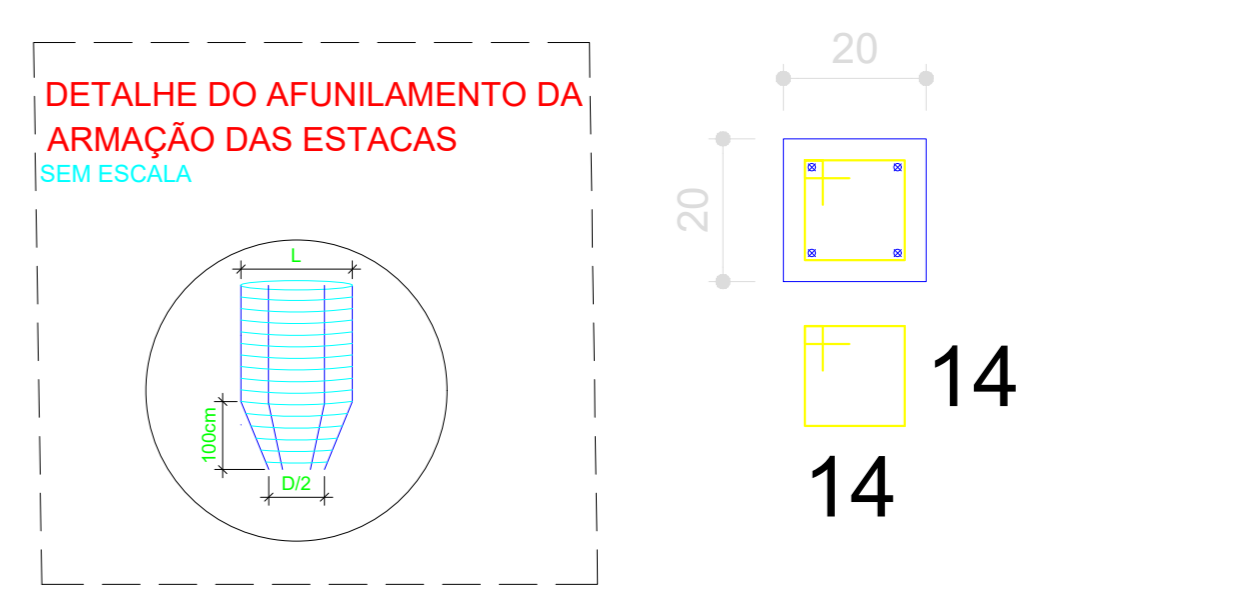
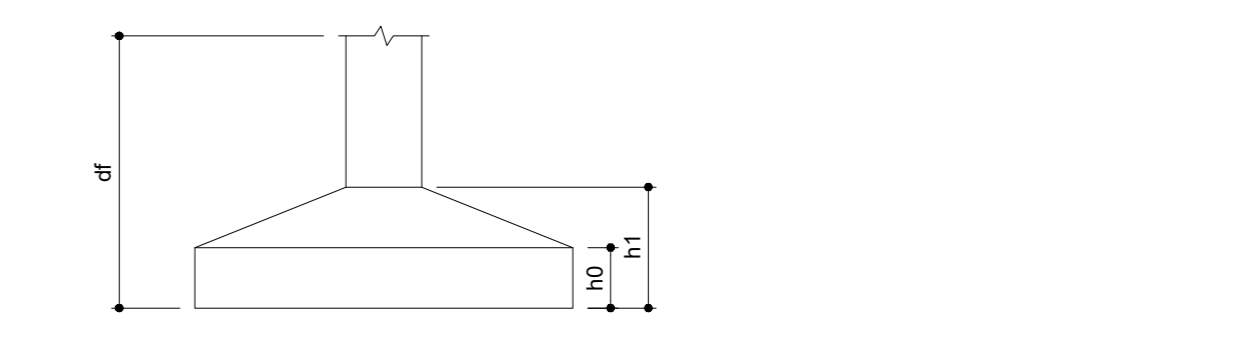
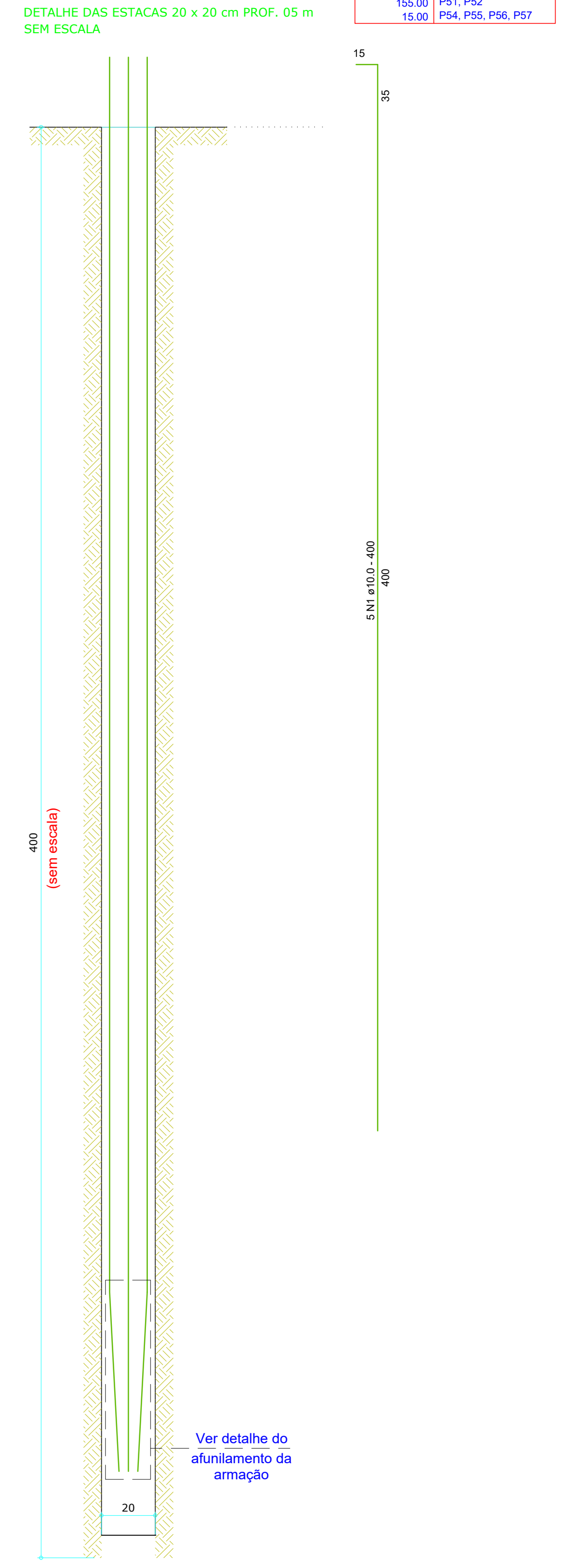


Nome	Seção	Pilar		Carga Máx. (kN)	Carga Min. (kN)	Fundação				
		X (cm)	Y (cm)			Lado B (cm)	Lado H (cm)	N1 (cm)	N2 (cm)	df (cm)
P1	15x30	-1112.50	2475.00	5.0	3.9	60	75	25	25	150
P2	15x30	-597.50	2475.00	5.4	4.3	60	75	25	25	150
P3	15x30	-2737.50	2475.00	5.8	2.3	60	75	25	25	150
P4	15x30	-2737.50	2325.00	5.1	3.7	60	75	25	25	150
P5	20x30	-2334.47	2325.00	7.0	5.3	60	75	25	25	150
P6	15x30	-2016.42	2325.00	5.1	3.4	60	75	25	25	150
P7	15x30	-1861.36	2325.00	5.9	4.0	60	75	25	25	150
P8	15x30	-597.50	2325.00	11.1	8.9	60	80	25	25	150
P9	20x30	-5.00	2324.37	6.5	4.4	60	75	25	25	150
P10	20x30	-1455.76	2144.69	6.4	4.7	60	75	25	25	150
P11	15x30	-1112.50	2092.42	7.2	5.3	70	80	25	25	150
P12	15x30	-1112.50	1849.37	4.4	3.2	60	75	25	25	150
P13	15x30	-597.50	1849.37	8.2	6.3	70	80	25	25	150
P14	15x30	-1861.36	1849.37	5.5	3.7	60	75	25	25	150
P15	15x30	-2737.50	1715.11	8.6	6.8	60	80	25	25	150
P16	20x35	-2375.00	1717.81	15.8	10.9	95	100	25	25	150
P17	15x30	-2017.50	1715.11	13.7	9.9	60	100	25	25	150
P18	15x30	-362.09	1676.87	6.5	4.9	60	75	25	25	150
P19	15x30	-7.50	1676.87	6.2	4.1	60	75	25	25	150
P20	20x30	-1795.00	1676.87	10.6	8.3	60	75	25	25	150
P21	20x35	-1115.00	1625.11	7.5	5.3	65	75	25	25	150
P22	15x30	-362.09	1595.93	10.0	7.2	60	80	25	25	150
P23	15x30	-7.50	1595.93	9.8	6.9	60	80	25	25	150
P24	20x35	-2735.00	1500.11	11.1	7.8	80	95	25	25	150
P25	20x35	-2375.00	1500.11	17.8	12.3	100	115	25	25	150
P26	15x30	-2017.50	1500.11	13.9	9.7	60	75	25	25	150
P27	15x30	-1861.36	1500.11	6.4	4.9	60	75	25	25	150
P28	25x40	-1237.50	1232.81	2.4	1.9	0	0	0	0	0
P29	15x30	-1815.00	870.00	4.5	3.1	60	75	25	25	150
P30	20x35	-1390.00	897.50	3.0	0.3	0	0	0	0	0
P31	15x30	-362.09	895.50	8.4	6.0	70	80	25	25	150
P32	15x30	-7.50	895.50	8.3	4.2	60	75	25	25	150
P33	15x40	-2732.50	685.11	12.5	8.8	85	100	25	25	150
P34	25x40	-2375.00	680.11	24.3	17.0	0	0	0	0	0
P35	15x30	-2017.50	685.11	16.7	11.6	100	115	25	25	150
P36	15x30	-1795.00	722.50	9.7	6.7	80	95	25	25	150
P37	15x30	-1861.36	722.50	6.8	2.8	60	75	25	25	150
P38	15x30	-1112.50	712.50	10.1	7.6	80	95	25	25	150
P39	15x30	-575.00	715.00	11.5	8.4	80	95	25	25	150
P40	15x35	-7.50	712.50	6.3	4.2	60	75	25	25	150
P41	15x30	-1576.00	452.50	3.7	2.6	60	75	25	25	150
P42	15x40	-1112.50	365.00	16.0	11.2	60	75	25	25	150
P43	15x30	-575.00	365.00	22.2	15.9	110	125	15	15	30
P44	15x35	-7.50	365.00	11.1	8.0	80	95	25	25	150
P45	15x30	-1795.00	300.00	9.0	4.5	70	85	25	25	150
P46	15x30	-1817.50	300.00	4.8	1.8	60	75	25	25	150
P47	15x30	-1387.50	315.00	6.8	3.4	60	75	25	25	150
P48	15x30	-2732.50	170.11	6.0	4.1	70	85	25	25	150
P49	15x30	-2375.00	170.11	10.6	7.8	80	95	25	25	150
P50	20x40	-2017.50	177.81	7.0	4.9	60	75	25	25	150
P51	20x40	-1780.00	155.00	2.7	-0.1	0	0	0	0	0
P52	20x40	-1620.00	155.00	2.9	-0.2	0	0	0	0	0
P53	15x30	-1387.50	177.81	3.8	0.6	60	75	25	25	150
P54	25x30	-2727.50	15.00	2.4	-0.8	0	0	0	0	0
P55	15x30	-1112.50	15.00	7.2	5.0	70	85	25	25	150
P56	15x30	-575.00	15.00	13.1	9.3	85	100	25	25	150
P57	15x30	-7.50	15.00	6.8	4.8	60	75	25	25	150

Coordenadas		Localização no eixo X		Localização no eixo Y	
Coordenadas (cm)	Nome	Coordenadas (cm)	Nome	Coordenadas (cm)	Nome
-2735.00	P24	2475.00	P2	2475.00	P1, P3
-2732.50	P4, P16, P33, P48	2475.00	P1, P3	2475.00	P1, P3
-2727.50	P54	2325.00	P4	2325.00	P4
-2375.00	P16, P25, P34, P49	2325.00	P5	2325.00	P5
-2334.47	P5	2325.00	P6	2325.00	P6
-2016.42	P6	2325.00	P7	2325.00	P7
-1861.36	P7	2325.00	P8	2325.00	P8
-1802.50	P17, P26, P35, P50	2325.00	P9	2325.00	P9
-1692.50	P27	2325.00	P10	2325.00	P10
-1601.36	P9	2325.00	P11	2325.00	P11
-1568.87	P50, P36	2325.00	P12	2325.00	P12
-1455.76	P11	2325.00	P13	2325.00	P13
-1455.76	P11	2325.00	P14	2325.00	P14
-1620.00	P52	2325.00	P15	2325.00	P15
-1617.50	P46	2325.00	P16	2325.00	P16
-1615.00	P59	2325.00	P17	2325.00	P17
-1576.00	P41	2325.00	P18	2325.00	P18
-1445.76	P10	2325.00	P19	2325.00	P19
-1380.00	P30	2325.00	P20	2325.00	P20
-1376.00	P47, P53	2325.00	P21	2325.00	P21
-1252.50	P28	2325.00	P22	2325.00	P22
-1202.81	P25	2325.00	P23	2325.00	P23
-1202.81	P25	2325.00	P24	2325.00	P24
-1125.00	P29	2325.00	P25	2325.00	P25
-1115.00	P21	2325.00	P26	2325.00	P26
-1112.50	P11, P12, P38, P42, P55	2325.00	P27	2325.00	P27
-597.50	P2, P6, P13	2325.00	P28	2325.00	P28
-575.00	P36, P43, P56	2325.00	P29	2325.00	P29
-362.09	P18, P52, P51	2325.00	P30	2325.00	P30
-7.50	P3, P14, P19, P23, P32, P40, P44, P57	2325.00	P31	2325.00	P31
-5.00	P9	2325.00	P32	2325.00	P32
-5.00	P9	2325.00	P33	2325.00	P33
-5.00	P9	2325.00	P34	2325.00	P34
-5.00	P9	2325.00	P35	2325.00	P35
-5.00	P9	2325.00	P36	2325.00	P36
-5.00	P9	2325.00	P37	2325.00	P37
-5.00	P9	2325.00	P38	2325.00	P38
-5.00	P9	2325.00	P39	2325.00	P39
-5.00	P9	2325.00	P40	2325.00	P40
-5.00	P9	2325.00	P41	2325.00	P41
-5.00	P9	2325.00	P42	2325.00	P42
-5.00	P9	2325.00	P43	2325.00	P43
-5.00	P9	2325.00	P44	2325.00	P44
-5.00	P9	2325.00	P45	2325.00	P45
-5.00	P9	2325.00	P46	2325.00	P46
-5.00	P9	2325.00	P47	2325.00	P47
-5.00	P9	2325.00	P48	2325.00	P48
-5.00	P9	2325.00	P49	2325.00	P49
-5.00	P9	2325.00	P50	2325.00	P50
-5.00	P9	2325.00	P51	2325.00	P51
-5.00	P9	2325.00	P52	2325.00	P52
-5.00	P9	2325.00	P53	2325.00	P53
-5.00	P9	2325.00	P54	2325.00	P54
-5.00	P9	2325.00	P55	2325.00	P55
-5.00	P9	2325.00	P56	2325.00	P56
-5.00	P9	2325.00	P57	2325.00	P57



DETALHE BLOCO DE UMA ESTACA



Planta de locação escala 1:50

PROJETO: **ESCOLA EDEVAL SUZART COUTINHO**

TÍTULO: **PROJETO ESTRUTURAL**

ENDEREÇO: **ZONA URBANA** OBJETO: **LOCAÇÃO**

MUNICÍPIO: **IBIRAPITANGA - BA**

RESPONSÁVEL TÉCNICO: **ADEBALDO RODRIGUES DOS SANTOS** ART: PRANCHAS: **EST01**

ARQUIVO: ESC: DATA: INDICADA: JULHO/2022