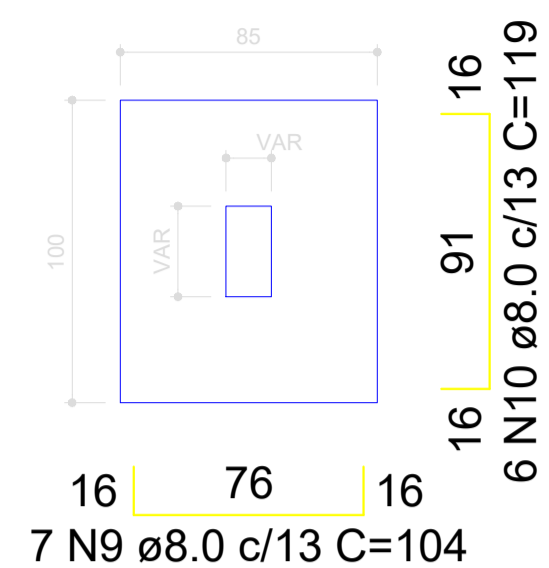


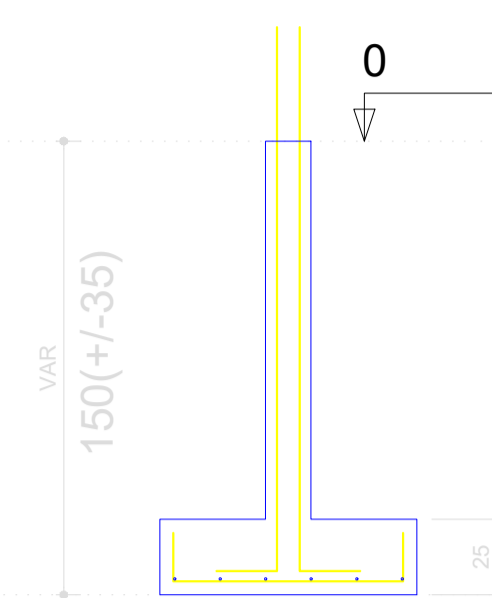
**S33=S56**

PLANTA  
ESC 1:25



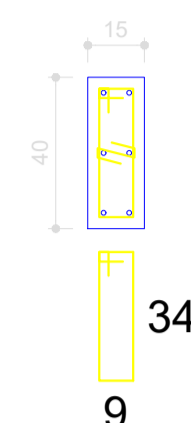
Solo compactado sobre a sapata  
peso específico > 1600.00 kgf/m³

CORTE  
ESC 1:25

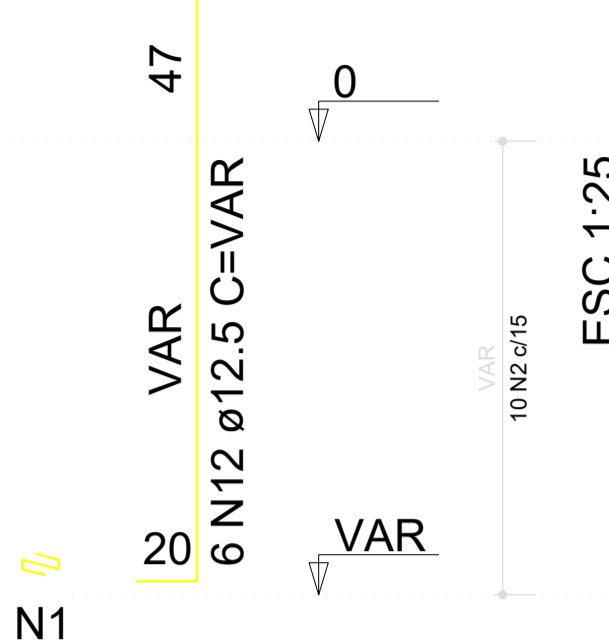


**P33**

FUNDAÇÃO - L1  
ESC 1:20

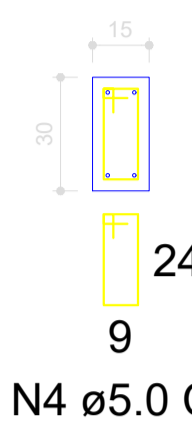


10 N2 ø5.0 C=97  
10 N1 ø5.0 C=24

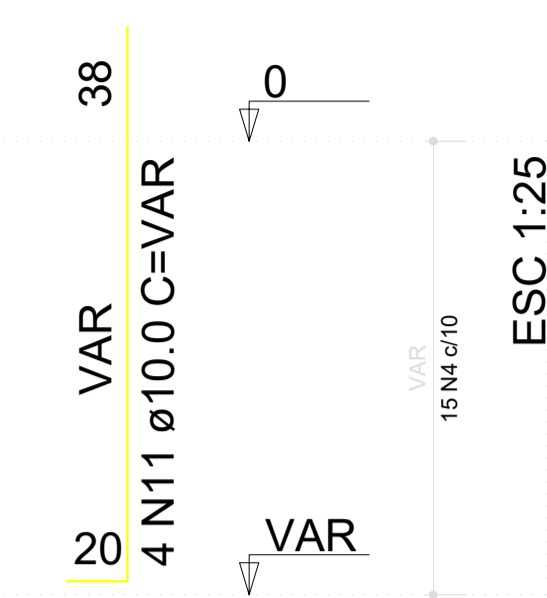


**P56**

FUNDAÇÃO - L1  
ESC 1:20



15 N4 ø5.0 C=77



RELAÇÃO DO AÇO

P33  
P56  
2xS56

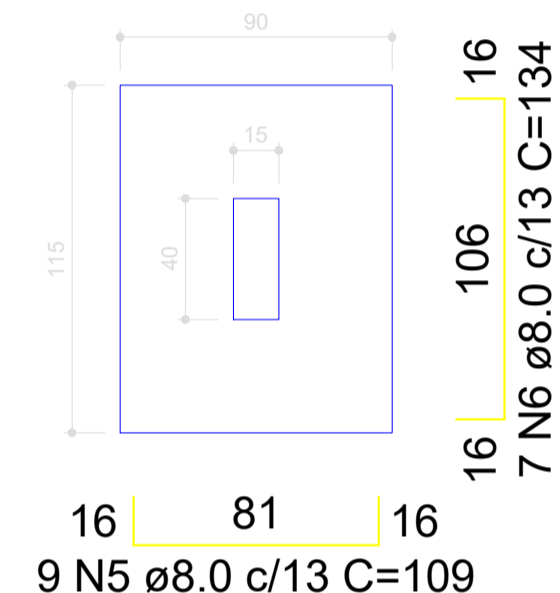
P42  
S42

P43  
S43

AÇO	N	DIAM (mm)	QUANT	C.UNIT (cm)	C.TOTAL (cm)
CA60	1	5.0	10	24	240
	2	5.0	25	97	2425
	3	5.0	30	24	720
	4	5.0	30	77	2310
CA50	5	8.0	9	109	981
	6	8.0	7	134	938
	7	8.0	10	109	1090
	8	8.0	8	124	992
	9	8.0	14	104	1456
	10	8.0	12	119	1428
	11	10.0	16	VAR	VAR
	12	12.5	6	VAR	VAR

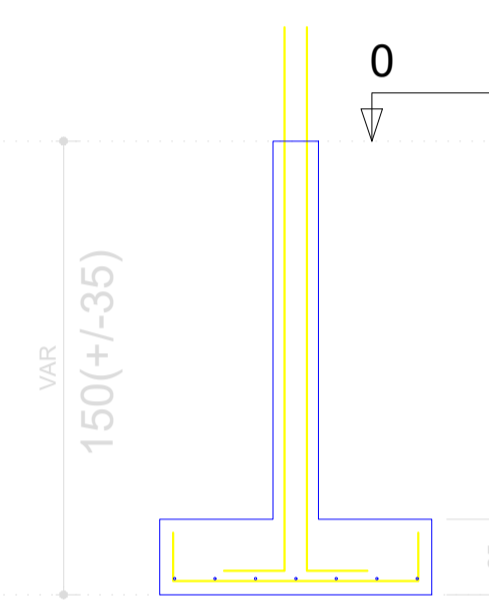
**S42**

PLANTA  
ESC 1:25



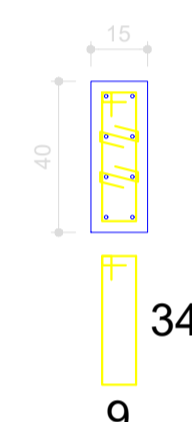
Solo compactado sobre a sapata  
peso específico > 1600.00 kgf/m³

CORTE  
ESC 1:25

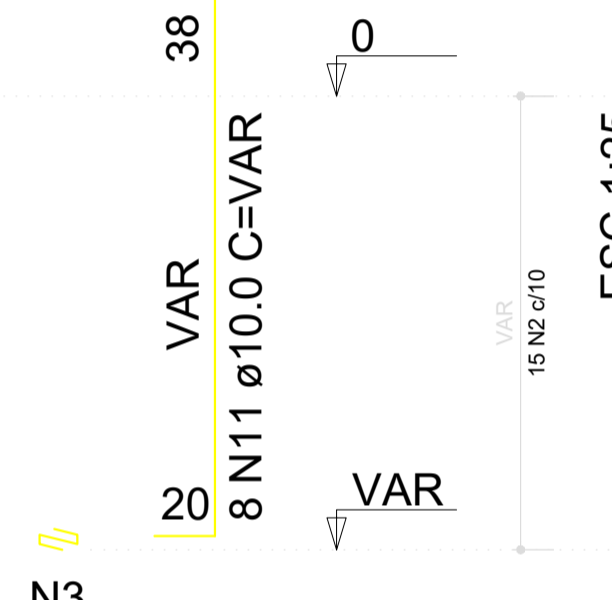


**P42**

FUNDAÇÃO - L1  
ESC 1:20

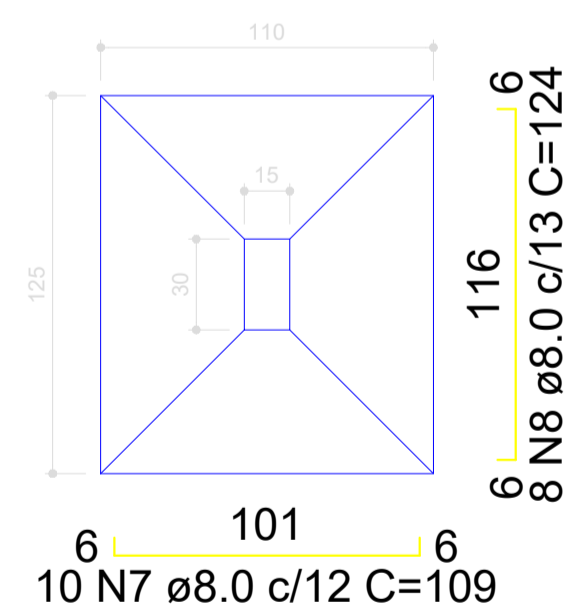


15 N2 ø5.0 C=97  
2x15 N3 ø5.0 C=24



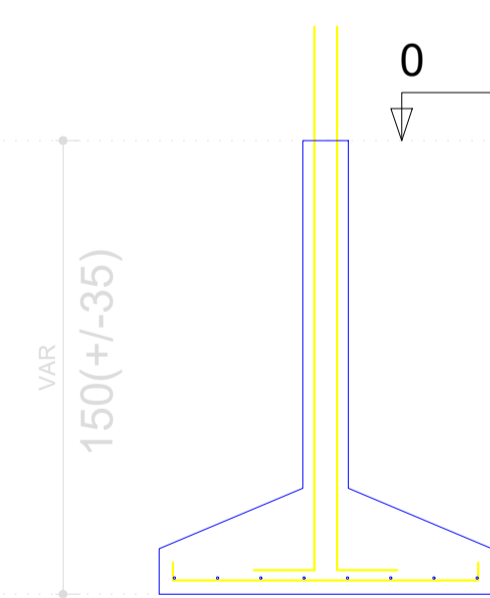
**S43**

PLANTA  
ESC 1:25



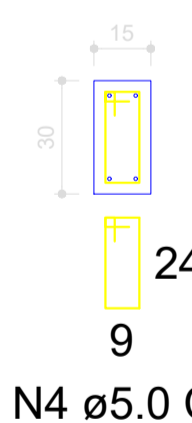
Solo compactado sobre a sapata  
peso específico > 1600.00 kgf/m³

CORTE  
ESC 1:25

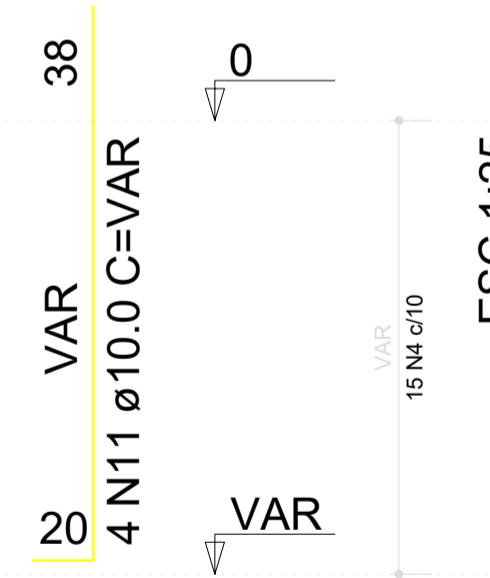


**P43**

FUNDAÇÃO - L1  
ESC 1:20



15 N4 ø5.0 C=77



RESUMO DO AÇO

AÇO	DIAM (mm)	C.TOTAL (m)	PESO + 10% (kg)
CA50	8.0	68.9	29.9
	10.0	32.3	21.9
	12.5	12.6	13.4
CA60	5.0	57	9.7
PESO TOTAL (kg)			
CA50	65.2		
CA60	9.7		

Volume de concreto (C-25) = 1.32 m³  
Área de forma = 9.58 m²

PROJETO: **ESCOLA EDEVAL SUZART COUTINHO**

TÍTULO: **PROJETO ESTRUTURAL**

OBJETO: **SAPATAS**

ENDEREÇO: **ZONA URBANA**

MUNICÍPIO: **IBIRAPITANGA - BA**

RESPONSÁVEL TÉCNICO: **ADEBALDO RODRIGUES DOS SANTOS**  
ENG. CIVIL CREA: 14459/D

ARQUIVO: \_\_\_\_\_ ESC: **INDICADA** DATA: **JULHO/2022**

PRANCHA: **EST06**