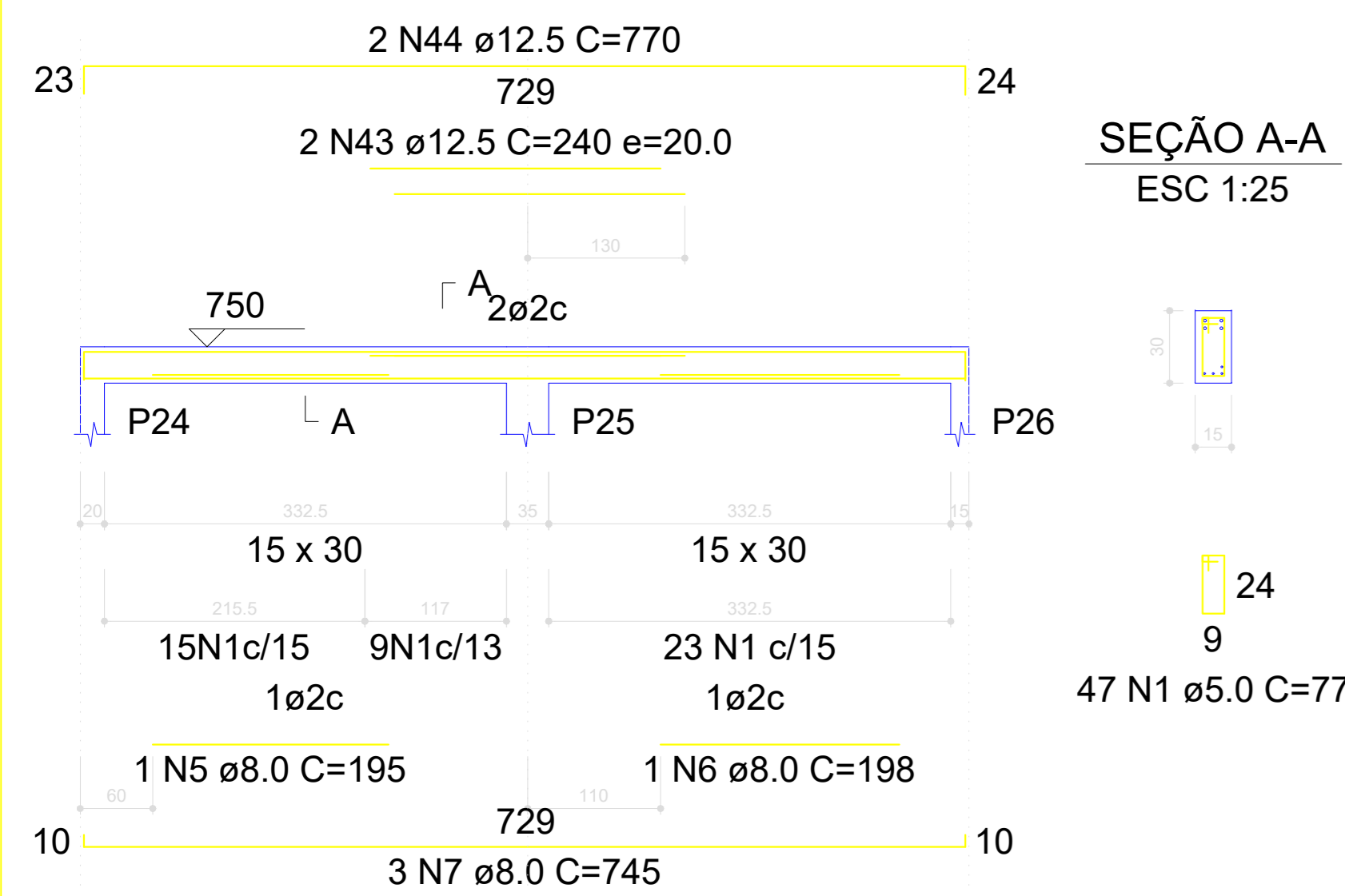


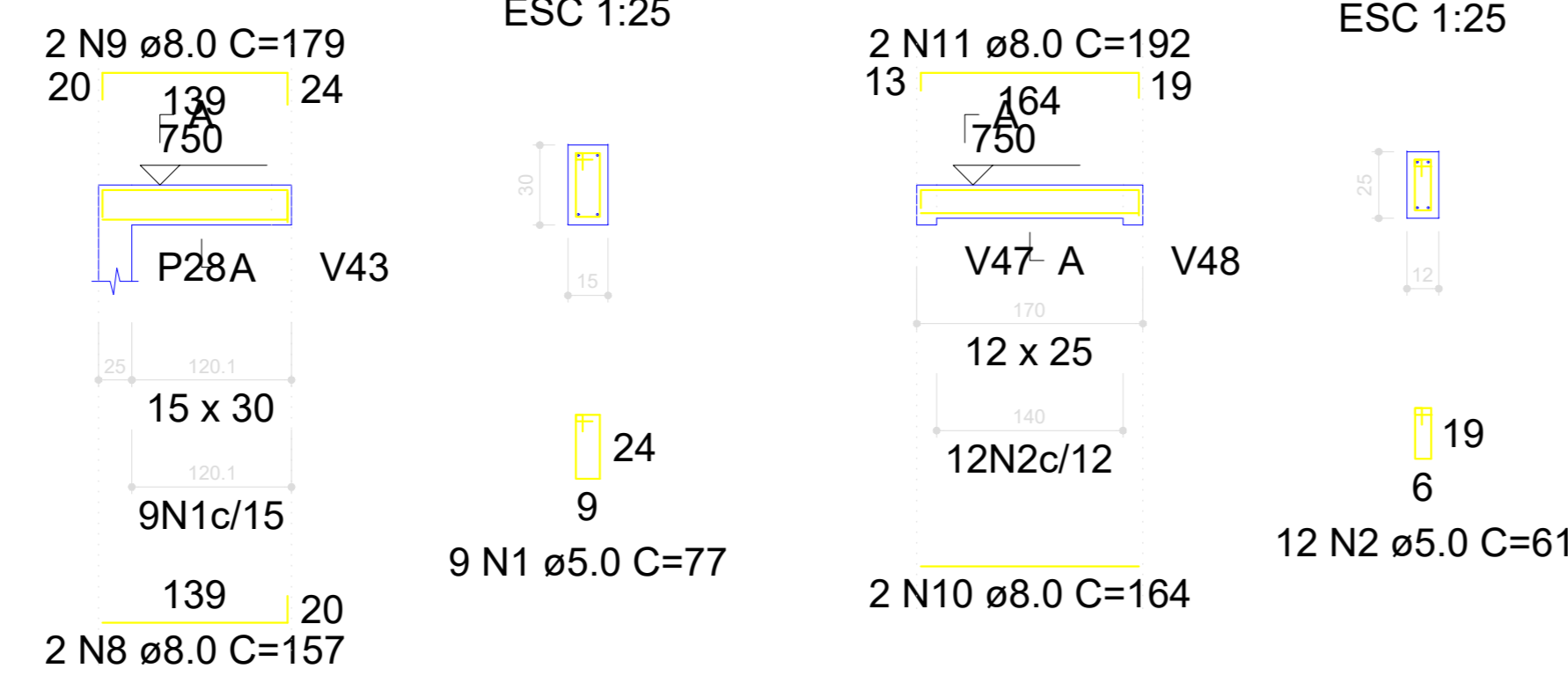
V12

ESC 1:50



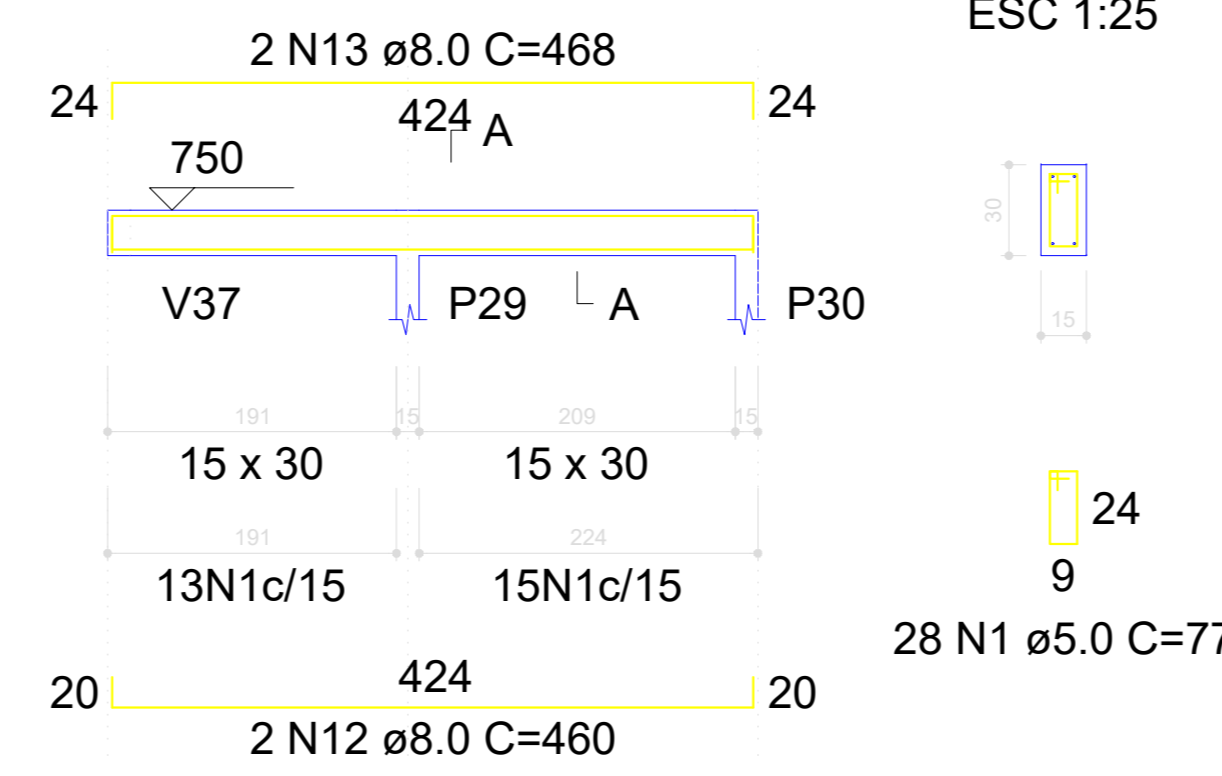
V13

ESC 1:50



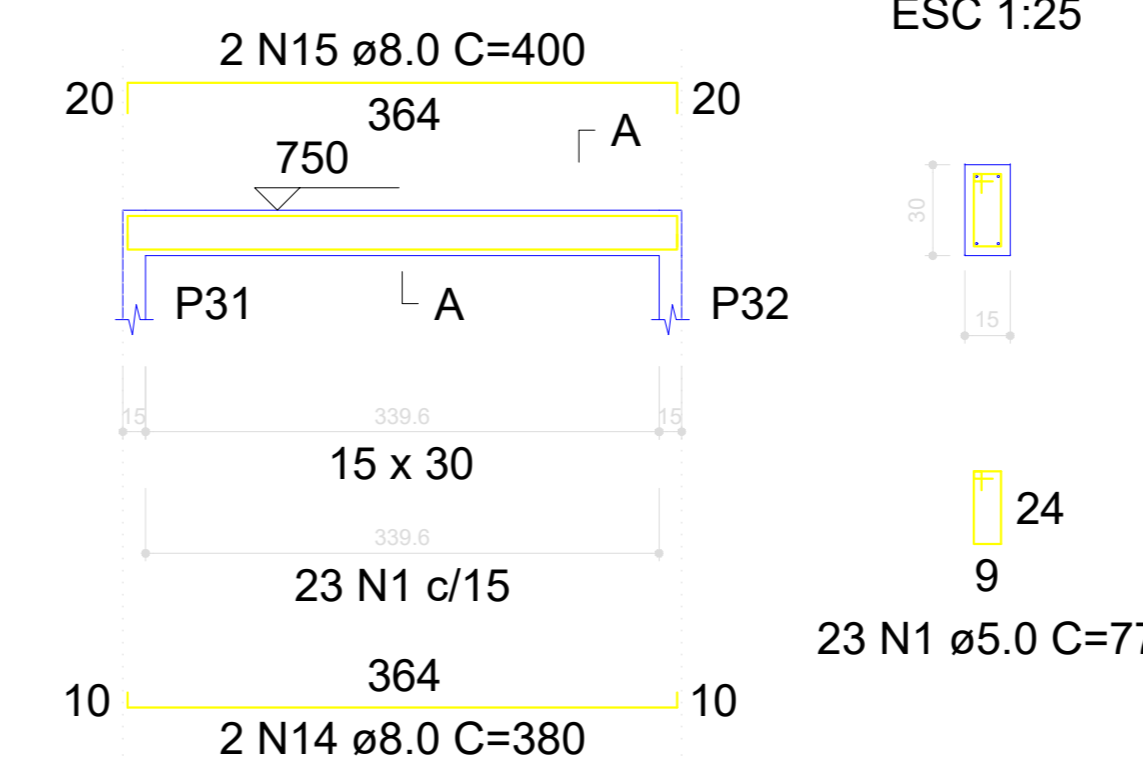
V15

ESC 1:50



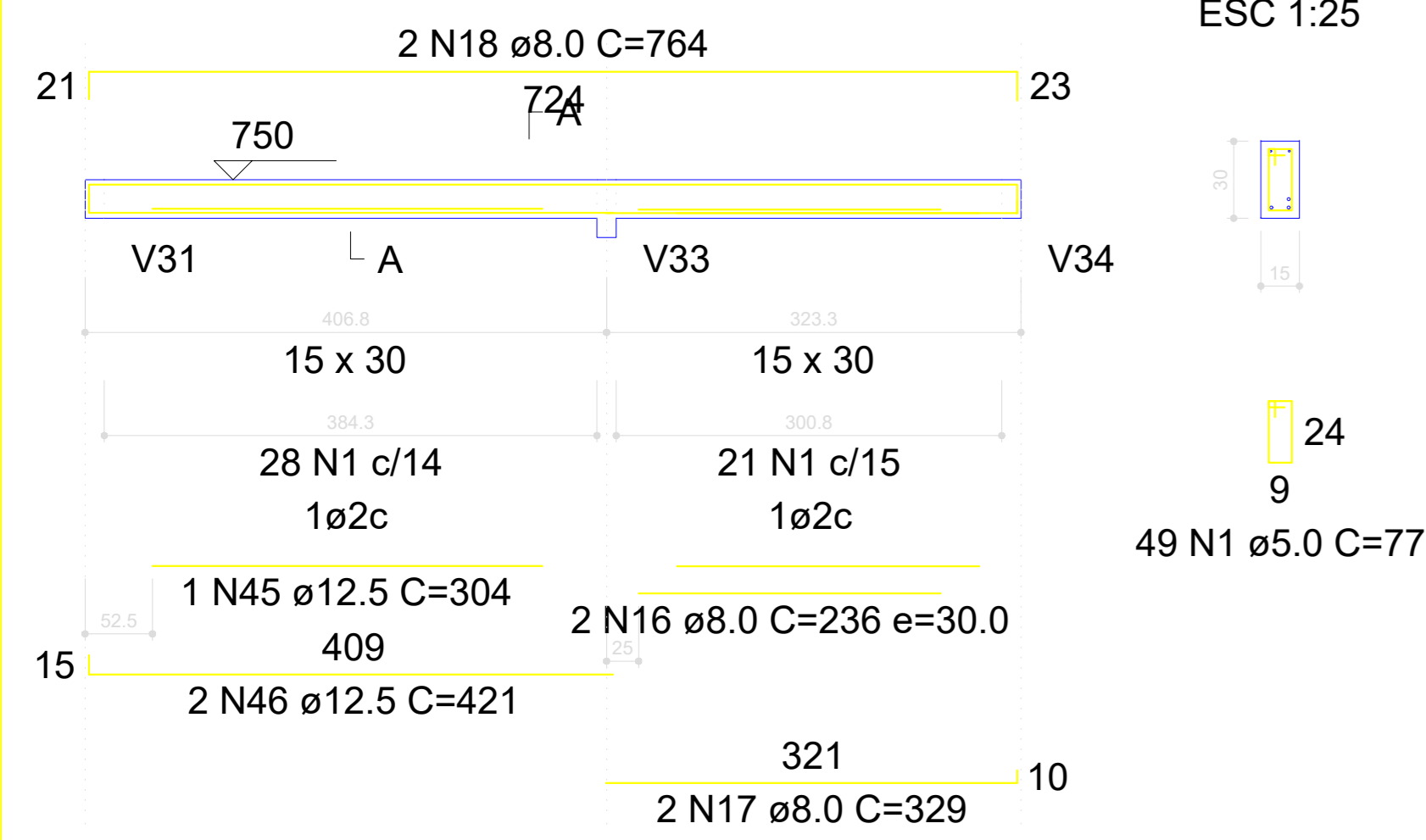
V16

ESC 1:50



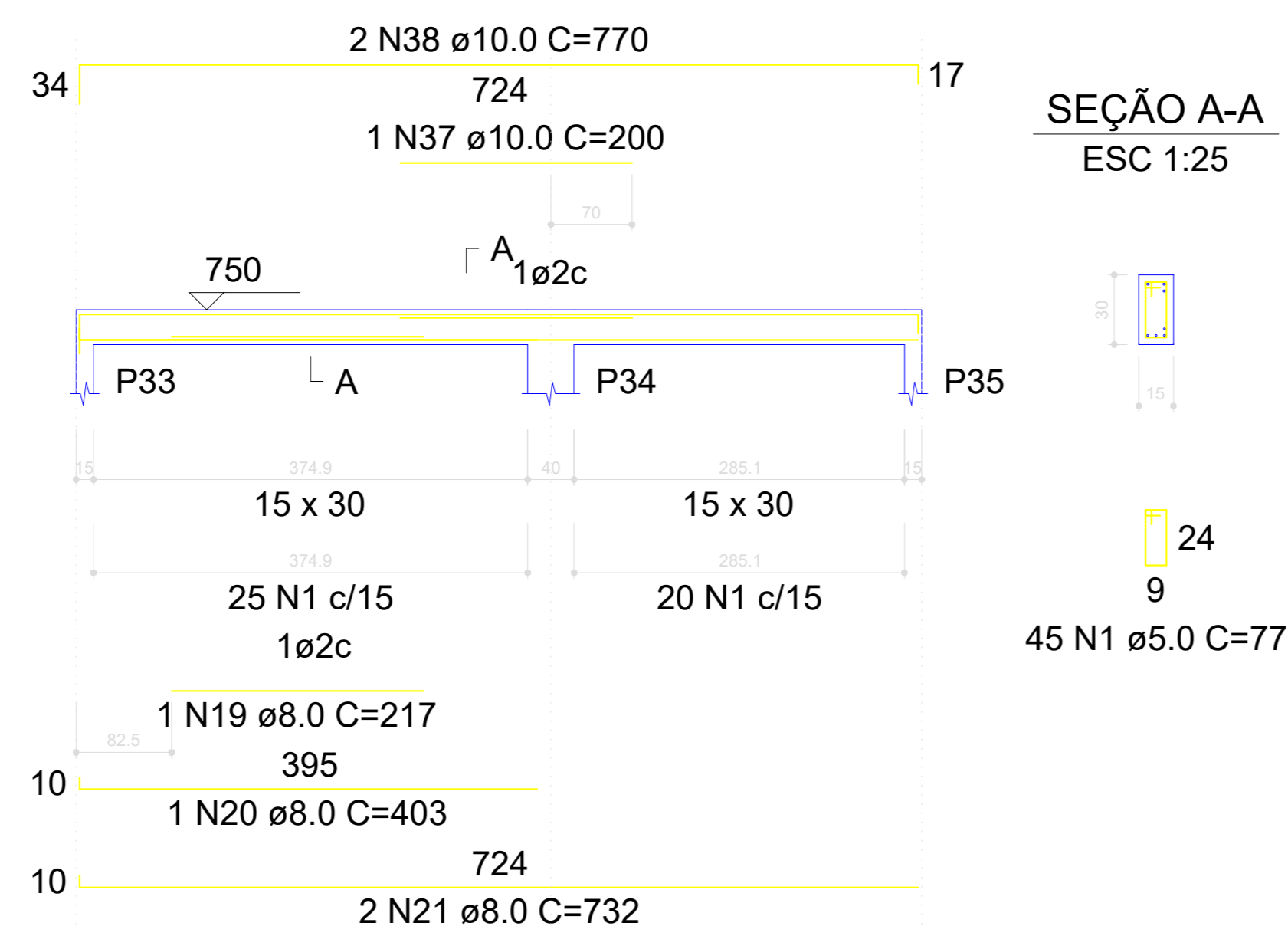
V17

ESC 1:50



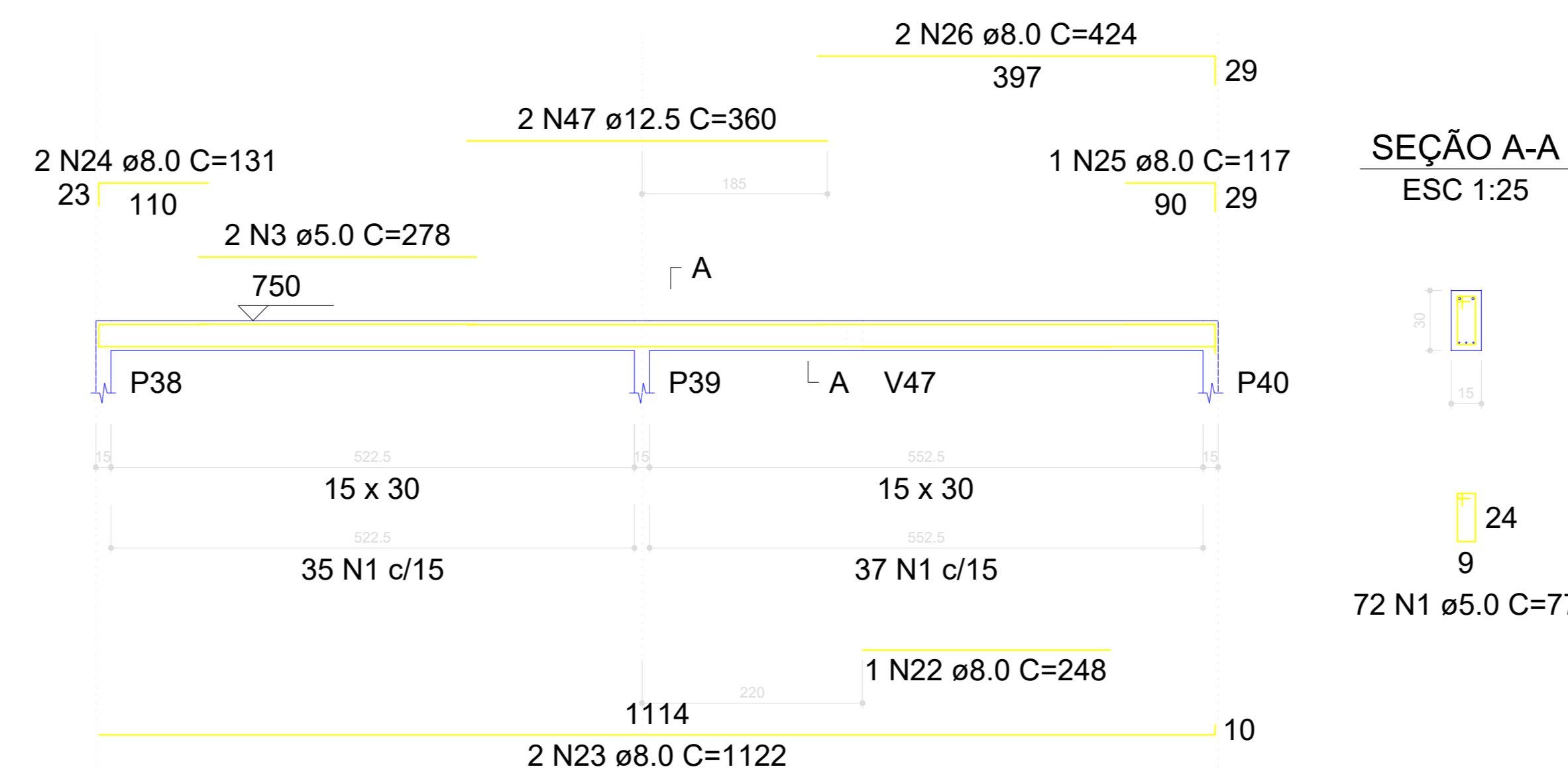
V18

ESC 1:50



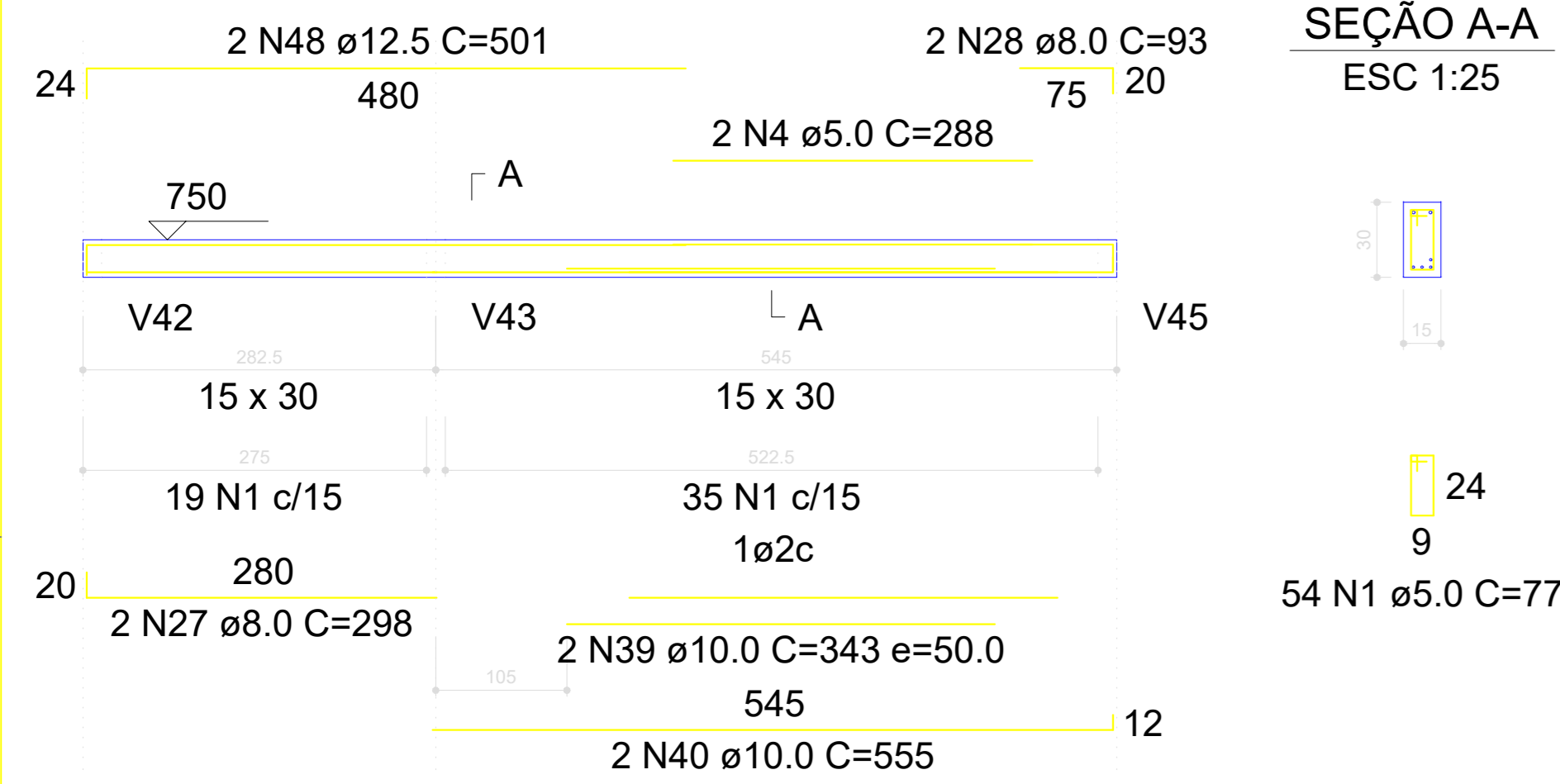
V20

ESC 1:50



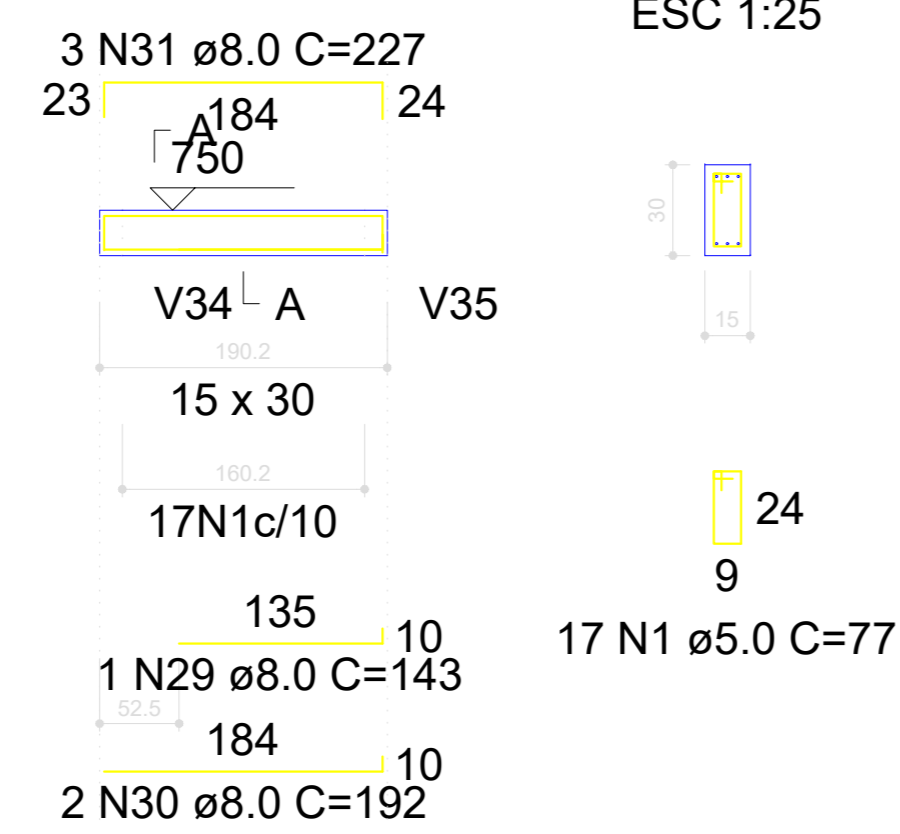
V21

ESC 1:50



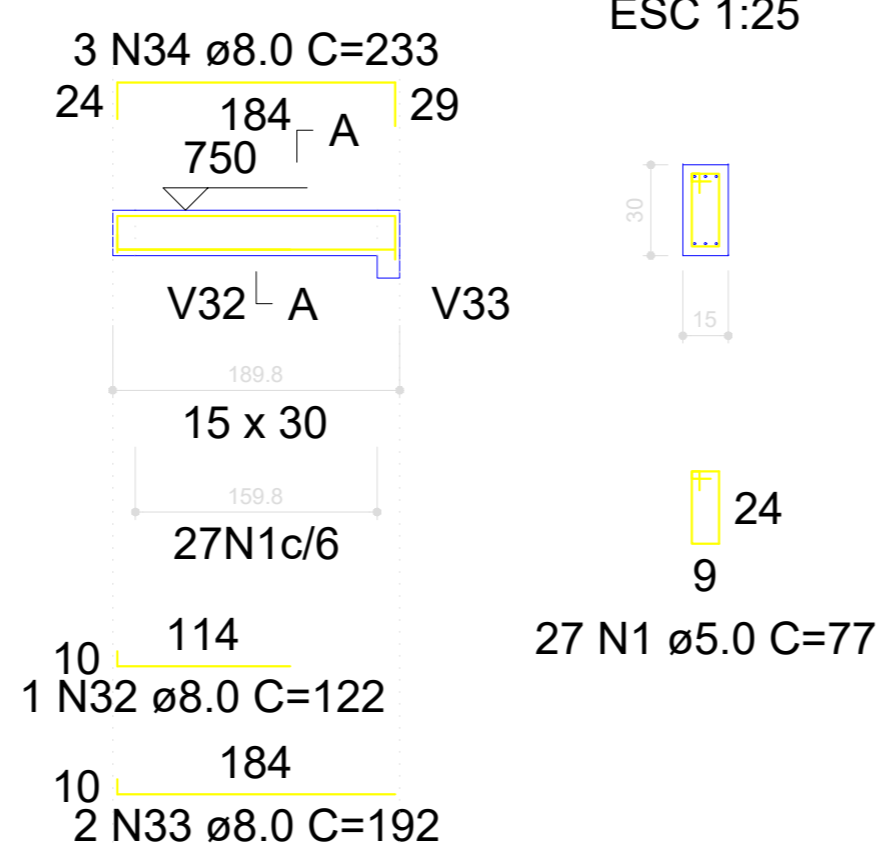
V22

ESC 1:50



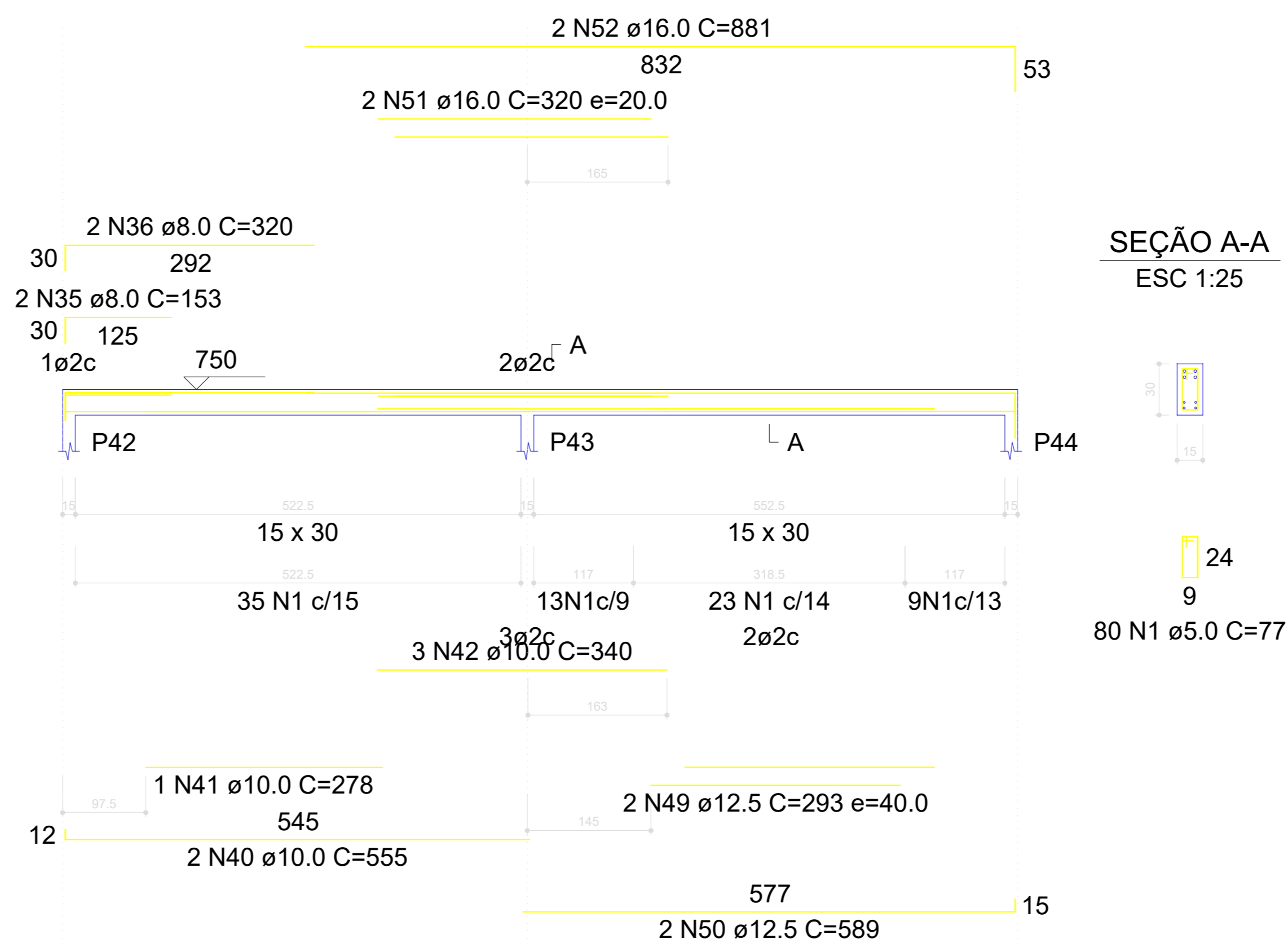
V24

ESC 1:50



V25

ESC 1:50



RELAÇÃO DO AÇO

AÇO	N	DIAM (mm)	QUANT	C.UNIT (cm)	C.TOTAL (cm)
V12					
V15					
V18					
V22					
V13					
V16					
V20					
V24					
V14					
V17					
V21					
V25					
CA60	1	5.0	451	77	34727
	2	5.0	12	61	732
	3	5.0	2	278	556
	4	5.0	2	288	576
CA50	5	8.0	1	195	195
	6	8.0	1	198	198
	7	8.0	3	745	2235
	8	8.0	2	157	314
	9	8.0	2	179	358
	10	8.0	2	164	328
	11	8.0	2	192	384
	12	8.0	2	460	920
	13	8.0	2	468	936
	14	8.0	2	380	760
	15	8.0	2	400	800
	16	8.0	2	236	472
	17	8.0	2	329	658
	18	8.0	2	764	1528
	19	8.0	1	217	217
	20	8.0	1	403	403
	21	8.0	2	732	1464
	22	8.0	1	248	248
	23	8.0	2	1122	2244
	24	8.0	2	131	262
	25	8.0	1	117	117
	26	8.0	2	424	848
	27	8.0	2	298	596
	28	8.0	2	93	186
	29	8.0	1	143	143
	30	8.0	2	192	384
	31	8.0	3	227	681
	32	8.0	1	122	122
	33	8.0	2	192	384
	34	8.0	3	233	699
	35	8.0	2	153	306
	36	8.0	2	320	640
	37	10.0	1	200	200
	38	10.0	2	770	1540
	39	10.0	2	343	686
	40	10.0	4	555	2220
	41	10.0	1	278	278
	42	10.0	3	340	1020
	43	12.5	2	240	480
	44	12.5	2	770	1540
	45	12.5	1	304	304
	46	12.5	2	421	842
	47	12.5	2	360	720
	48	12.5	2	501	1002
	49	12.5	2	293	586
	50	12.5	2	589	1178
	51	16.0	2	320	640
	52	16.0	2	881	1762

RESUMO DO AÇO

AÇO	DIAM (mm)	C.TOTAL (m)	PESO + 10% (kg)
CA50	8.0	200.3	86.9
	10.0	59.4	40.3
	12.5	66.5	70.5
	16.0	24	41.7
CA60	5.0	365.9	62

PESO TOTAL (kg)

CA50	239.4
CA60	62

Volume de concreto (C-25) = 3.02 m³
Área de forma = 50.46 m²

PROJETO: **ESCOLA EDEVAL SUZART COUTINHO**

TÍTULO: **PROJETO ESTRUTURAL**

ENDEREÇO: **ZONA URBANA** OBJETO: **VIGAS**

MUNICÍPIO: **IBIRAPITANGA - BA**

RESPONSÁVEL TÉCNICO: **ADEBALDO RODRIGUES DOS SANTOS** ART: **18429/D** PRANCHAS: **EST16**

ARQUIVO: **ESC. INDICADA** DATA: **JULHO/2022**