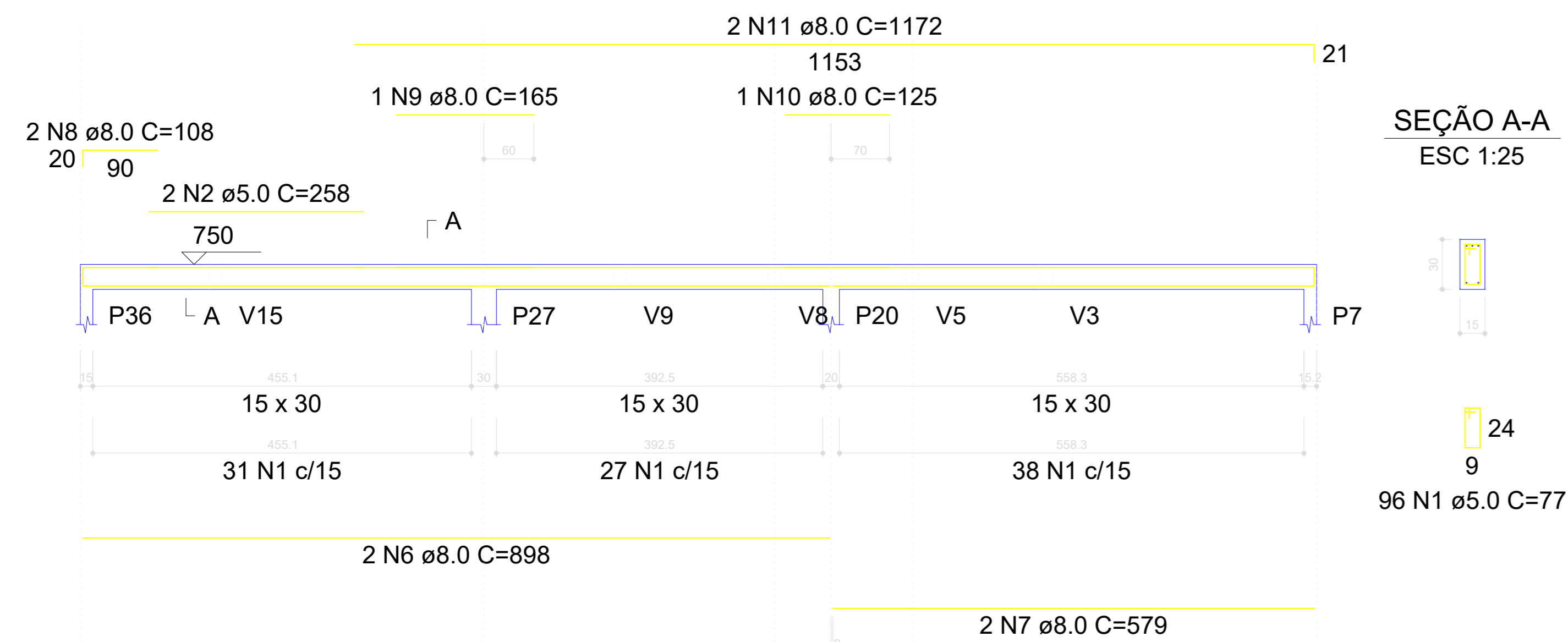
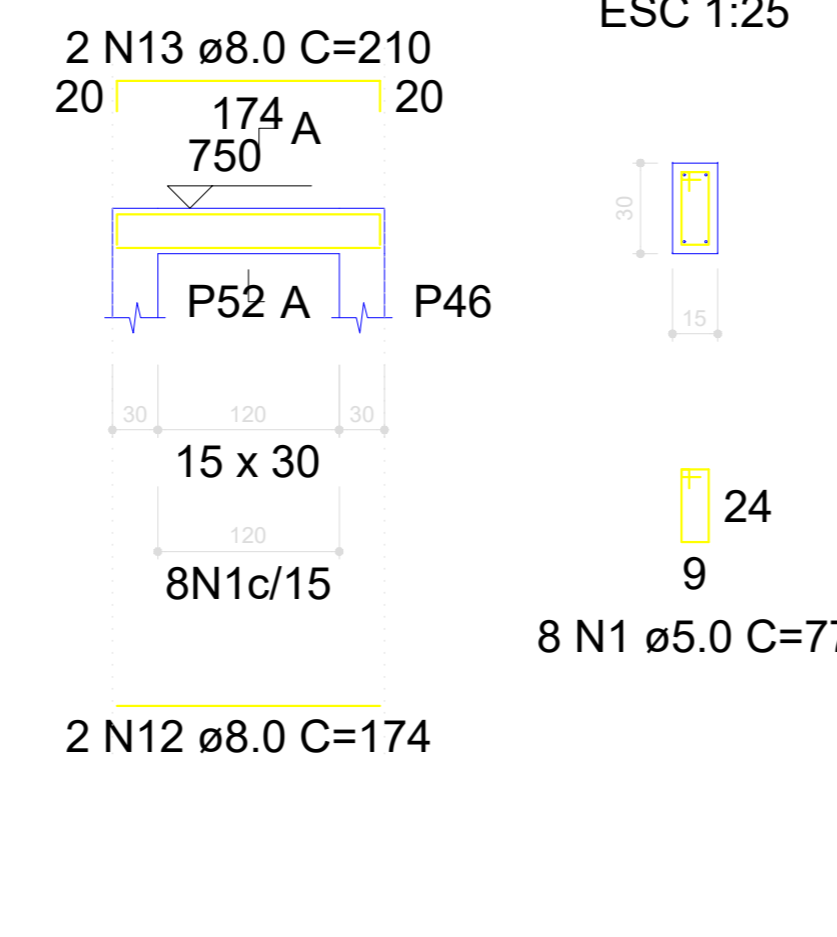


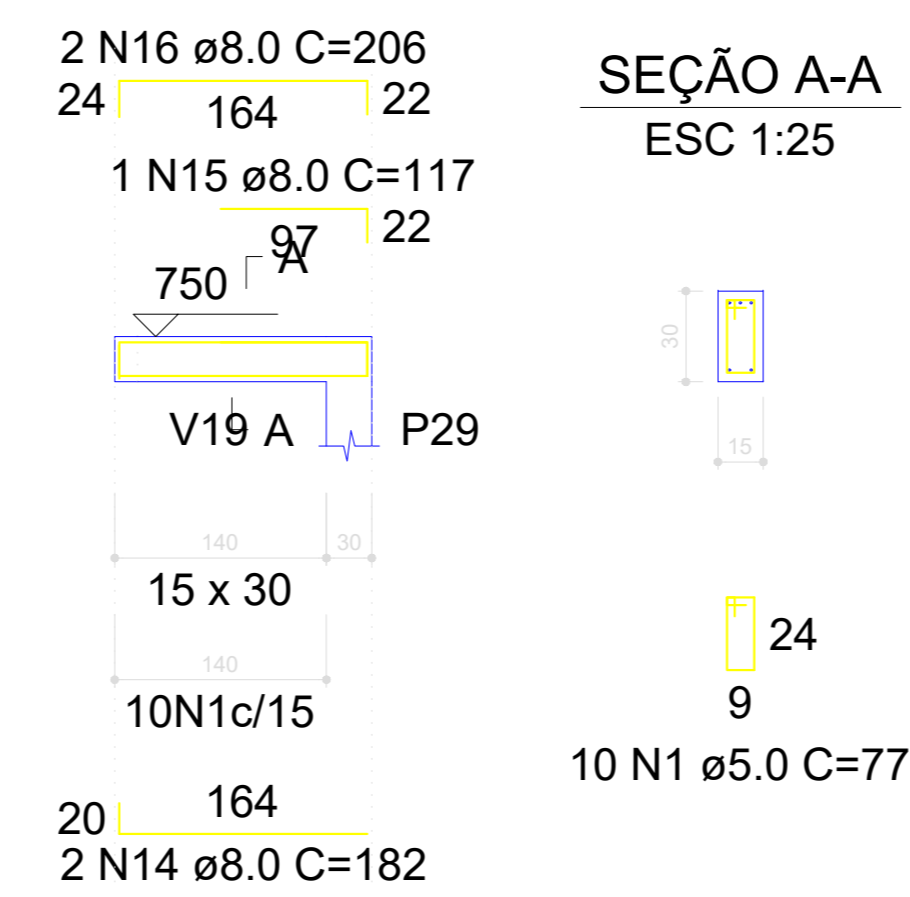
**V37**  
ESC 1:50



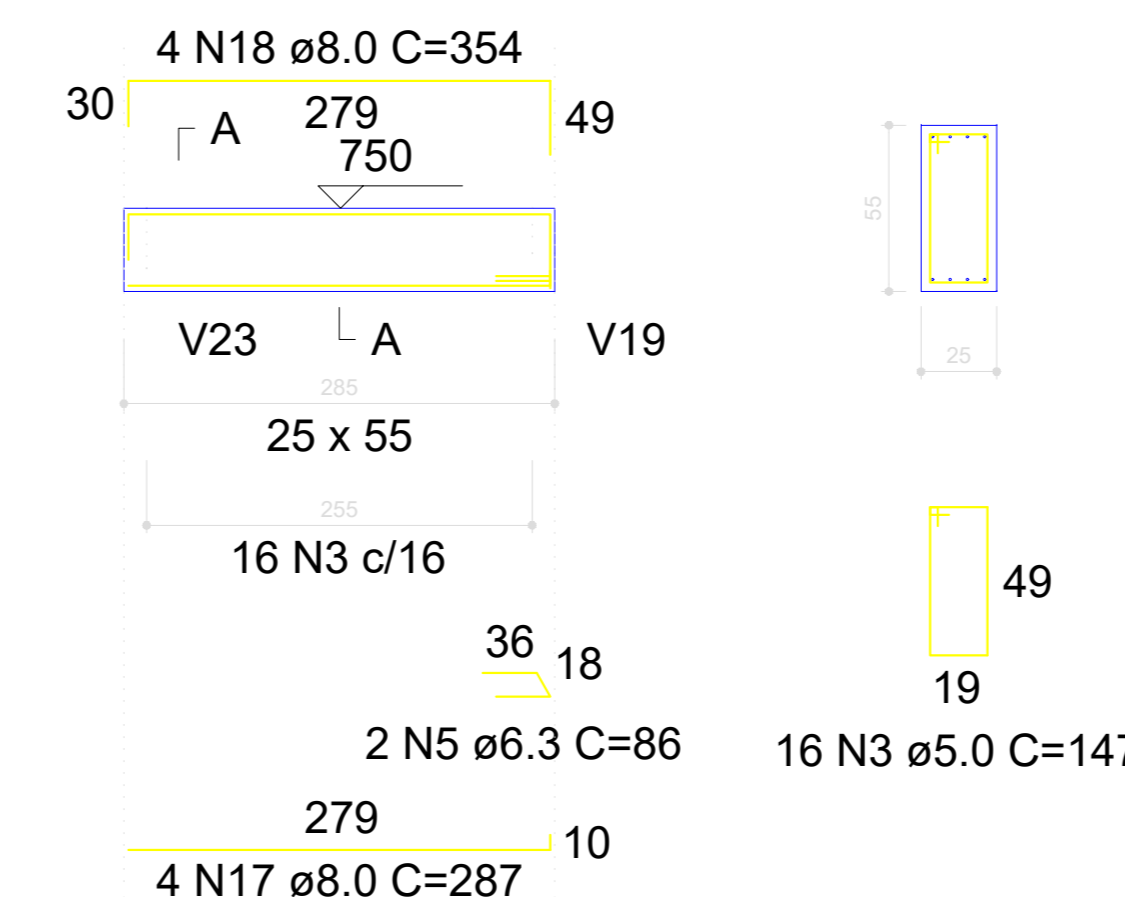
**V38**  
ESC 1:50



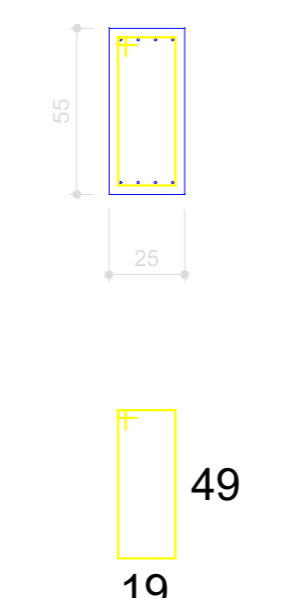
**V40**  
ESC 1:50



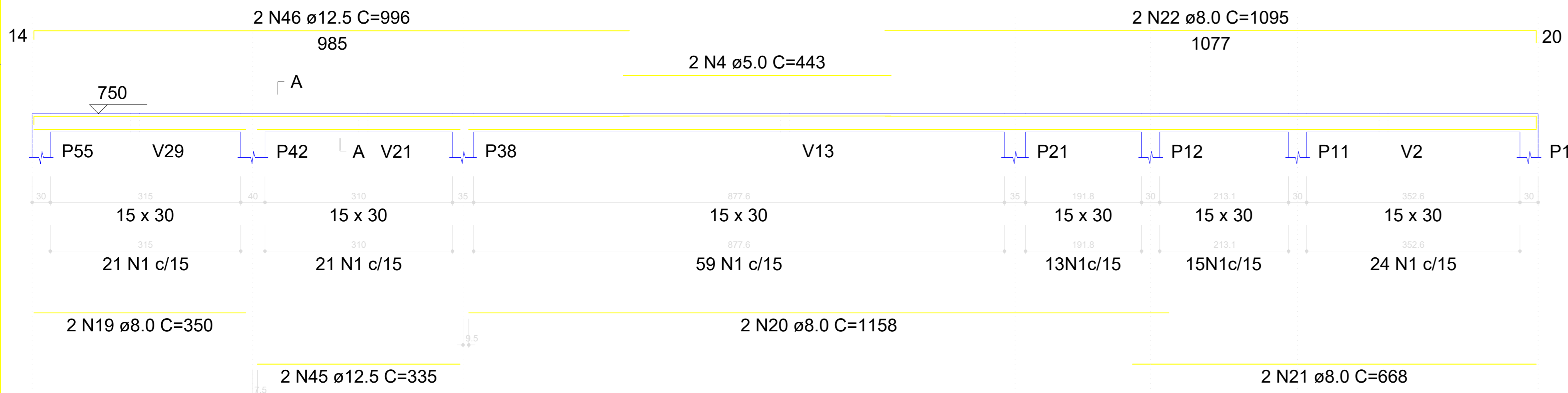
**V41**  
ESC 1:50



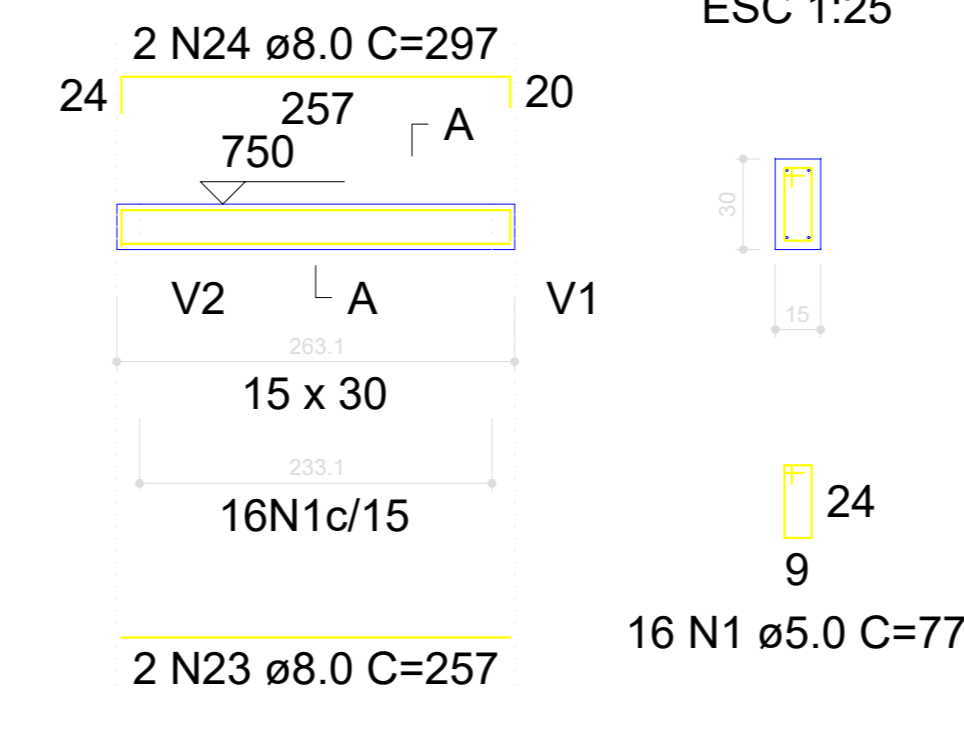
SEÇÃO A-A  
ESC 1:25



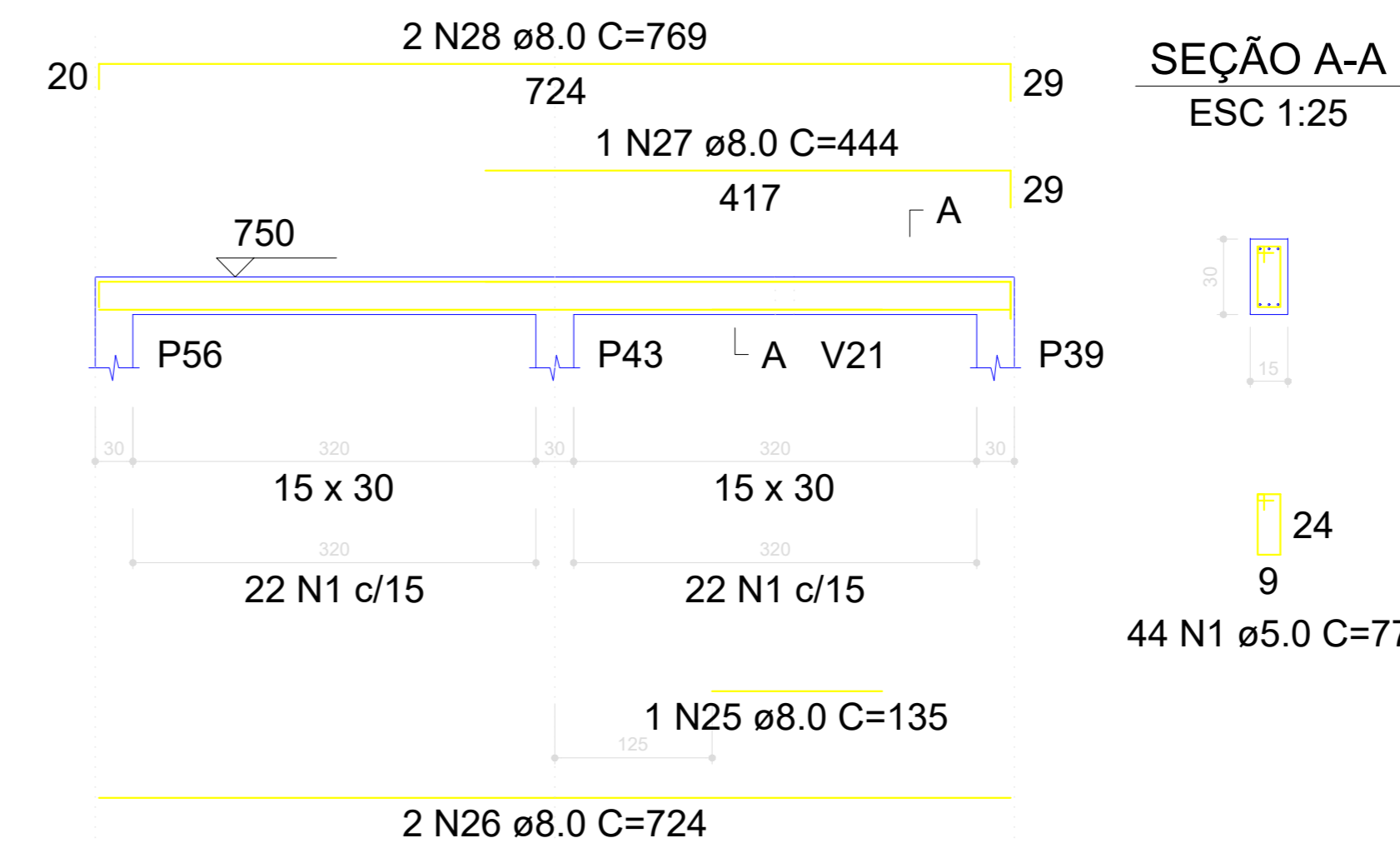
**V43**  
ESC 1:50



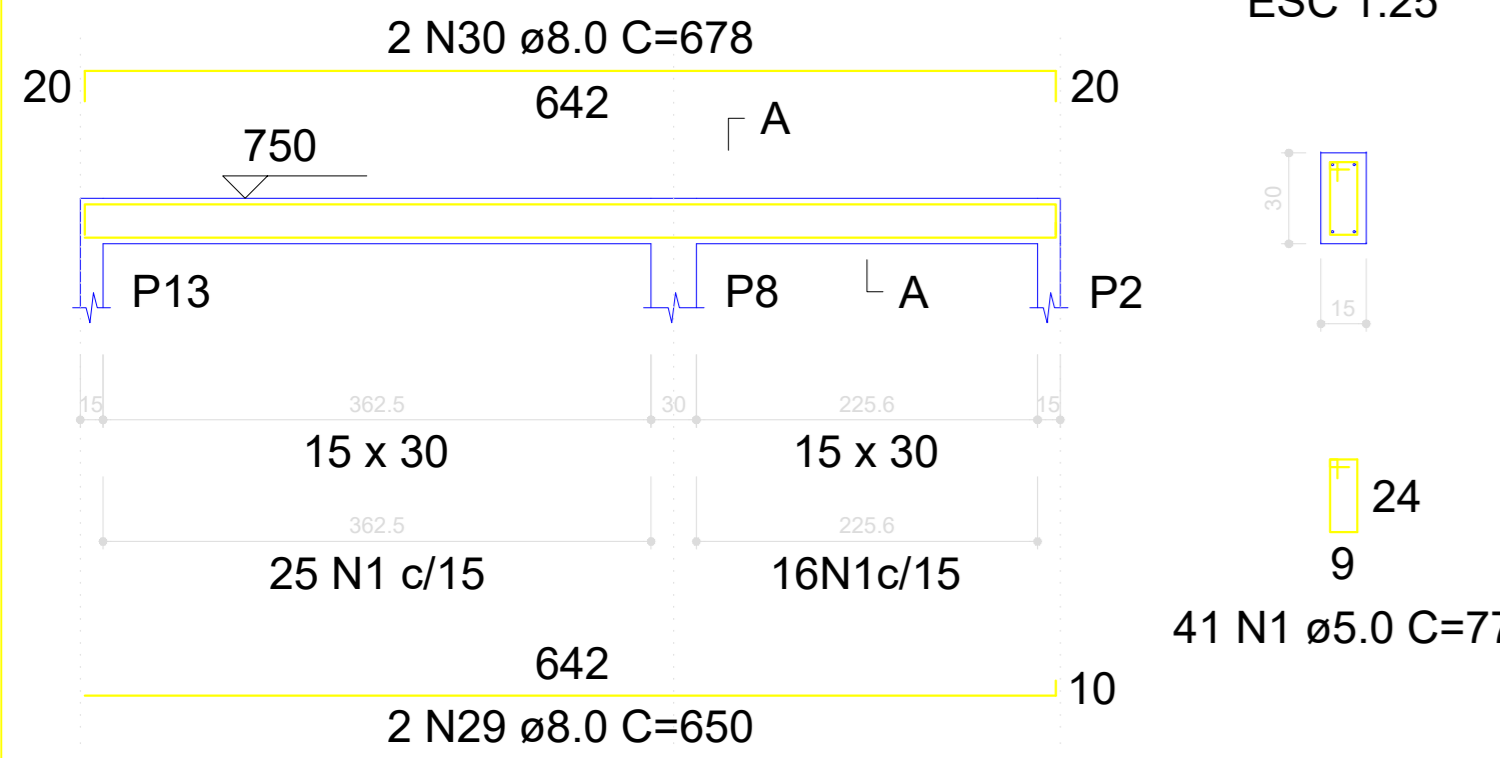
**V44**  
ESC 1:50



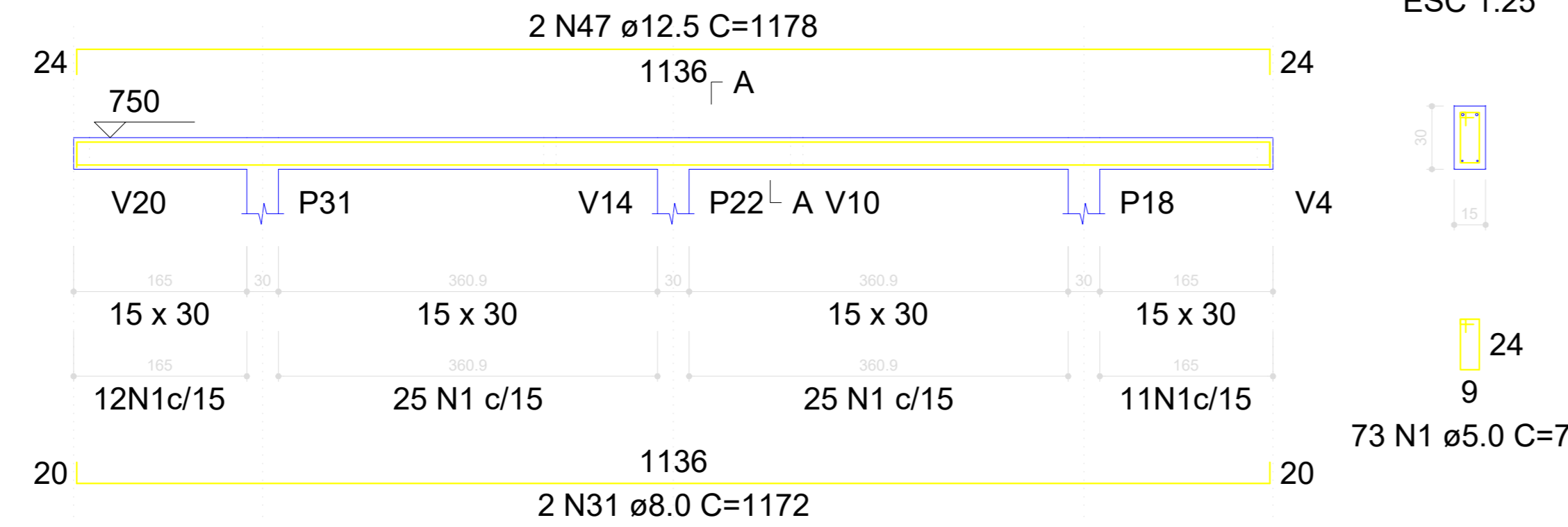
**V45**  
ESC 1:50



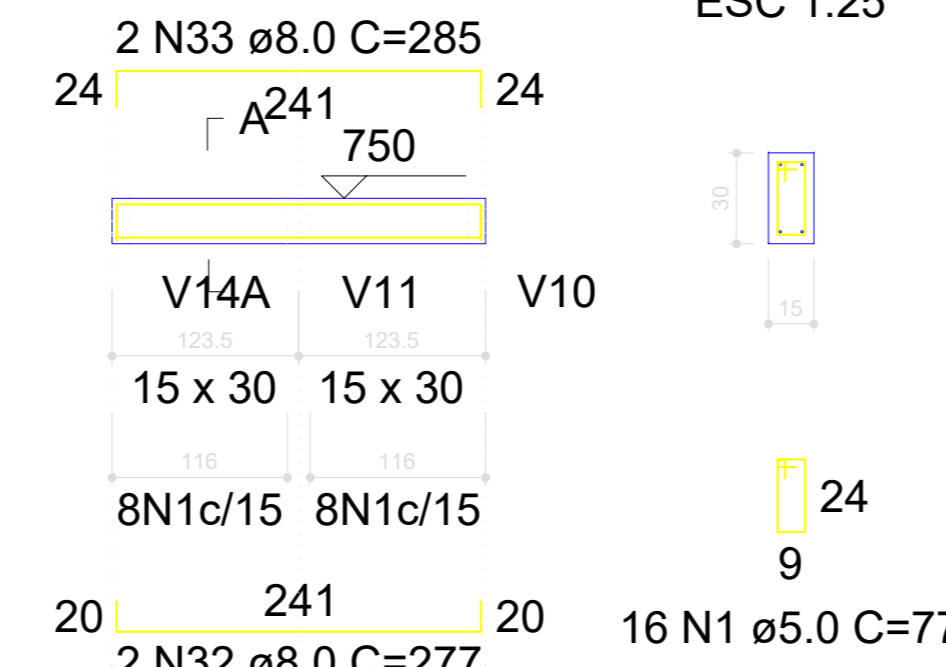
**V46**  
ESC 1:50



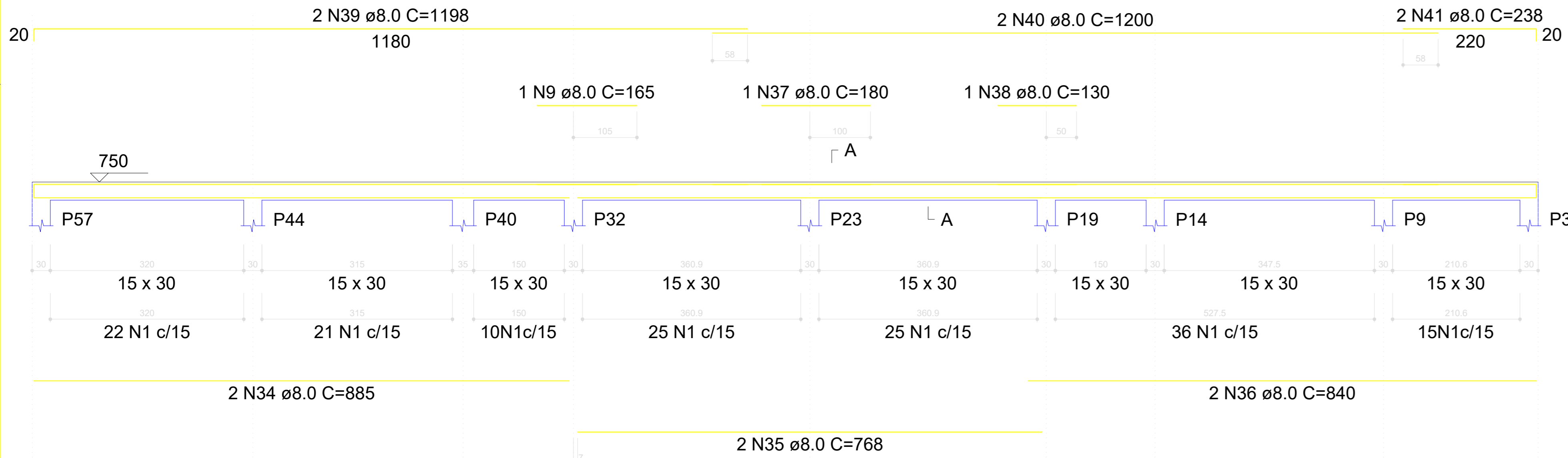
**V47**  
ESC 1:50



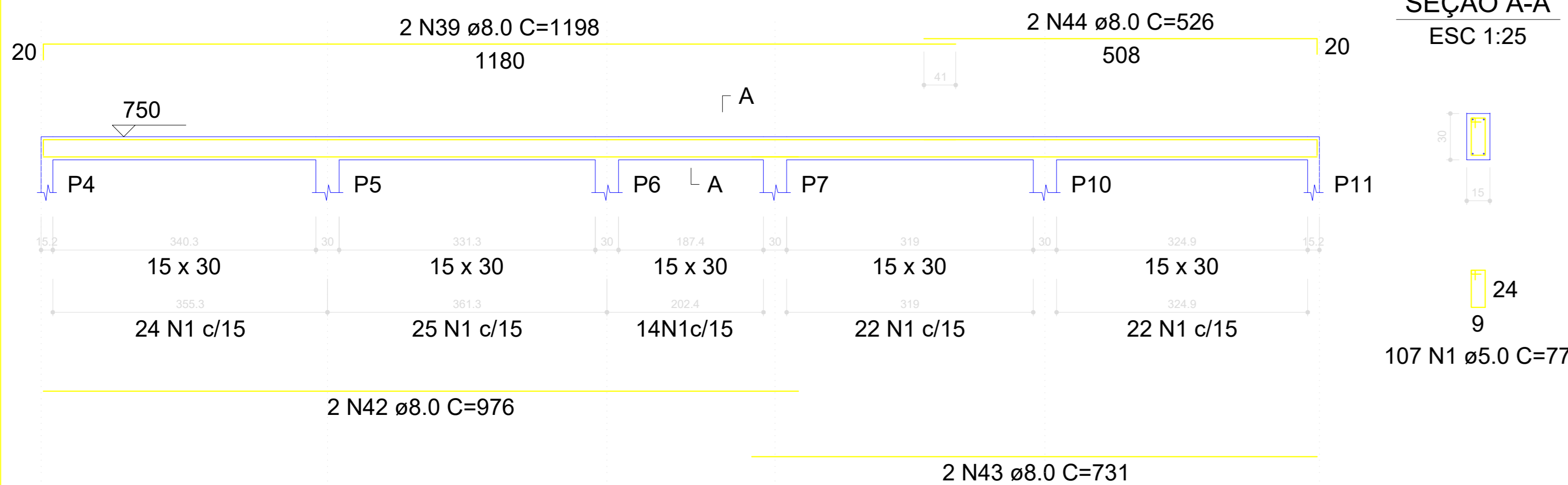
**V48**  
ESC 1:50



**V49**  
ESC 1:50



**V50**  
ESC 1:50



RELAÇÃO DO AÇO

AÇO	N	DIAM (mm)	QUANT	C.UNIT (cm)	C.TOTAL (cm)
CA60	1	5.0	718	77	55286
	2	5.0	2	258	516
	3	5.0	16	147	2352
	4	5.0	2	443	886
CA50	5	6.3	2	86	172
	6	8.0	2	898	1796
	7	8.0	2	579	1158
	8	8.0	2	108	216
	9	8.0	2	165	330
	10	8.0	1	125	125
	11	8.0	2	1172	2344
	12	8.0	2	174	348
	13	8.0	2	210	420
	14	8.0	2	182	364
	15	8.0	1	117	117
	16	8.0	2	206	412
	17	8.0	4	287	1148
	18	8.0	4	354	1416
	19	8.0	2	350	700
	20	8.0	2	1158	2316
	21	8.0	2	668	1336
	22	8.0	2	1095	2190
	23	8.0	2	257	514
	24	8.0	2	297	594
	25	8.0	1	135	135
	26	8.0	2	724	1448
	27	8.0	1	444	444
	28	8.0	2	769	1538
	29	8.0	2	650	1300
	30	8.0	2	678	1356
	31	8.0	2	1172	2344
	32	8.0	2	277	554
	33	8.0	2	285	570
	34	8.0	2	885	1770
	35	8.0	2	768	1536
	36	8.0	2	840	1680
	37	8.0	1	180	180
	38	8.0	1	130	130
	39	8.0	4	1198	4792
	40	8.0	2	1200	2400
	41	8.0	2	238	476
	42	8.0	2	976	1952
	43	8.0	2	731	1462
	44	8.0	2	526	1052
	45	12.5	2	335	670
	46	12.5	2	996	1992
	47	12.5	2	1178	2356

RESUMO DO AÇO

AÇO	DIAM (mm)	C.TOTAL (m)	PESO + 10% (kg)
CA50	6.3	1.7	0.5
	8.0	449.6	195.2
	12.5	50.2	53.2
CA60	5.0	590.4	100.1
PESO TOTAL (kg)			
CA50		248.8	
CA60		100.1	

Volume de concreto (C-25) = 5.57 m³  
Área de forma = 90.09 m²

PROJETO: **ESCOLA EDEVAL SUZART COUTINHO**

TÍTULO: **PROJETO ESTRUTURAL**

ENDEREÇO: **ZONA URBANA** | OBJETO: **LOCAÇÃO**

MUNICÍPIO: **IBIRAPITANGA - BA**

RESPONSÁVEL TÉCNICO: **ADEBALDO RODRIGUES DOS SANTOS** | ART: **144980** | PRANCHIA: **EST18**

ARQUIVO: **ESC. INDICADA** | DATA: **JULHO/2022**