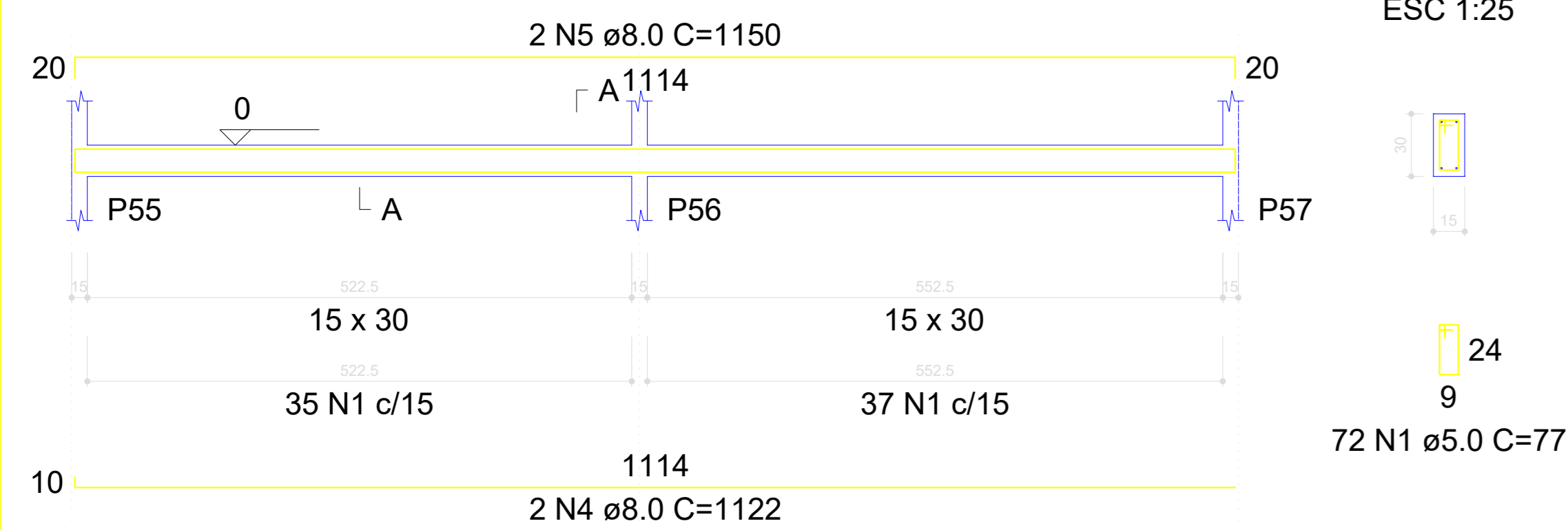
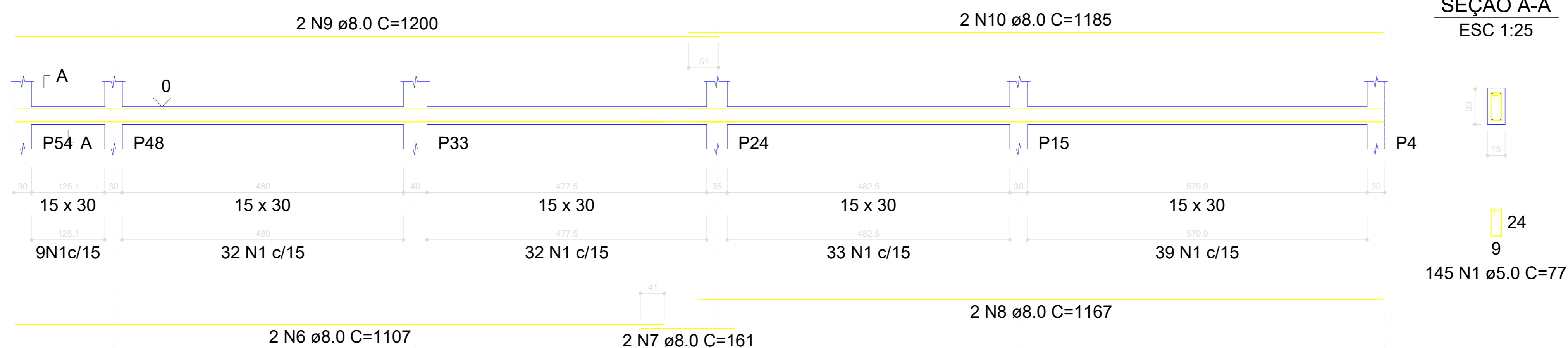


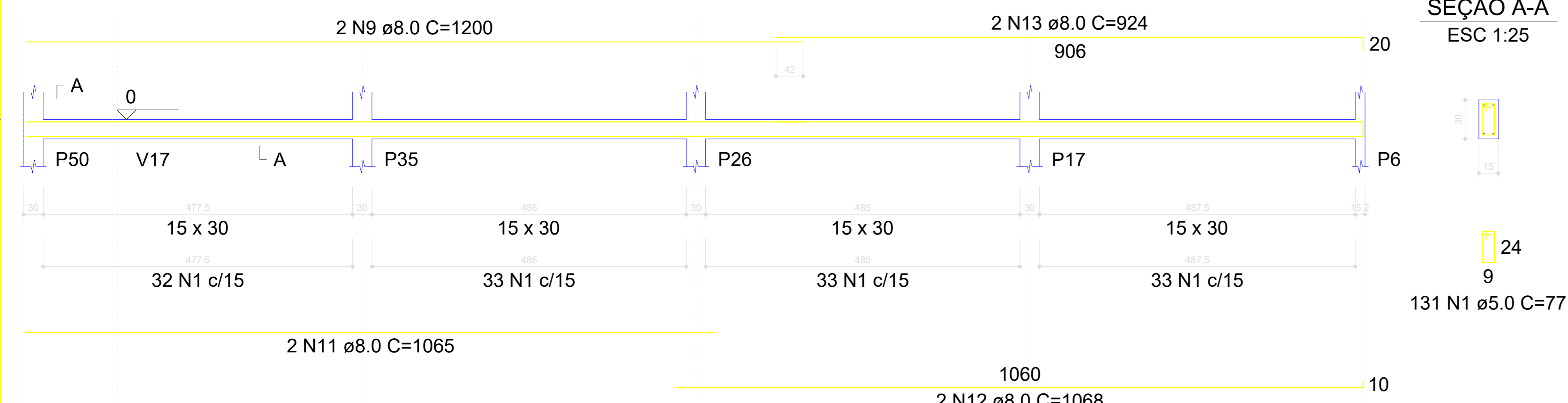
V21
ESC 1:50



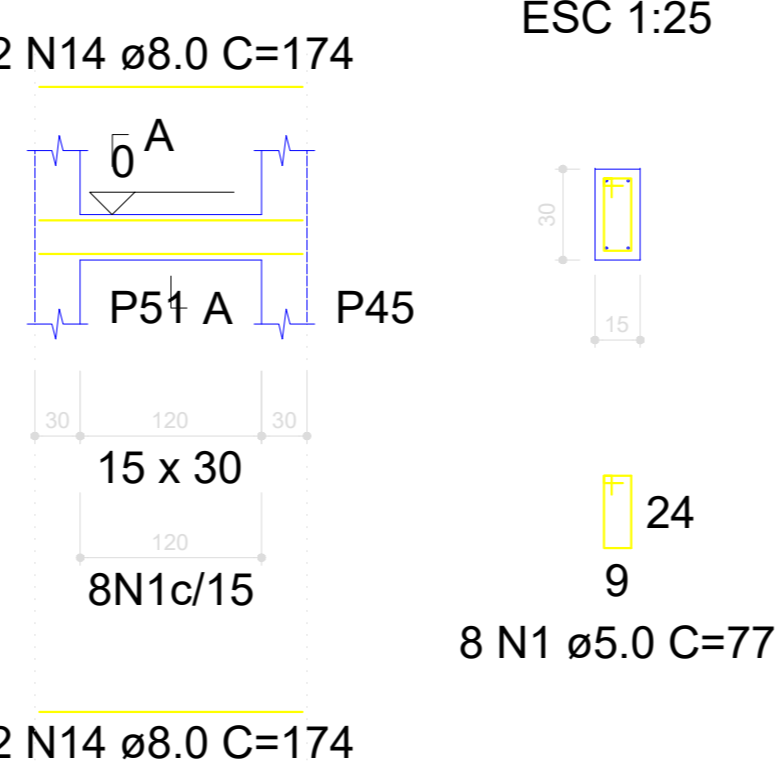
V22
ESC 1:50



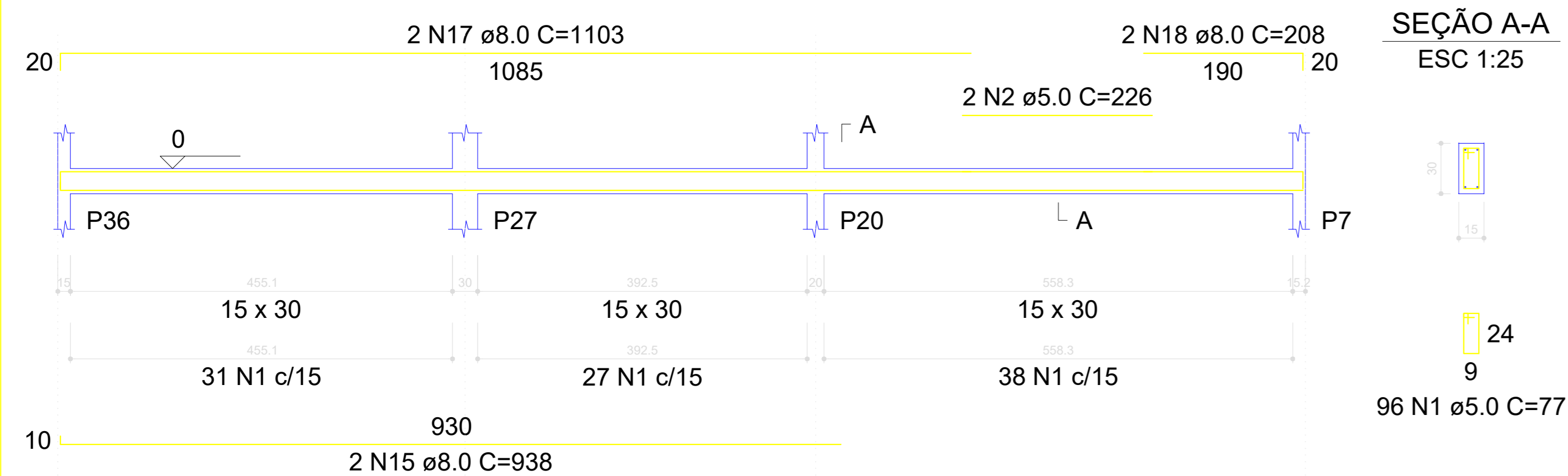
V23
ESC 1:50



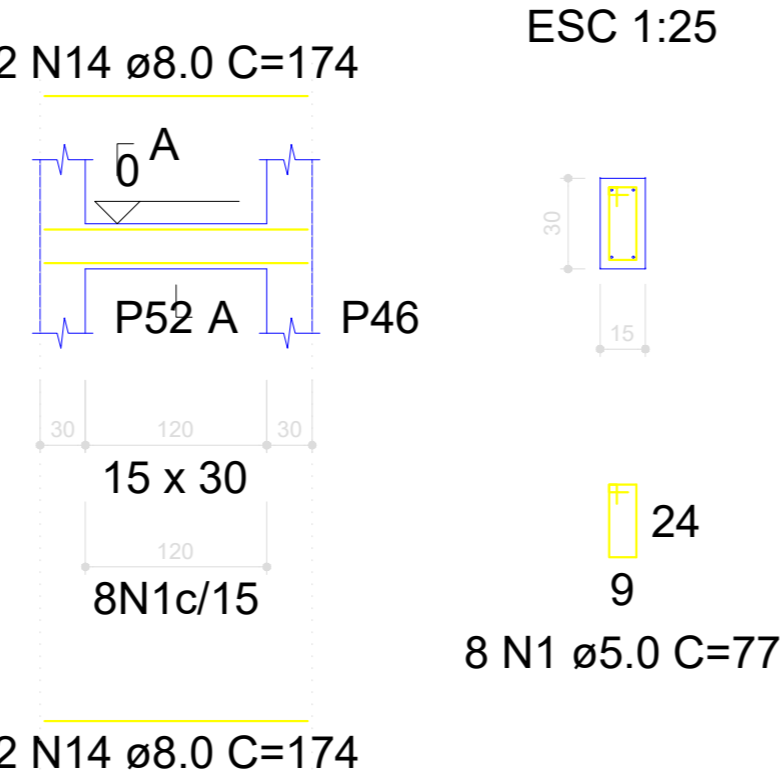
V24
ESC 1:50



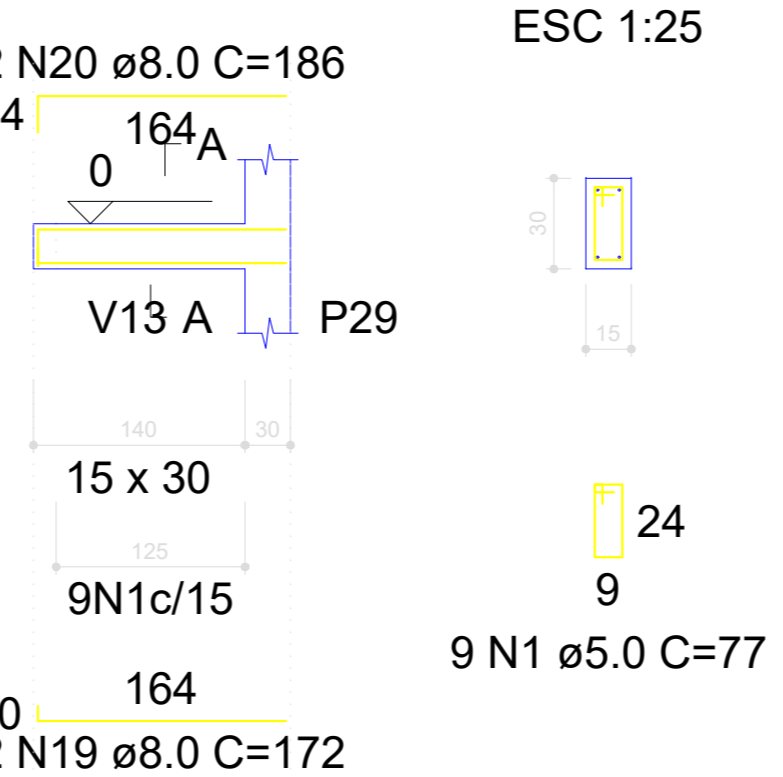
V25
ESC 1:50



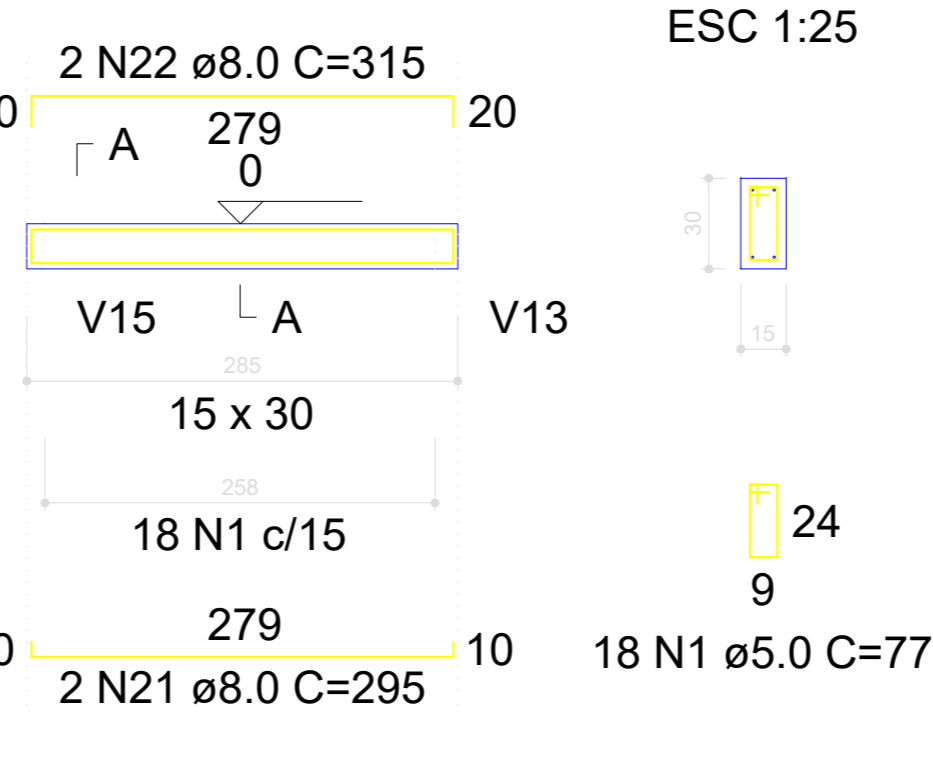
V26
ESC 1:50



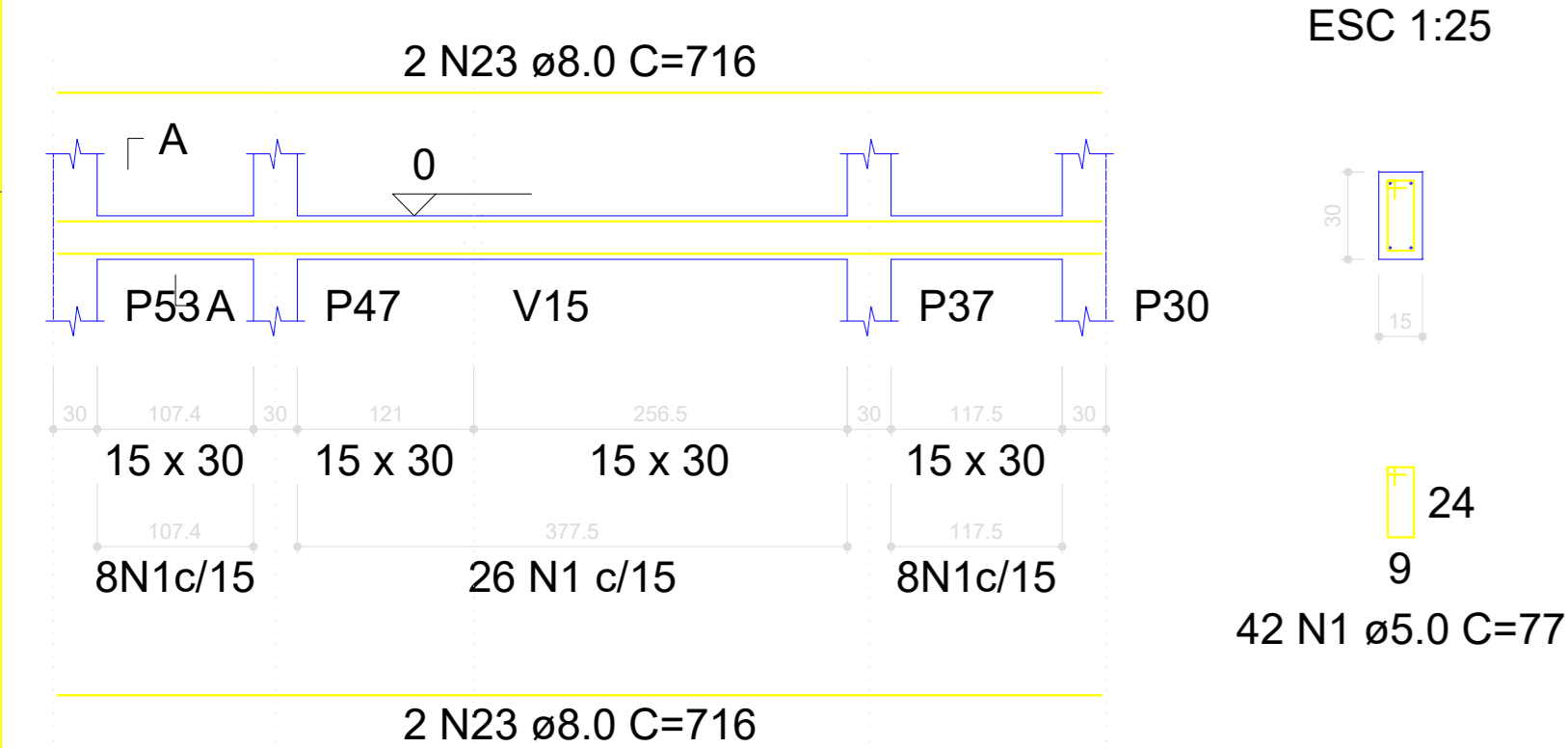
V27
ESC 1:50



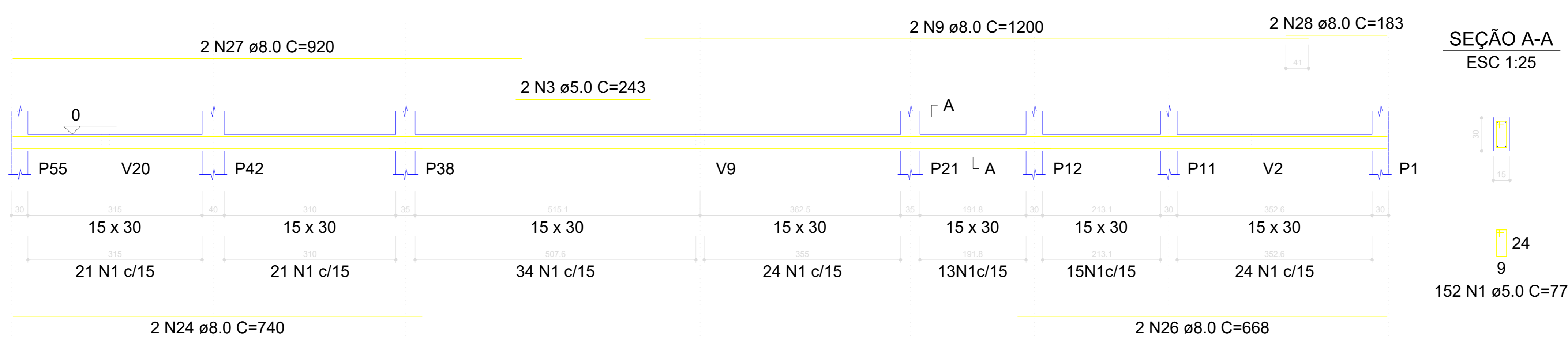
V28
ESC 1:50



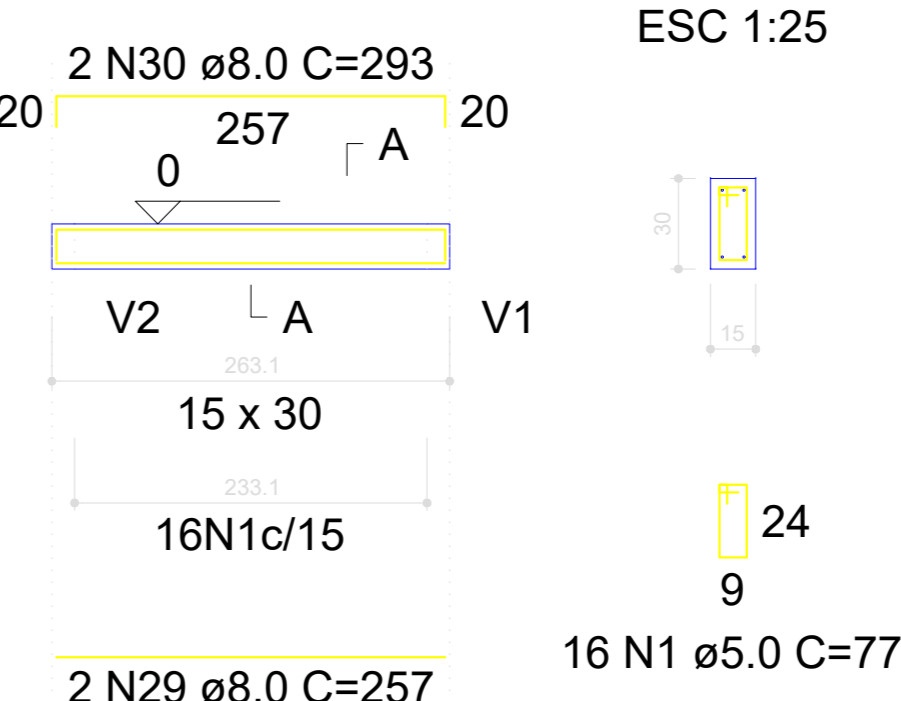
V29
ESC 1:50



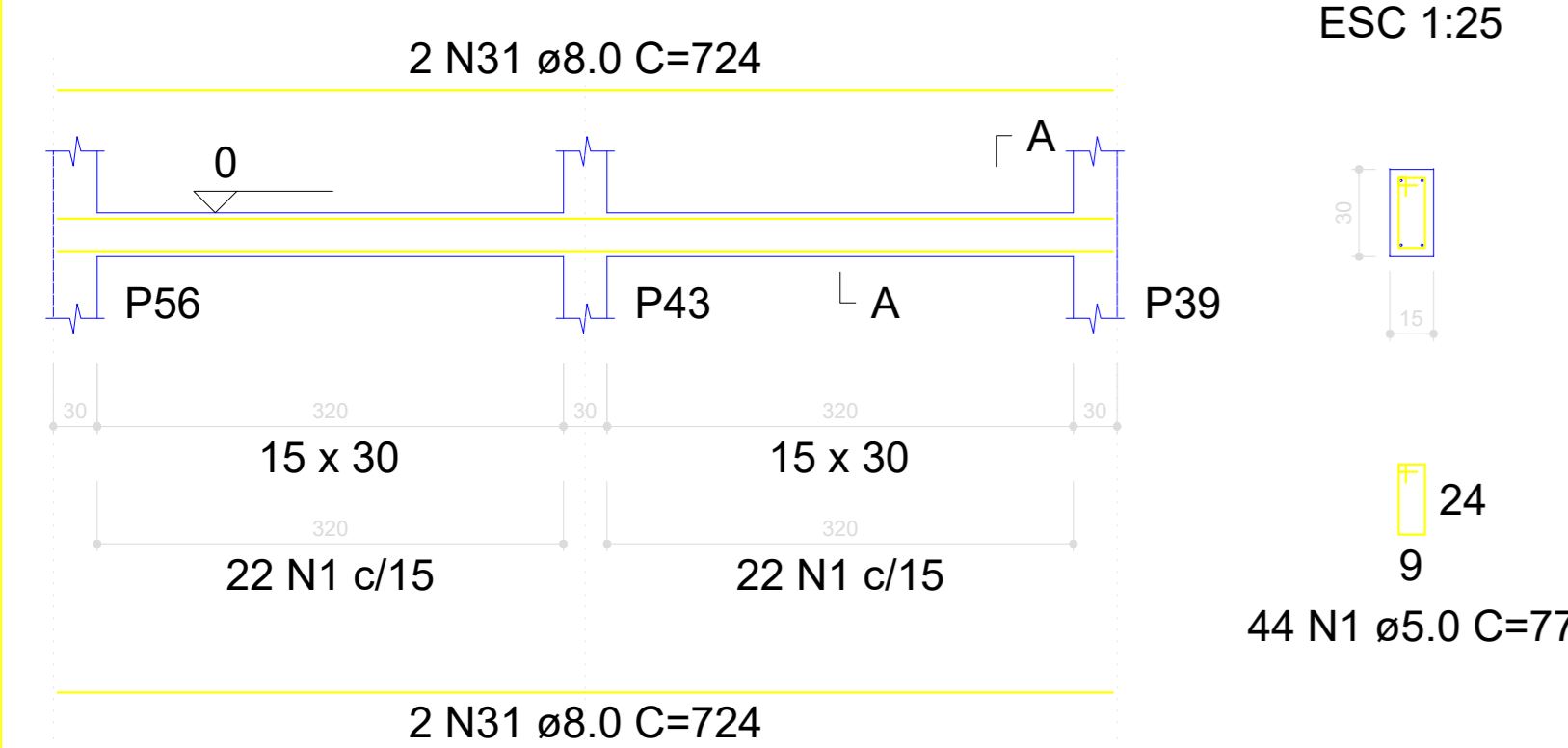
V30
ESC 1:50



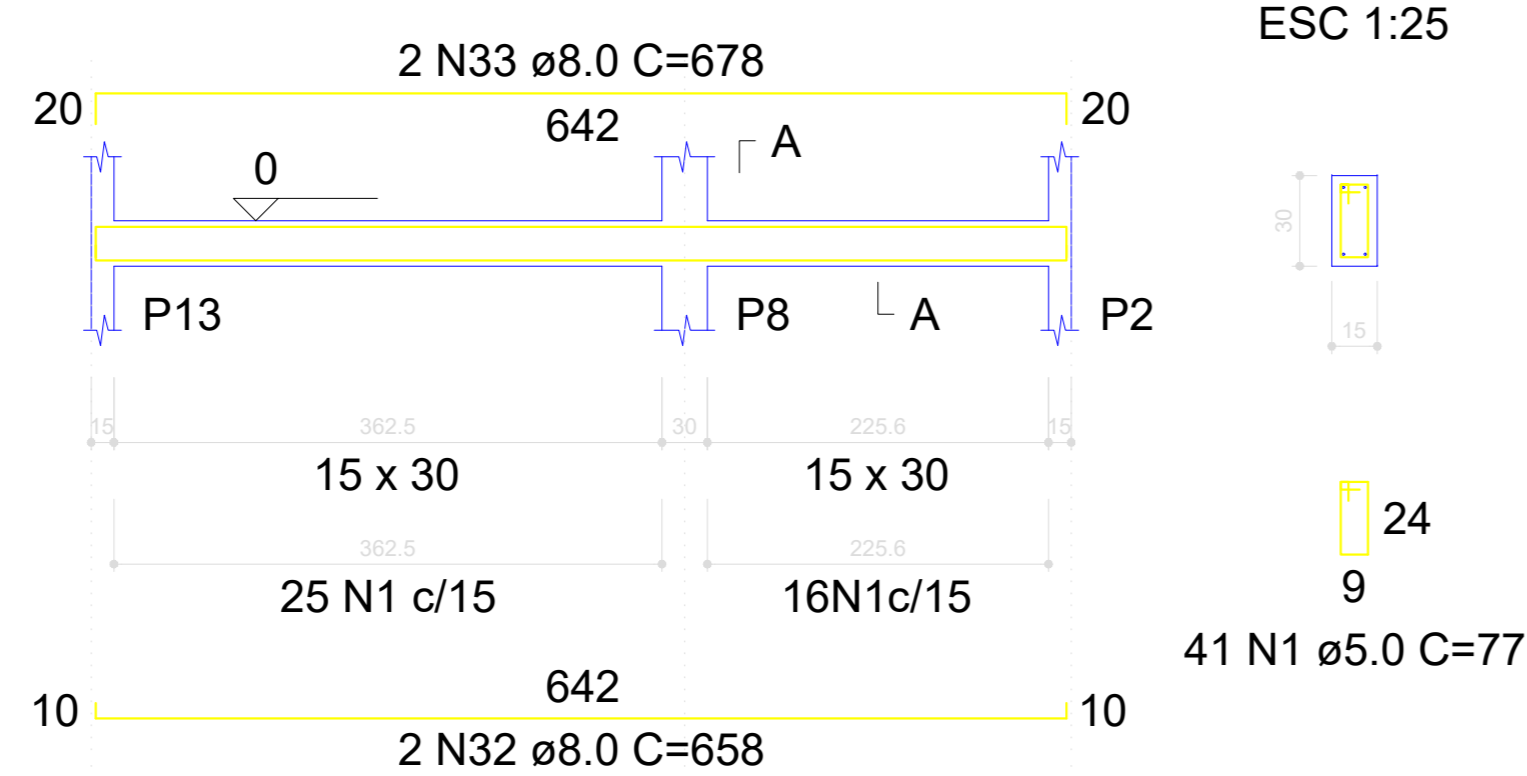
V31
ESC 1:50



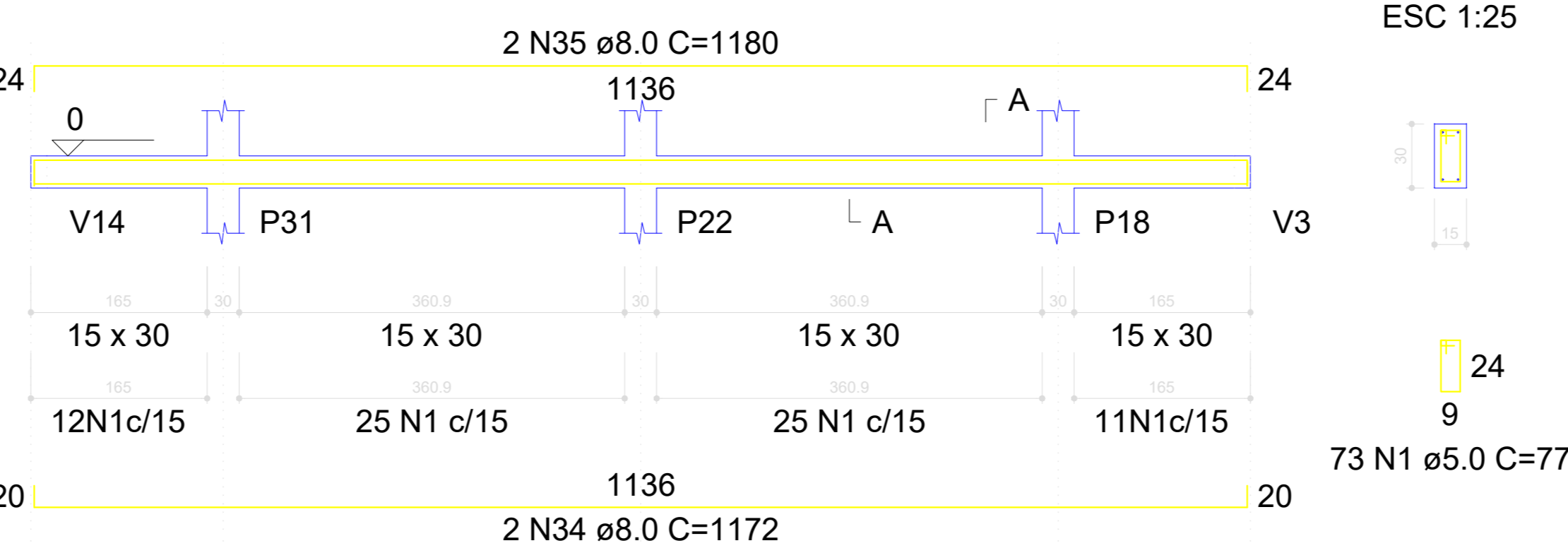
V32
ESC 1:50



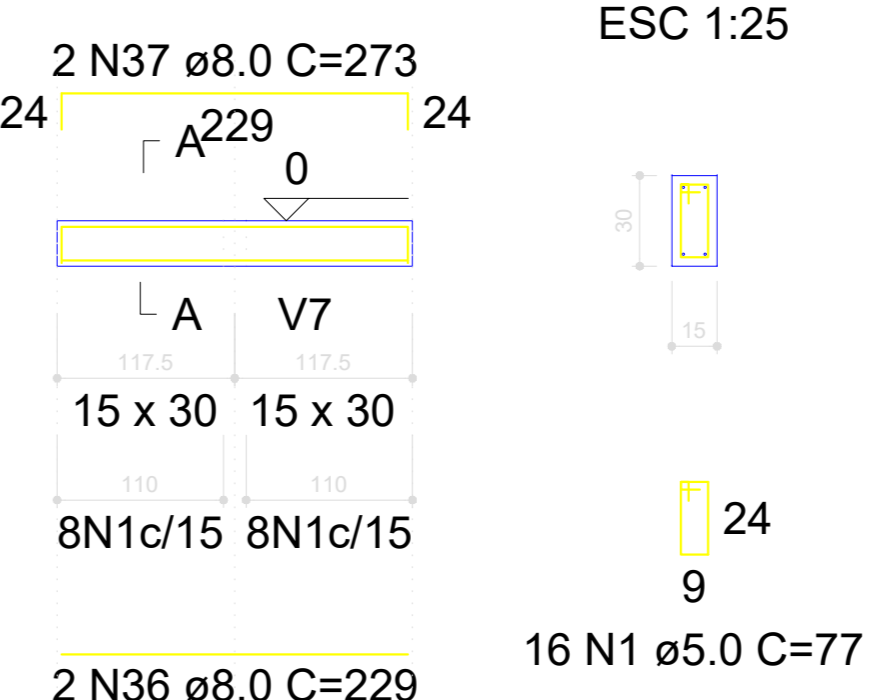
V33
ESC 1:50



V34
ESC 1:50



V35
ESC 1:50



RELAÇÃO DO AÇO

AÇO	N	DIAM (mm)	QUANT	C.UNIT (cm)	C.TOTAL (cm)
CA60	1	5.0	871	77	67067
	2	5.0	2	226	452
	3	5.0	2	243	486
CA50	4	8.0	2	1122	2244
	5	8.0	2	1150	2300
	6	8.0	2	1107	2214
	7	8.0	2	161	322
	8	8.0	2	1167	2334
	9	8.0	6	1200	7200
	10	8.0	2	1185	2370
	11	8.0	2	1065	2130
	12	8.0	2	1068	2136
	13	8.0	2	924	1848
	14	8.0	8	174	1392
	15	8.0	2	938	1876
	16	8.0	2	611	1222
	17	8.0	2	1103	2206
	18	8.0	2	208	416
	19	8.0	2	172	344
	20	8.0	2	186	372
	21	8.0	2	295	590
	22	8.0	2	315	630
	23	8.0	4	716	2864
	24	8.0	2	740	1480
	25	8.0	2	1197	2394
	26	8.0	2	668	1336
	27	8.0	2	920	1840
	28	8.0	2	183	366
	29	8.0	2	257	514
	30	8.0	2	293	586
	31	8.0	4	724	2896
	32	8.0	2	658	1316
	33	8.0	2	678	1356
	34	8.0	2	1172	2344
	35	8.0	2	1180	2360
	36	8.0	2	229	458
	37	8.0	2	273	546

RESUMO DO AÇO

AÇO	DIAM (mm)	C.TOTAL (m)	PESO + 10% (kg)
CA50	8.0	568	246.5
CA60	5.0	680.1	115.3
PESO TOTAL (kg)			
CA50			246.5
CA60			115.3

Volume de concreto (C-25) = 6.33 m³
Área de forma = 105.46 m²

PROJETO:
ESCOLA EDEVAL SUZART COUTINHO

TÍTULO:
PROJETO ESTRUTURAL

ENDEREÇO:
ZONA URBANA

MUNICÍPIO:
IBIRAPITANGA - BA

RESPONSÁVEL TÉCNICO:
ADEBALDO RODRIGUES DOS SANTOS
ENG. CIVIL CREA 18429/D

ARQUIVO:
ESC. INDICADA DATA: JULHO/2022

OBJETO:
BALDRAME

PRANCHIA:
EST08