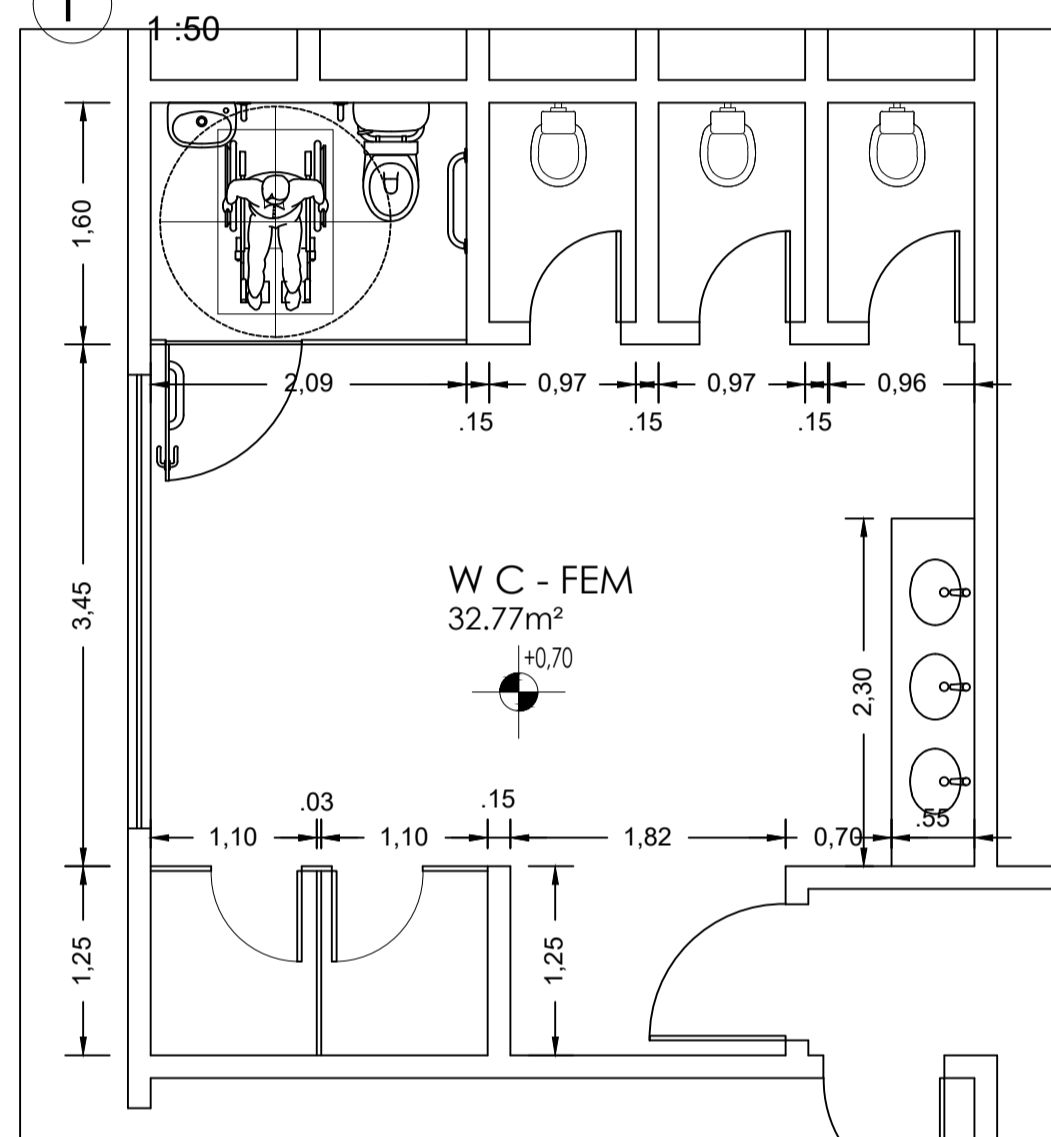
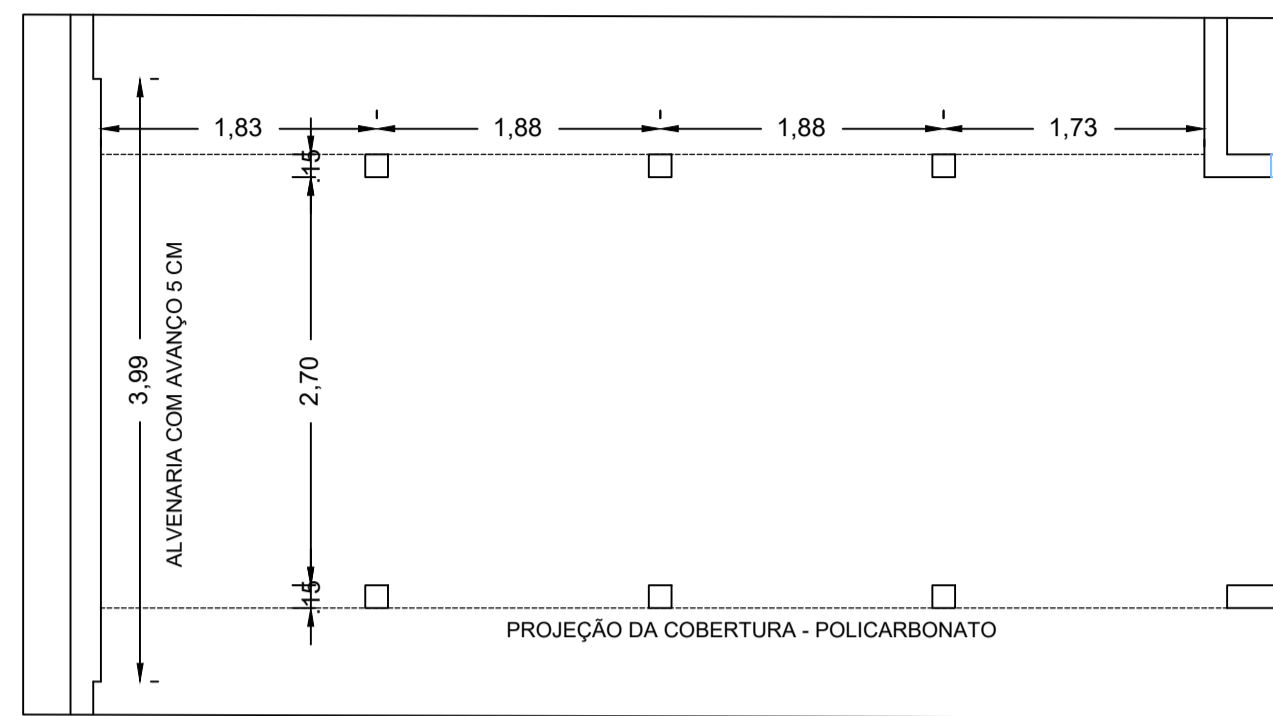


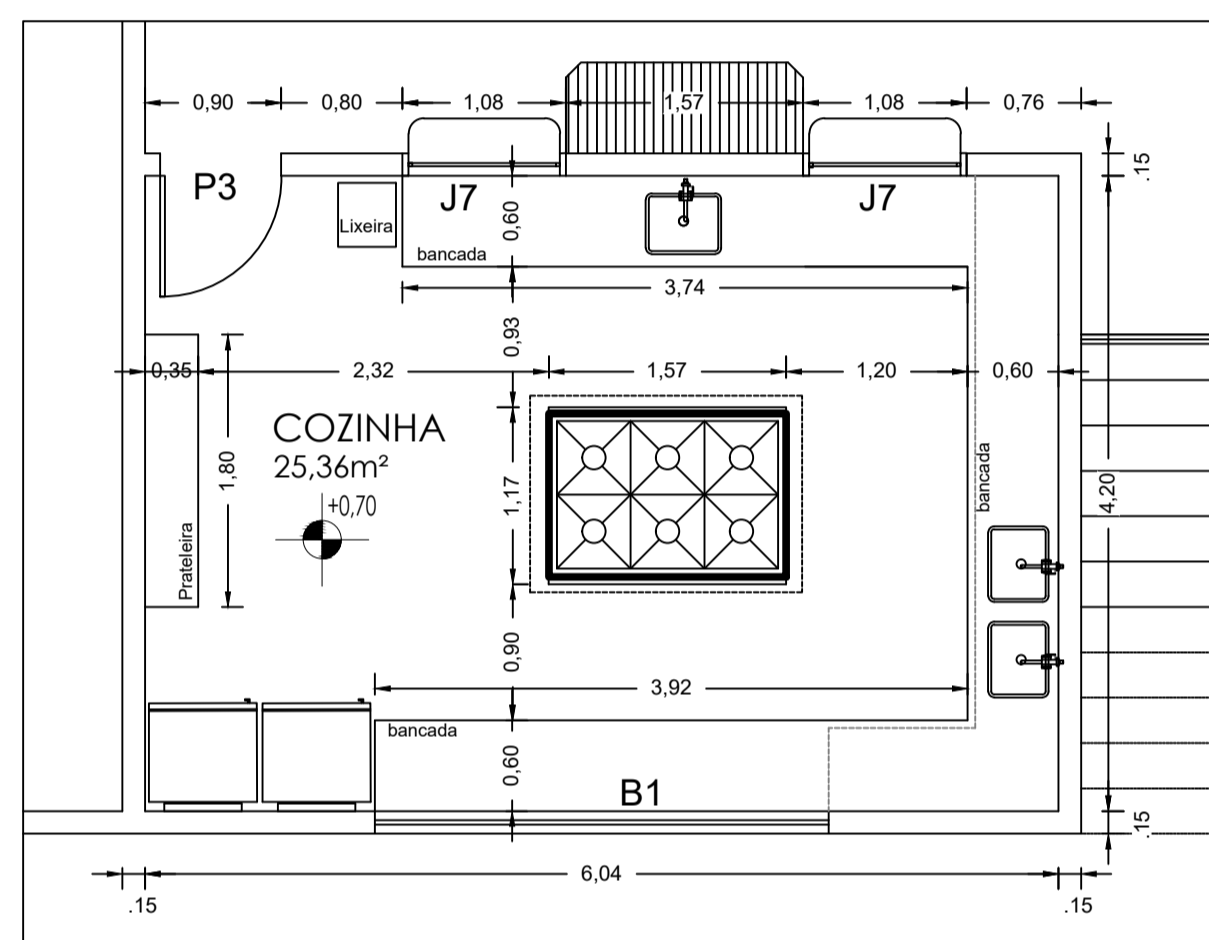
1 PL. BAIXA - WC - MASC.



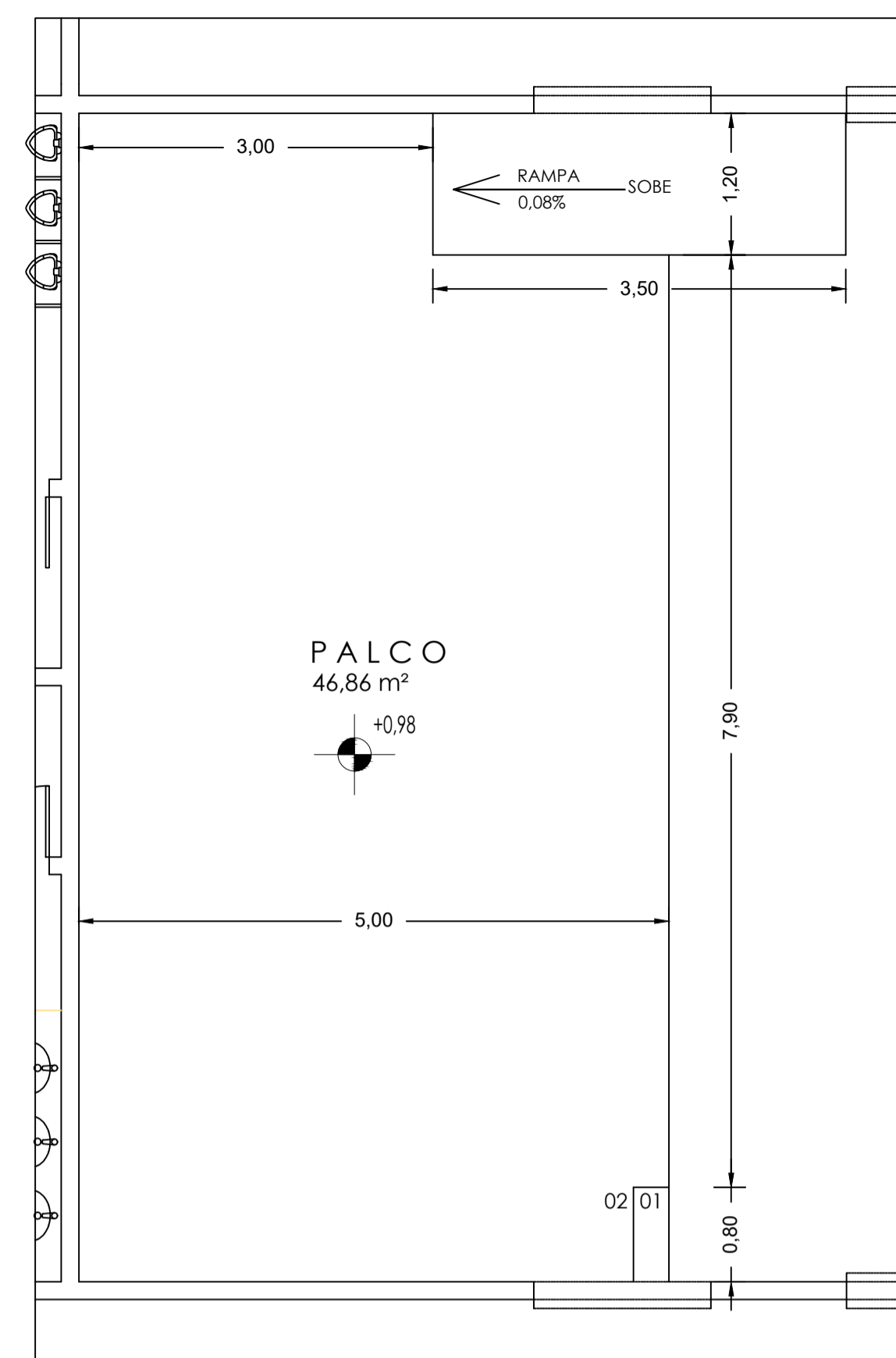
2 PL. BAIXA - WC - FEM.



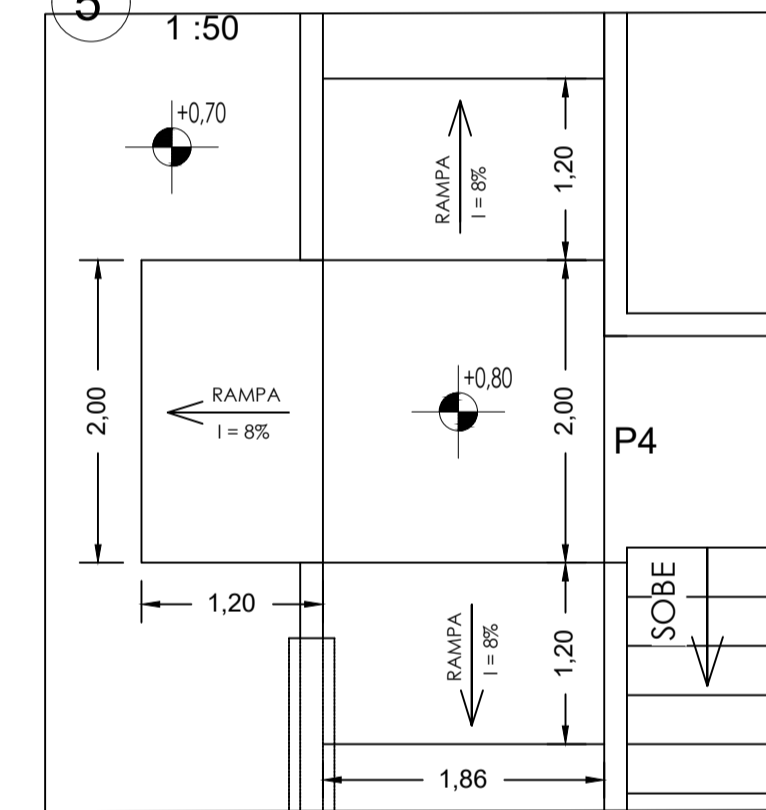
3 PL. BAIXA - COBERTURA/ ENTRADA



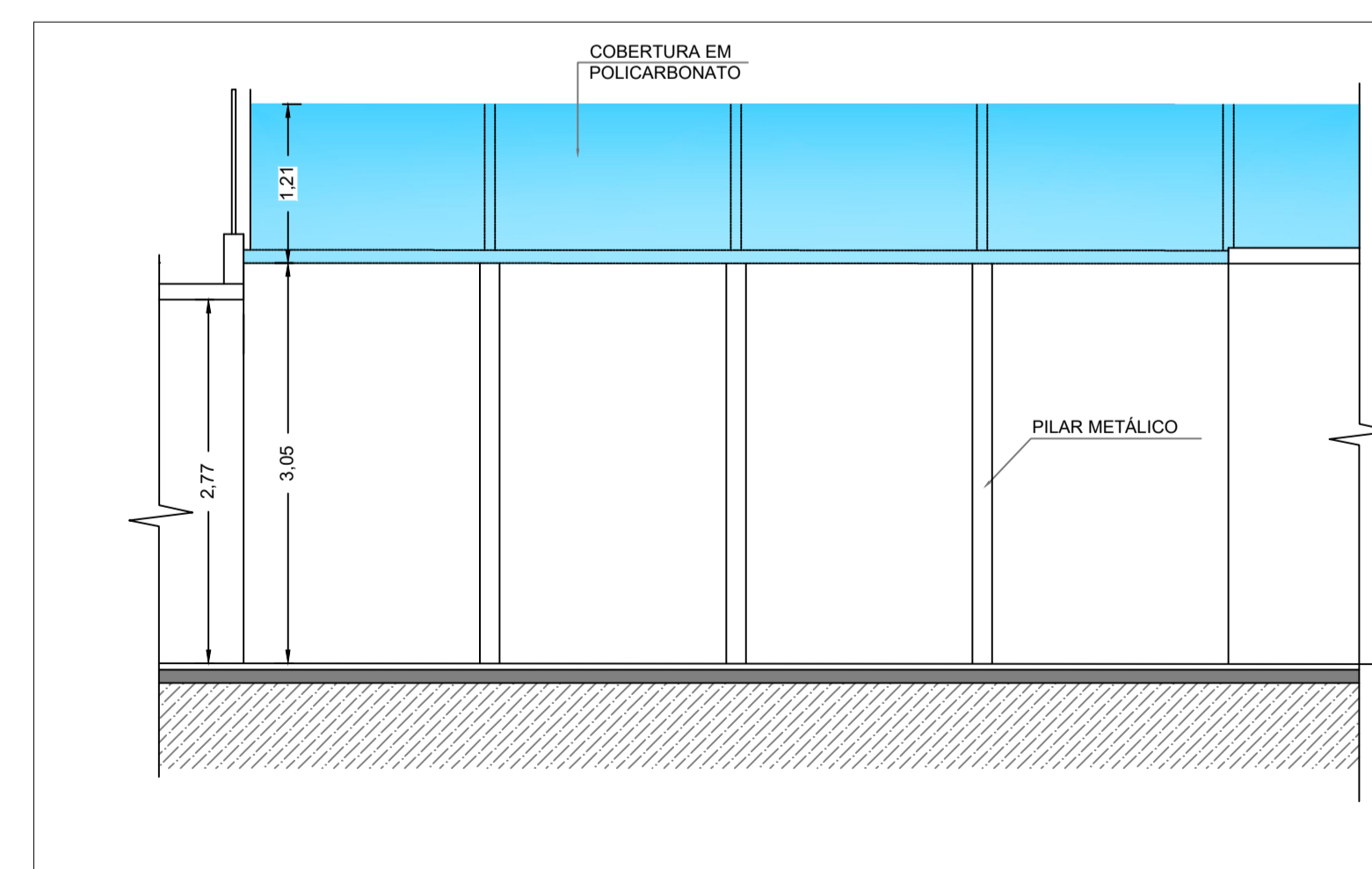
4 PL. BAIXA - COZINHA



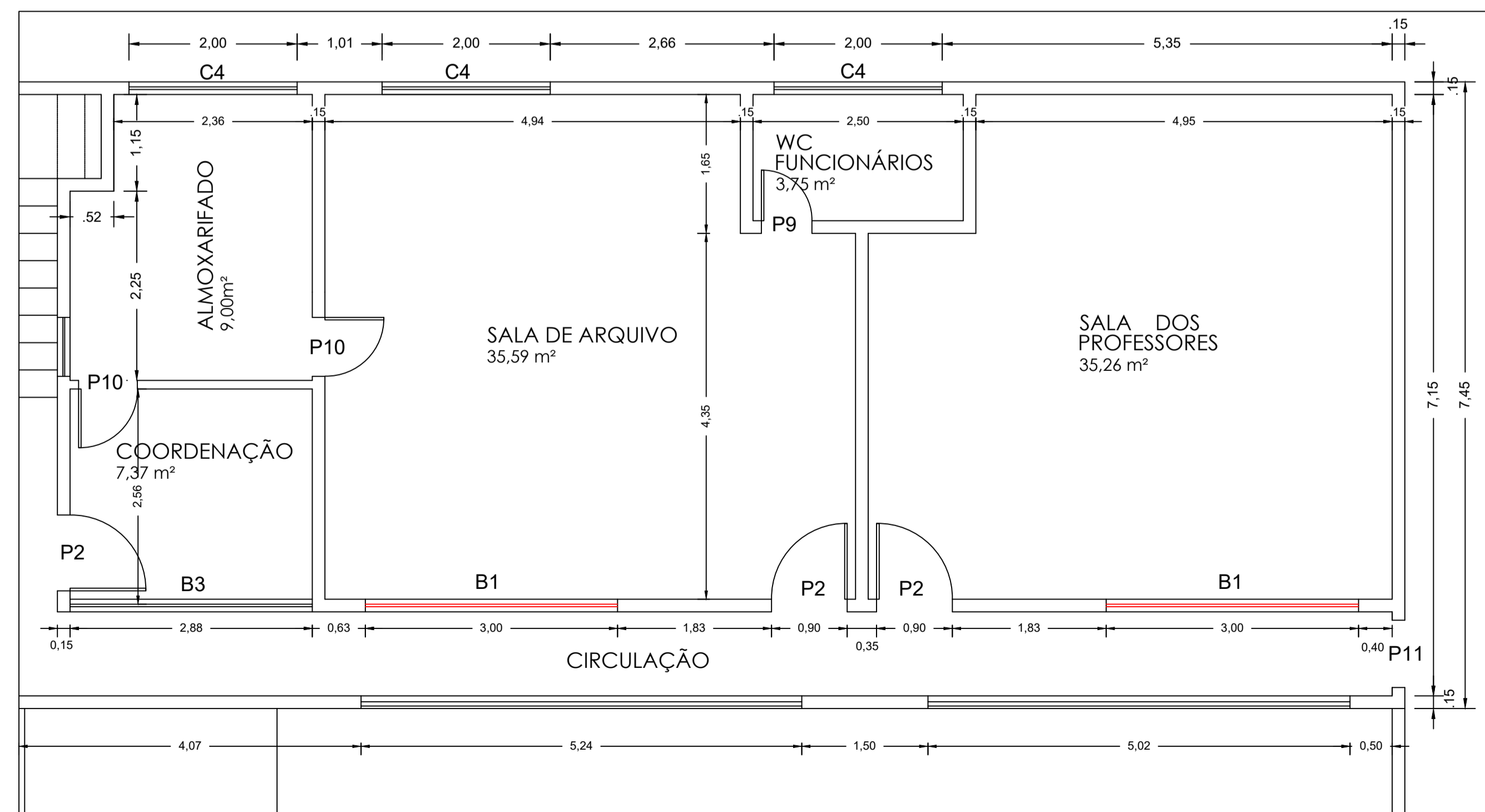
5 PL. BAIXA - PALCO



6 PL. BAIXA - RAMPA



8 VISTA - COBERTURA/ ENTRADA



7 PL. BX. Pav. SUPERIOR

PROJETO: ESCOLA - REFORMA E AMPLIAÇÃO			
TÍTULO: PROJETO ARQUITETÔNICO			
ENDEREÇO: RUA NELSON DAVID RIBEIRO	OBJETO: PL. BAIXA - WC, COZINHA, PALCO, COBERTURA, ENTRADA E RAMPA		
MUNICÍPIO: IBIRAPITANGA - BA	RESPONSÁVEL TÉCNICO: ADEBALDO RODRIGUES DOS SANTOS ENG. CIVIL CREA: 18459/D		
ARQUIVO:	ESC: 1/50	DATA: ABRIL/2022	PRANCHA: ARQ3